

# Brackets

**BRACKETS** -- Mounting brackets (also called knee, angle or L-brackets) can be flush to the wall or constructed to account for a projection from the wall. They are typically used when there are obstructions to clear. For proper size brackets measure standoff distance from wall to back of where air curtain will be.



**Standard strut brackets for commercial models**

Standard strut brackets can be constructed for installing the air curtain flush to the surface, or with a standoff distance (distance from the surface to the back of the air curtain).



**Angle iron brackets for industrial models**

Brackets are constructed of angle iron for larger, heavier air curtain models in the industrial lines.

**\* Threaded rod is by others**



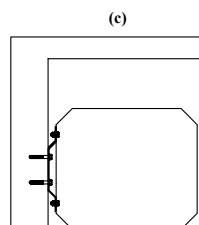
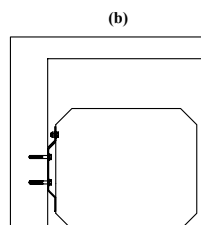
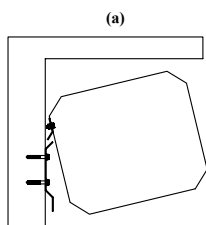
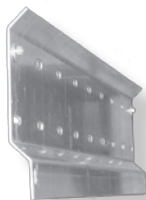
**Welded steel brackets for large industrial models**

Custom welded steel tube brackets are used with Powered Aire's extremely large industrial models, or large offset distances.



## Optional Strut

When there are obstacles to go around, such as sectional door tracks, two pieces of strut can be attached to the top of the air curtain. By making the strut longer at each end they will extend past the tracks to reach the brackets.



## MB123 quick mounting plate

The MB 123 consists of a plate with a universal hole pattern that is attached to the wall and a bar that is attached to the air curtain. The back side of our commercial air curtains have four standard mounting holes. The MB123 can be used when the holes do not line up with wall studs or other structural supports. With this mounting option, the weight of the unit does not have to be supported while the lags are being installed.