



CHS-HW



CHS-ST

# CHS-HW/ST



CHS-HW/ST (hot water or steam) heated air curtains are designed for high traffic retail facilities where employee and customer comfort are critical. The CHS effectively blocks cold outdoor air from entering while providing a heated barrier that helps keep the area by the door warm and free of outside drafts. The CHS-HW/ST model has a gentle airflow and its unique plenum design make it one of the quietest air curtains in the industry.

**When requesting a quote for a Hot Water/Steam heated air curtain, please provide:**

- Specifics of water/steam entering and exiting the air curtain.
- Location for water/steam supplies and returns (both on one side or one each side)

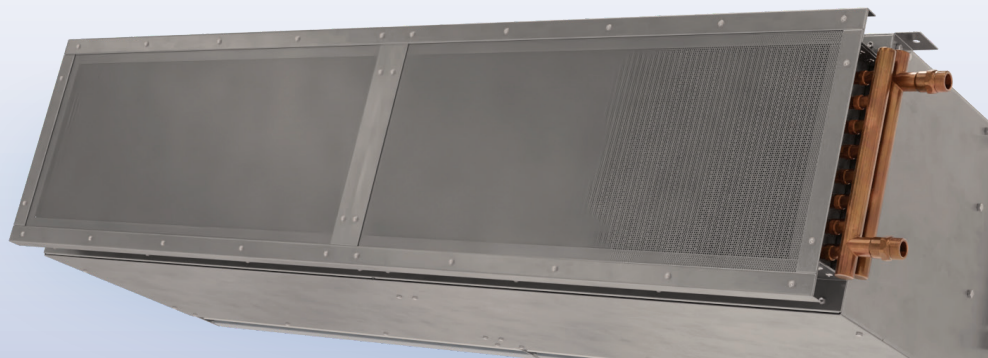
## OPTIONS

**HEATING**

- Hot Water .....CHS-HW
- Steam .....CHS-ST

**FILTER**

- 1" Cleanable



## AT A GLANCE

Single Incremental Widths

3' to 12'

Max Installation Height

11'

Heavy Duty Motors

1/2 HP

**KEY DESIGN FEATURES**

- Outer cabinet constructed of 18-gauge 304 stainless steel with #3 finish
- 1/2 HP ODP (Open Drip Proof) direct-drive dual-speed motor(s)
- High-efficiency discharge plenum with adjustable air foil vane (+/-20°)
- Top and bottom access panels for servicing and removal of motor-blower assembly
- NEMA 12 control panel
- Coil made to AHRI Standard 410
- Hot water coil comprised of galvanized steel casing, 5/8" copper tube, aluminum fins, and same end supply/return connections
- Leak tested at 450 psi
- Single length hot water coils up to 14 ft
- Single length steam coils up to 10 ft
- Custom coil selections available (consult factory)

**RECOMMENDED CONTROLS & ACCESSORIES**

- Activation by 24V magnetic door switch
- Toggle disconnect switch
- SmartTouch controller
- Hot water or steam control valve with actuator
- Filter (washable)

