



# TSD



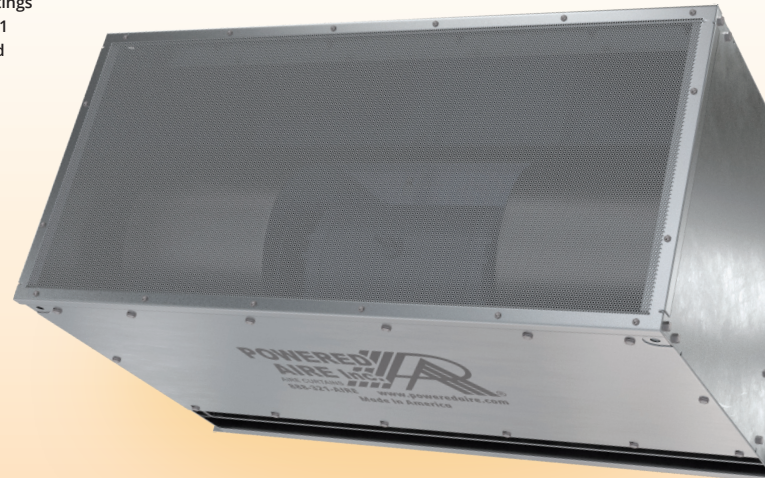
The TSD is typically used over dock doors, ground level doors or large openings in an industrial environment. All industrial units are direct drive, which avoids misalignment of couplers and outboard bearings and eliminates periodic belt replacement.

Powered Aire, Inc. certifies model TSD shown herein is licensed to bear the AMCA Seal. The ratings shown are based on tests and procedures performed in accordance with AMCA Publication 211 and comply with the requirements of the AMCA Certified Ratings Program. The AMCA Certified Ratings Seal applies to airflow rate, average outlet velocity, outlet velocity uniformity, velocity projection and power rating at free delivery only. (May 2016)

## OPTIONS

### HEATING

Electric. . . . .	pg 157
Hot Water. . . . .	pg 163
Steam . . . . .	pg 163
Indirect Gas. . . . .	pg 167
Direct Gas. . . . .	pg 173



## AT A GLANCE

Single Incremental Widths

4' to 30'

Max Installation Height

17'

Heavy Duty Motors

3 HP

### KEY DESIGN FEATURES

- AMCA tested performance
- Outer cabinet constructed of 18-gauge 304 stainless steel with #3 finish
- 3 HP TEAO (Totally Enclosed Air Over) direct-drive single-speed motor(s)
- High-efficiency discharge plenum with adjustable air foil vane (+/-20°)
- Top and bottom access panels for servicing and removal of motor-blower assembly
- NEMA 12 control panel with factory installed magnetic motor starter, overload relays, and control transformer

### RECOMMENDED CONTROLS

- Activation by 24V magnetic door switch
- Toggle disconnect switch
- Hand/Off/Auto selector switch

