

► BPA | PERFORMANCE

BPA | Performance Table

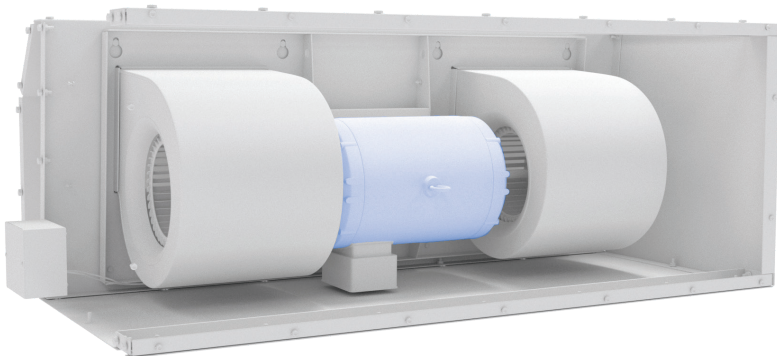
MODEL	Door Width (ft.)	Nozzle Width (in.)	Max. FPM at Nozzle	Max. CFM at Nozzle	Avg. FPM at Nozzle	CFM at Nozzle	Outlet Velocity Uniformity	Number of Motors	Motor HP	Weight (lbs)
BPA-1-60	5	60	5950	12901	3975	9724	94%	1	7.5	466
BPA-1-72	6	72	5950	16710	4296	12030	94%	1	7.5	490
BPA-1-84	7	84	5950	17500	3995	13050	92%	1	7.5	530
BPA-2-120	10	120	5950	25802	4388	20475	94%	2	7.5	903
BPA-2-132	11	132	5950	27678	4082	20956	95%	2	7.5	930
BPA-2-144	12	144	5950	31058	4449	24915	95%	2	7.5	950
BPA-2-156	13	156	5950	33605	4341	26335	92%	2	7.5	998
BPA-2-168	14	168	5950	36155	4541	29670	92%	2	7.5	1035
BPA-3-180	15	180	5950	38703	4272	29905	94%	3	7.5	1343
BPA-3-192	16	192	5950	39435	4063	30335	95%	3	7.5	1360
BPA-3-204	17	204	5950	40448	3834	30420	94%	3	7.5	1372
BPA-3-216	18	216	5950	41405	3803	31948	95%	3	7.5	1407
BPA-3-228	19	228	5950	49055	4153	36827	94%	3	7.5	1460
BPA-3-240	20	240	5950	51604	4056	37856	92%	3	7.5	1505
BPA-4-240	20	240	5950	55067	4309	40217	95%	4	7.5	1800

BPA | Sound Levels

High Speed 73 dBA Measured 10 ft. from unit in a free field based on a 1 motor unit

BPA | Three Phase Motor Options

Voltages available	208	240	480	575
Amp draw per motor	26.8	23.2	11.6	9.7



Performance Highlight

Totally enclosed, air over (TEAO) motors are constructed with a dust-tight cover and an aerodynamic body. They are efficient at running and are cooled by the air flow of the blower which it is driving.