

## ► CAC | PERFORMANCE

### Cooler Aire Curtain™ | Performance Table

MODEL	Nozzle Width (in.)	Max. FPM at Nozzle	Avg. FPM	Max. CFM	CFM at Nozzle	Outlet Velocity Uniformity	Number of Motors	Motor HP	Weight (lbs)
CAC-1-36	36	H 4218 L 2837	H 3695 L 2487	H 2899 L 1950	H 2541 L 1710	95%	1	3/4	90
CAC-1-42	42	H 4218 L 2837	H 3169 L 2133	H 3384 L 2276	H 2532 L 1696	93%	1	3/4	97
CAC-1-48	48	H 4218 L 2837	H 2771 L 1865	H 3867 L 2601	H 2559 L 1721	92%	1	3/4	104
CAC-1-60	60	H 4218 L 2837	H 2218 L 1493	H 4374 L 2792	H 2528 L 1703	91%	1	3/4	117
CAC-2-60	60	H 4218 L 2837	H 3315 L 2231	H 5050 L 3252	H 3812 L 2565	94%	2	3/4	147
CAC-2-72	72	H 4218 L 2837	H 3696 L 2488	H 5803 L 3903	H 5082 L 3420	95%	2	3/4	169
CAC-2-84	84	H 4218 L 2837	H 3169 L 2133	H 6766 L 4551	H 5063 L 3382	93%	2	3/4	187
CAC-2-96	96	H 4218 L 2837	H 2773 L 1866	H 7732 L 5201	H 5081 L 3417	92%	2	3/4	203
CAC-3-108	108	H 4218 L 2837	H 3702 L 2486	H 8702 L 5853	H 7623 L 5130	95%	3	3/4	245
CAC-3-120	118	H 4218 L 2837	H 3174 L 2134	H 9668 L 6503	H 7614 L 5127	94%	3	3/4	274
CAC-3-132	133	H 4218 L 2837	H 2792 L 1885	H 10853 L 7155	H 7589 L 5104	94%	3	3/4	290
CAC-4-144	145	H 4218 L 2837	H 3696 L 2488	H 11606 L 7806	H 10164 L 6840	95%	4	3/4	338

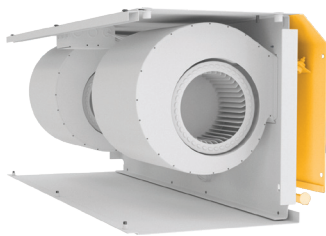
**!** For a unit over 12 feet long, consult factory.

### CAC | Sound Levels

<b>High Speed</b>	63 dBA	<b>Low Speed</b>	56 dBA	Measured 10 ft. from unit in a free field based on a 1 motor unit
-------------------	--------	------------------	--------	---

### CAC | Single Phase Motor Options

<b>Voltages available</b>	120	208 / 230	480	575	For three phase motors, consult factory
<b>Amp draw per motor</b>	8.0	3.6	2.0	1.5	



### Performance Highlight

The model CAC positions the blowers pointing toward the back of the air curtain. Here they fill a specially designed plenum that when pressurized creates a true curtain of air without gaps. Additionally, it is more efficient and lowers the operational sound level.