

► CED | PERFORMANCE

CED | Performance Table

MODEL	Nozzle Width (in.)	Max. FPM at Nozzle	Avg. Outlet Velocity (FPM)	Airflow Rate (CFM)	Outlet Velocity Uniformity	Power Rating (kW)	Number of Motors	Motor HP	Weight (lbs)
CED-1-36	36	5560	1205	892	88%	0.25	1	1/2	83
CED-1-42	42	5305	1209	1040	90%	0.28	1	1/2	90
CED-1-48	48	4628	1131	1108	89%	0.28	1	1/2	97
CED-1-60	60	5096	998	1227	79%	0.29	1	1/2	111
CED-2-72	72	5560	1205	1784	88%	0.50	2	1/2	162
CED-2-84	84	5305	1209	2080	90%	0.56	2	1/2	182
CED-2-96	96	4628	1131	2216	89%	0.56	2	1/2	196
CED-3-108	108	5560	1205	2676	88%	0.75	3	1/2	239
CED-3-120	118	5028	1176	2892	88%	0.78	3	1/2	267
CED-3-132	133	4996	1111	3011	79%	0.79	3	1/2	276
CED-4-144	145	5560	1205	3568	88%	1.00	4	1/2	324
CED-4-156	157	5300	1208	3864	88%	1.06	4	1/2	342
CED-4-168	169	5305	1209	4160	90%	1.12	4	1/2	360



For a unit over 14 feet long, consult factory.

CED | Velocity Projection

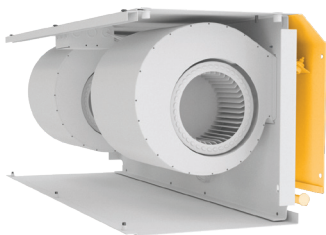
Distance From Nozzle	40"	80"	120"	160"
CED-1-36 Core Velocity (fpm)	996	746	636	574

CED | Sound Levels

Measured 10 ft. from unit in a free field based on a 1 motor unit 53 dBA

CED | Single Phase Motor Options

Voltages available	120	208/230	480	Note: 575v is transformed down to 120v
Amp draw per motor	2.5	1.4	0.7	



Performance Highlight

Perfect for customer facing spaces in retail environments, the model CED positions the blowers pointing toward the back of the air curtain. Here they fill a specially designed plenum that when pressurized is more efficient and lowers the operational sound level.

The AMCA Certified Ratings Seal applies to airflow rate, average outlet velocity, outlet velocity uniformity, velocity projection and power rating at free delivery only.

Powered Aire Inc. certifies that the Model CED Air Curtain shown herein is licensed to bear the AMCA Seal for Air Performance. The ratings shown are based on tests and procedures performed in accordance with AMCA Publication 211 and comply with the requirements of the AMCA Certified Ratings Program.



May 2020
PAAC-501