

▶ CHA-E | PERFORMANCE

CHA-E | Performance Table

MODEL	Nozzle Width (in.)	Average Outlet Velocity (FPM)	Air Flow Rate (CFM)	Outlet Velocity Uniformity	Power Rating (kW)	Number of Motors	Motor HP	Heater kW	Temp. Rise (°F)	Weight (lbs)
CHA-1-36E	36	2443	1197	86%	0.59	1	3/4	10	26.7	182
CHA-1-48E	48	2338	1543	79%	0.7	1	3/4	10	20.7	204
CHA-1-60E	60	1923	1596	82%	0.73	1	3/4	10	20	230
CHA-2-72E	72	2443	2394	86%	1.18	2	3/4	20	26.7	364
CHA-2-84E	84	2383	2740	79%	1.29	2	3/4	20	23.3	382
CHA-2-96E	96	2338	3086	79%	1.4	2	3/4	20	20.7	397
CHA-2-108E	108	2107	3139	79%	1.43	3	3/4	20	20.3	417
CHA-3-108E	108	2443	3591	86%	1.77	3	3/4	30	26.7	546
CHA-3-120E	120	2401	3937	79%	1.88	3	3/4	30	24.3	570
CHA-3-132E	132	2367	4283	79%	1.99	3	3/4	30	22.4	584
CHA-4-144E	144	2443	4788	86%	2.36	4	3/4	40	26.7	728

! For a unit over 12 feet long, or a non-standard electric heater, consult factory.

CHA-E | Velocity Projection Model

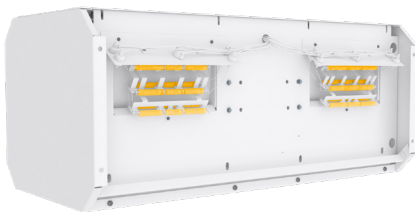
DISTANCE FROM NOZZLE	40"	80"	120"
CHA-1-36-E Core Velocity (fpm)	1044	833	711

CHA-E | Sound Levels

Normal speed 63 dBA Measured 10 ft. from unit in a free field based on a 1 motor unit

CHA-E | Single Phase Motor Options

Voltages available	120	208/230	480	575	For dual speed motors, consult factory. For three phase motors, consult factory
Amp draw per motor	8.0	3.6	2.0	1.5	



Performance Highlight

Heating elements are mounted inside the plenum, on the discharge side of the blowers. Here, heat won't affect motor life and the heaters are protected from dust that would accumulate on them if they were mounted on the air intake.

The AMCA Certified Ratings Seal applies to airflow rate, average outlet velocity, outlet velocity uniformity, velocity projection and power rating at free delivery only. Rated data shown are based on tests of units with heating elements present but not in use.

Powered Aire Inc. certifies that the Model CHA-E Air Curtain shown herein is licensed to bear the AMCA Seal for Air Performance. The ratings shown are based on tests and procedures performed in accordance with AMCA Publication 211 and comply with the requirements of the AMCA Certified Ratings Program.

May 2020
PAAC-205

