

## ► CHD & CHD-E | PERFORMANCE

CHD & CHD-E | Performance Table

MODEL	Nozzle Width (in.)	Max. FPM at Nozzle	Avg. FPM	Max. CFM	CFM at Nozzle	Outlet Velocity Uniformity	Number of Motors	Motor HP	Electric Heat		Weight (lbs) Un / Heated
									Heater kW	Temp. Rise (°F)	
CHD-1-36 (E)	36	H 4218 L 2837	H 3695 L 2487	H 2899 L 1950	H 2541 L 1710	95%	1	3/4	10	H 13 L 19	179 / 182
CHD-1-48 (E)	48	H 4218 L 2837	H 2771 L 1865	H 3867 L 2601	H 2559 L 1721	92%	1	3/4	10	H 13 L 19	195 / 204
CHD-1-60 (E)	60	H 4218 L 2837	H 2218 L 1493	H 4374 L 2792	H 2528 L 1703	91%	1	3/4	10	H 13 L 19	225 / 230
CHD-2-72 (E)	72	H 4218 L 2837	H 3696 L 2488	H 5803 L 3903	H 5082 L 3420	95%	2	3/4	20	H 13 L 19	358 / 364
CHD-2-84 (E)	84	H 4218 L 2837	H 3169 L 2133	H 6766 L 4551	H 5063 L 3382	93%	2	3/4	20	H 13 L 19	371 / 382
CHD-2-96 (E)	96	H 4218 L 2837	H 2773 L 1866	H 7732 L 5201	H 5081 L 3417	92%	2	3/4	20	H 13 L 19	384 / 397
CHD-2-108 (E)	108	H 4218 L 2837	H 2472 L 1661	H 8216 L 5520	H 5090 L 3421	95%	2	3/4	20	H 13 L 19	397 / 417
CHD-3-108 (E)	108	H 4218 L 2837	H 3702 L 2486	H 8702 L 5853	H 7623 L 5130	95%	3	3/4	30	H 13 L 19	537 / 546
CHD-3-120 (E)	120	H 4218 L 2837	H 3174 L 2134	H 9668 L 6503	H 7614 L 5127	94%	3	3/4	30	H 13 L 19	550 / 570
CHD-3-132 (E)	132	H 4218 L 2837	H 2792 L 1885	H 10853 L 7155	H 7589 L 5104	94%	3	3/4	30	H 13 L 19	563 / 584
CHD-4-144 (E)	144	H 4218 L 2837	H 3696 L 2488	H 11606 L 7806	H 10164 L 6840	95%	4	3/4	40	H 13 L 19	716 / 728

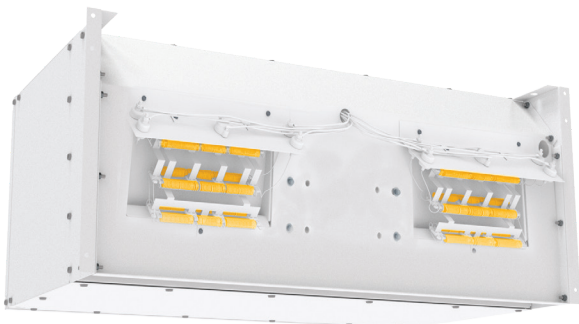
**!** For a unit over 12 feet long, or a non-standard electric heater kW, consult factory.

### CHD & CHD-E | Sound Levels

<b>High Speed</b>	63 dBA	<b>Low Speed</b>	56 dBA	Measured 10 ft. from unit in a free field based on a 1 motor unit
-------------------	--------	------------------	--------	---

### CHD & CHD-E | Single Phase Motor Options

<b>Voltages available</b>	120	208/230	480	575	For three phase motors, consult factory
<b>Amp draw per motor</b>	8.0	3.6	2.0	1.5	



### Performance Highlight

Heating elements are mounted inside the plenum, on the discharge side of the blowers, where heat can't affect motor life.