

► CHD & CHD-E | PERFORMANCE

CHD & CHD-E | Performance Table

| MODEL | Nozzle Width (in.) | Max. FPM at Nozzle | Avg. FPM | Max. CFM | CFM at Nozzle | Outlet Velocity Uniformity | Number of Motors | Motor HP | Electric Heat | | Weight (lbs) Un / Heated |
|---------------|--------------------|--------------------|------------------|-------------------|-------------------|----------------------------|------------------|----------|---------------|-----------------|--------------------------|
| | | | | | | | | | Heater kW | Temp. Rise (°F) | |
| CHD-1-36 (E) | 36 | H 4218 L 2837 | H 3695 L 2487 | H 2899 L 1950 | H 2541 L 1710 | 95% | 1 | 3/4 | 10 | H 13 L 19 | 179 / 182 |
| CHD-1-48 (E) | 48 | H 4218 L 2837 | H 2771 L 1865 | H 3867 L 2601 | H 2559 L 1721 | 92% | 1 | 3/4 | 10 | H 13 L 19 | 195 / 204 |
| CHD-1-60 (E) | 60 | H 4218 L 2837 | H 2218 L 1493 | H 4374 L 2792 | H 2528 L 1703 | 91% | 1 | 3/4 | 10 | H 13 L 19 | 225 / 230 |
| CHD-2-72 (E) | 72 | H 4218 L 2837 | H 3696 L 2488 | H 5803 L 3903 | H 5082 L 3420 | 95% | 2 | 3/4 | 20 | H 13 L 19 | 358 / 364 |
| CHD-2-84 (E) | 84 | H 4218 L 2837 | H 3169 L 2133 | H 6766 L 4551 | H 5063 L 3382 | 93% | 2 | 3/4 | 20 | H 13 L 19 | 371 / 382 |
| CHD-2-96 (E) | 96 | H 4218 L 2837 | H 2773 L 1866 | H 7732 L 5201 | H 5081 L 3417 | 92% | 2 | 3/4 | 20 | H 13 L 19 | 384 / 397 |
| CHD-2-108 (E) | 108 | H 4218 L 2837 | H 2472 L 1661 | H 8216 L 5520 | H 5090 L 3421 | 95% | 2 | 3/4 | 20 | H 13 L 19 | 397 / 417 |
| CHD-3-108 (E) | 108 | H 4218 L 2837 | H 3702 L 2486 | H 8702 L 5853 | H 7623 L 5130 | 95% | 3 | 3/4 | 30 | H 13 L 19 | 537 / 546 |
| CHD-3-120 (E) | 120 | H 4218 L 2837 | H 3174 L 2134 | H 9668 L 6503 | H 7614 L 5127 | 94% | 3 | 3/4 | 30 | H 13 L 19 | 550 / 570 |
| CHD-3-132 (E) | 132 | H 4218 L 2837 | H 2792 L 1885 | H 10853 L 7155 | H 7589 L 5104 | 94% | 3 | 3/4 | 30 | H 13 L 19 | 563 / 584 |
| CHD-4-144 (E) | 144 | H 4218 L 2837 | H 3696 L 2488 | H 11606 L 7806 | H 10164 L 6840 | 95% | 4 | 3/4 | 40 | H 13 L 19 | 716 / 728 |

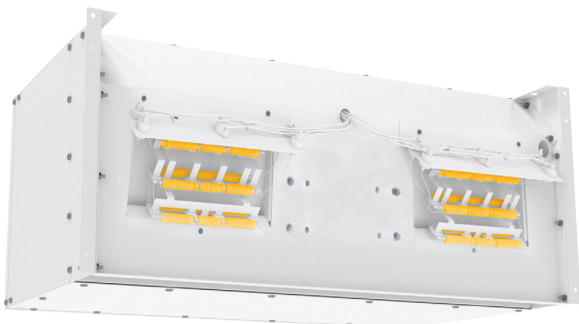
! For a unit over 12 feet long, or a non-standard electric heater kW, consult factory.

CHD & CHD-E | Sound Levels

| | | | | |
|-------------------|--------|------------------|--------|---|
| High Speed | 63 dBA | Low Speed | 56 dBA | Measured 10 ft. from unit in a free field based on a 1 motor unit |
|-------------------|--------|------------------|--------|---|

CHD & CHD-E | Single Phase Motor Options

| | | | | | |
|---------------------------|-----|---------|-----|-----|---|
| Voltages available | 120 | 208/230 | 480 | 575 | For three phase motors, consult factory |
| Amp draw per motor | 8.0 | 3.6 | 2.0 | 1.5 | |



Performance Highlight

Heating elements are mounted inside the plenum, on the discharge side of the blowers, where heat can't affect motor life.