

► CHS-HW/ST | PERFORMANCE

CHS-HW/ST | Performance Table

MODEL	Nozzle Width (in.)	Max. FPM at Nozzle	Avg. FPM	Max. CFM	CFM at Nozzle	Outlet Velocity Uniformity	Number of Motors	Motor HP	Hot Water		Steam		Weight (lbs)
									mbtu / Hour	Temp. Rise (°F)	mbtu / Hour	Temp. Rise (°F)	
CHS-1-36HW/ST	36	H 1904 L 1748	H 1570 L 1408	H 1309 L 1202	H 1005 L 961	95%	1	1/2	45	H 38 L 43	59	H 50 L 56	123
CHS-1-48HW/ST	48	H 1904 L 1748	H 1178 L 1056	H 1745 L 1603	H 1094 L 983	92%	1	1/2	47	H 40 L 45	60	H 51 L 57	134
CHS-1-60HW/ST	60	H 1904 L 1748	H 942 L 845	H 1790 L 1650	H 1084 L 977	91%	1	1/2	45	H 38 L 43	60	H 51 L 57	170
CHS-2-72HW/ST	72	H 1904 L 1748	H 1570 L 1408	H 2618 L 2404	H 2159 L 1936	95%	2	1/2	82	H 35 L 39	104	H 44 L 49	240
CHS-2-84HW/ST	84	H 1904 L 1748	H 1346 L 1207	H 3054 L 2804	H 2093 L 1896	93%	2	1/2	87	H 37 L 41	111	H 47 L 53	271
CHS-2-96HW/ST	96	H 1904 L 1748	H 1178 L 1056	H 3490 L 3204	H 2170 L 1942	92%	2	1/2	87	H 37 L 41	108	H 46 L 51	295
CHS-2-108HW/ST	108	H 1904 L 1748	H 1058 L 945	H 3710 L 3403	H 2182 L 1949	95%	2	1/2	85	H 36 L 40	104	H 44 L 49	318
CHS-3-108HW/ST	108	H 1904 L 1748	H 1570 L 1408	H 3928 L 3606	H 3239 L 2905	92%	3	1/2	127	H 36 L 40	155	H 44 L 49	355
CHS-3-120HW/ST	120	H 1904 L 1748	H 1421 L 1274	H 4364 L 4006	H 3230 L 2900	95%	3	1/2	131	H 37 L 41	162	H 46 L 51	396
CHS-3-132HW/ST	132	H 1904 L 1748	H 1178 L 1056	H 4950 L 4658	H 3247 L 2912	95%	3	1/2	138	H 39 L 44	162	H 46 L 51	459
CHS-4-144HW/ST	144	H 1904 L 1748	H 1570 L 1408	H 5236 L 4808	H 4318 L 3872	95%	4	1/2	174	H 37 L 41	107	H 44 L 49	480

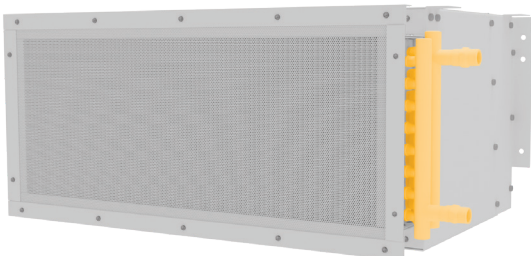
! For a unit over 12 feet long, or a non-standard electric heater kW, consult factory.

CHS-HW/ST | Sound Levels

High Speed	53 dBA	Low Speed	51 dBA	Measured 10 ft. from unit in a free field based on a 1 motor unit
-------------------	--------	------------------	--------	---

CHS-HW/ST | Single Phase Motor Options

Voltages available	120	208/230	480	Note: 575v is transformed down to 120v
Amp draw per motor	2.5	1.4	0.7	



Performance Highlight

Made-to-order steam or hot water coil mounted to intake of air curtain. Coil consists of 5/8 in. O.D. copper tubes and aluminum fins. Coils certified to ARI standard 410.