

► CLD & CLD-E | PERFORMANCE

CLD & CLD-E | Performance Table

MODEL	Nozzle Width (in.)	Max. FPM at Nozzle	Avg. FPM	CFM at Nozzle	Outlet Velocity Uniformity	Number of Motors	Motor HP	Electric Heat		Weight (lbs) Un / Heated
								Heater kW	Temp. Rise (°F)	
CLD-1-36 (E)	36	5560	1205	892	88%	1	1/2	10	36	171 / 174
CLD-1-48 (E)	48	4628	1131	1108	89%	1	1/2	10	29	189 / 196
CLD-1-60 (E)	60	5096	998	1227	79%	1	1/2	10	26	220 / 224
CLD-2-72 (E)	72	5560	1205	1784	88%	2	1/2	20	36	342 / 348
CLD-2-84 (E)	84	5305	1209	2080	90%	2	1/2	20	31	355 / 365
CLD-2-96 (E)	96	4628	1131	2216	89%	2	1/2	20	29	370 / 379
CLD-3-108 (E)	108	5560	1205	2676	88%	3	1/2	30	36	513 / 522
CLD-3-120 (E)	120	5028	1176	2892	88%	3	1/2	30	33	530 / 547
CLD-3-132 (E)	132	4996	1111	3011	79%	3	1/2	30	32	545 / 559
CLD-4-144 (E)	144	5560	1205	3568	88%	4	1/2	40	36	684 / 696

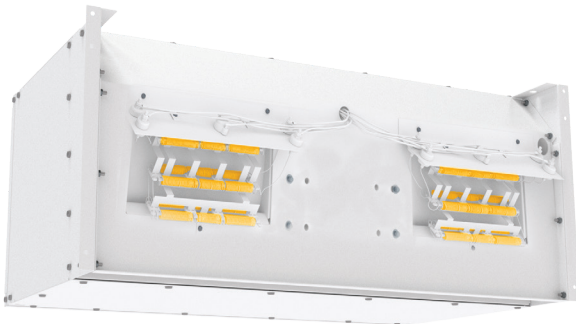
- ! For a unit over 12 feet long, or a non-standard electric heater kW, consult factory.
- ! Performance values based off AMCA certified values of unheated CED air curtain.

CLD & CLD-E | Sound Levels

High Speed	53 dBA	Low Speed	51 dBA	Measured 10 ft. from unit in a free field based on a 1 motor unit
-------------------	--------	------------------	--------	---

CLD & CLD-E | Single Phase Motor Options

Voltages available	120	208/230	480	Note: 575v is transformed down to 120v
Amp draw per motor	2.5	1.4	0.7	



Performance Highlight

Heating elements are mounted inside the plenum, on the discharge side of the blowers. Here, heat won't affect motor life and the heaters are protected from dust that would accumulate on them if they were mounted on the air intake.