

► ECC-HW/ST | PERFORMANCE

ECC-HW/ST | Performance Table

| MODEL | Nozzle Width (in.) | Max. FPM at Nozzle | Avg. FPM | Max. CFM | CFM at Nozzle | Outlet Velocity Uniformity | Number of Motors | Motor HP | Hot Water | | Steam | | Weight (lbs) |
|----------------|--------------------|--------------------|----------|----------|---------------|----------------------------|------------------|----------|-------------|-----------------|-------------|-----------------|--------------|
| | | | | | | | | | mbtu / Hour | Temp. Rise (°F) | mbtu / Hour | Temp. Rise (°F) | |
| ECC-1-36HW/ST | 36 | 4218 | 3695 | 2899 | 2541 | 95% | 1 | 3/4 | 97 | 35 | 108 | 39 | 206 |
| ECC-1-48HW/ST | 48 | 4218 | 2771 | 3867 | 2559 | 92% | 1 | 3/4 | 102 | 37 | 108 | 39 | 224 |
| ECC-1-60HW/ST | 60 | 4218 | 2218 | 4374 | 2528 | 91% | 1 | 3/4 | 100 | 36 | 114 | 41 | 255 |
| ECC-2-72HW/ST | 72.07 | 4218 | 3696 | 5803 | 5082 | 95% | 2 | 3/4 | 194 | 35 | 202 | 36 | 402 |
| ECC-2-84HW/ST | 84.07 | 4218 | 3169 | 6766 | 5063 | 93% | 2 | 3/4 | 205 | 37 | 210 | 38 | 415 |
| ECC-2-96HW/ST | 96.07 | 4218 | 2773 | 7732 | 5081 | 92% | 2 | 3/4 | 194 | 35 | 215 | 39 | 430 |
| ECC-2-108HW/ST | 108.07 | 4218 | 2472 | 8216 | 5090 | 95% | 2 | 3/4 | 192 | 35 | 198 | 36 | 455 |
| ECC-3-108HW/ST | 108.15 | 4218 | 3702 | 8702 | 7623 | 92% | 3 | 3/4 | 283 | 34 | 292 | 35 | 598 |
| ECC-3-120HW/ST | 120.15 | 4218 | 3174 | 9668 | 7614 | 95% | 3 | 3/4 | 307 | 37 | 305 | 37 | 615 |
| ECC-3-132HW/ST | 132.15 | 4218 | 2792 | 10177 | 7589 | 95% | 3 | 3/4 | 307 | 37 | 326 | 39 | 630 |
| ECC-4-144HW/ST | 144.22 | 4218 | 3696 | 11606 | 10164 | 95% | 4 | 3/4 | 388 | 35 | 390 | 35 | 794 |

! For a unit over 12 feet long, consult factory.

ECC-HW/ST | Sound Levels

| | | | | |
|-------------------|--------|------------------|--------|-------------------------------------------------------------------|
| High Speed | 63 dBA | Low Speed | 56 dBA | Measured 10 ft. from unit in a free field based on a 1 motor unit |
|-------------------|--------|------------------|--------|-------------------------------------------------------------------|

ECC-HW/ST | Single Phase Motor Options

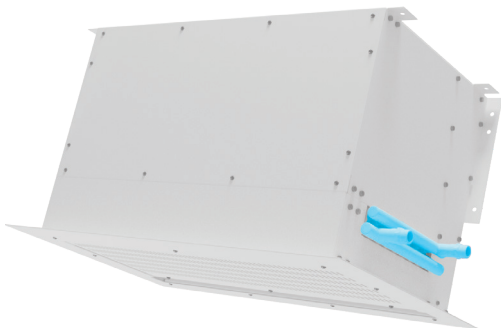
| | | | | | |
|---------------------------|-----|-----------|-----|-------------------------------------------------------------------------------------------------|---------------------------------|
| Voltages available | 120 | 208 - 240 | 277 | 480 | 575 |
| Amp draw per motor | 9.6 | 5.8 | 5.0 | Neutral wire will need to be run to use the 277V motor. If not, a transformer will be required. | A transformer will be required. |



NOTE

When requesting a quote for a Hot Water/Steam heated air curtain, please provide:

- Specifics of water/steam entering and exiting the air curtain
- Location for water/steam supplies and returns (both on one side or one each side)



Performance Highlight

Made-to-order steam or hot water coil mounted to intake of air curtain. Coil consists of 5/8 in. O.D. copper tubes and aluminum fins. Coils certified to ARI standard 410.