

## ► ECE-HW/ST | PERFORMANCE

### ECE-HW/ST | Performance Table

MODEL	Nozzle Width (in.)	Max. FPM at Nozzle	Avg. FPM	Max. CFM	CFM at Nozzle	Outlet Velocity Uniformity	Number of Motors	Motor HP	Hot Water		Steam		Weight (lbs)
									mbtu / Hour	Temp. Rise (°F)	mbtu / Hour	Temp. Rise (°F)	
ECE-1-36HW/ST	36	4218	3695	2899	2541	95%	1	3/4	97	35	108	39	113
ECE-1-48HW/ST	48	4218	2771	3867	2559	92%	1	3/4	102	37	108	39	145
ECE-1-60HW/ST	60	4218	2218	4374	2528	91%	1	3/4	100	36	114	41	180
ECE-2-72HW/ST	72.07	4218	3696	5803	5082	95%	2	3/4	194	35	202	36	249
ECE-2-84HW/ST	84.07	4218	3169	6766	5063	93%	2	3/4	205	37	210	38	281
ECE-2-96HW/ST	96.07	4218	2773	7732	5081	92%	2	3/4	194	35	215	39	306
ECE-2-108HW/ST	108.07	4218	2472	8216	5090	91%	2	3/4	192	35	198	36	329
ECE-3-108HW/ST	108.15	4218	3702	8702	7623	95%	3	3/4	283	34	292	35	365
ECE-3-120HW/ST	120.15	4218	3174	9668	7614	95%	3	3/4	307	37	305	37	406
ECE-3-132HW/ST	132.15	4218	2792	10177	7589	95%	3	3/4	307	37	326	39	470
ECE-4-144HW/ST	144.22	4218	3696	11606	10164	95%	4	3/4	388	35	390	35	491

### ECE-HW/ST | Sound Levels

<b>High Speed</b>	63 dBA	<b>Low Speed</b>	56 dBA	Measured 10 ft. from unit in a free field based on a 1 motor unit
-------------------	--------	------------------	--------	---

### ECE-HW/ST | Single Phase Motor Options

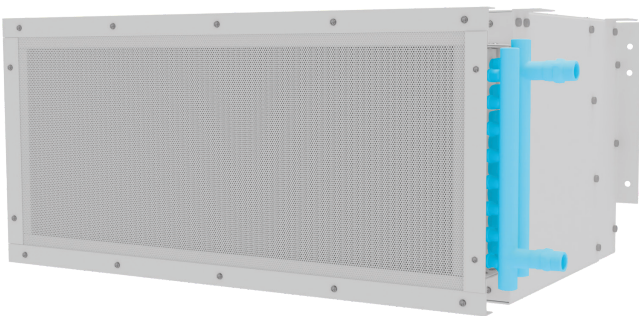
<b>Voltages available</b>	120	208 - 240	277	480	575
<b>Amp draw per motor</b>	9.6	5.8	5.0	Neutral wire will need to be run to use the 277V motor. If not, a transformer will be required.	A transformer will be required.



#### NOTE

**When requesting a quote for a Hot Water/Steam heated air curtain, please provide:**

- Specifics of water/steam entering and exiting the air curtain
- Location for water/steam supplies and returns (both on one side or one each side)



#### Performance Highlight

Made-to-order steam or hot water coil mounted to intake of air curtain. Coil consists of 5/8 in. O.D. copper tubes and aluminum fins. Coils certified to ARI standard 410.