

► ECE & ECE-E | PERFORMANCE

ECE & ECE-E | Performance Table

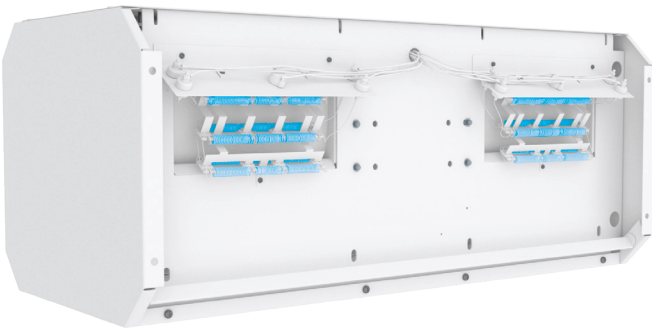
MODEL	Nozzle Width (in.)	Max. FPM at Nozzle	Avg. FPM	Max. CFM	CFM at Nozzle	Outlet Velocity Uniformity	Number of Motors	Motor HP	Electric Heat		Weight (lbs) Un/Heated
									Heater kW	Temp. Rise (° F)	
ECE-1-36 (E)	36	4218	3695	2899	2541	95%	1	3/4	10	13	90 / 95
ECE-1-42 (E)	42	4218	3169	3384	2532	93%	1	3/4	10	13	97 / 102
ECE-1-48 (E)	48	4218	2771	3867	2559	92%	1	3/4	10	13	104 / 109
ECE-1-60 (E)	60	4218	2218	4374	2528	91%	1	3/4	10	13	117 / 121
ECE-2-60 (E)	60	4218	3315	5050	3812	94%	2	3/4	15	13	147 / 155
ECE-2-72 (E)	72	4218	3696	5803	5082	95%	2	3/4	20	13	169 / 177
ECE-2-84 (E)	84	4218	3169	6766	5063	93%	2	3/4	20	13	187 / 195
ECE-2-96 (E)	96	4218	2773	7732	5081	92%	2	3/4	20	13	203 / 210
ECE-3-108 (E)	108	4218	3702	8702	7623	95%	3	3/4	30	13	245 / 255
ECE-3-120 (E)	118	4218	3174	9668	7614	94%	3	3/4	30	13	274 / 284
ECE-3-132 (E)	133	4218	2792	10853	7589	94%	3	3/4	30	13	290 / 301
ECE-4-144 (E)	145	4218	3696	11606	10164	95%	4	3/4	40	13	338 / 354

ECE & ECE-E | Sound Levels

High Speed	63 dBA	Low Speed	56 dBA	Measured 10 ft. from unit in a free field based on a 1 motor unit
-------------------	--------	------------------	--------	---

ECE & ECE-E | Single Phase Motor Options

Voltages available	120	208 - 240	277	480	575
Amp draw per motor	9.6	5.8	5.0	Neutral wire will need to be run to use the 277V motor. If not, a transformer will be required.	A transformer will be required.



Performance Highlight

Heating elements are mounted inside the plenum, on the discharge side of the blowers. Here, heat won't affect motor life and the heaters are protected from dust that would accumulate on them if they were mounted on the air intake.