

## ▶ ETA-HW/ST | PERFORMANCE

### ETA-HW/ST | Performance Table

MODEL	Nozzle Width (in.)	FPM	CFM	Outlet Velocity Uniformity	Number of Motors	Motor HP	Hot Water		Steam		Weight (lbs)
							mbtu / Hour	Temp. Rise (°F)	mbtu / Hour	Temp. Rise (°F)	
ETA-1-36HW/ST	36	2060	1401	88%	1	3/4	52.2	34.2	54	35.3	113
ETA-1-48HW/ST	48	1849	1757	84%	1	3/4	69.8	36.5	70.4	36.8	145
ETA-1-60HW/ST	60	1619	2007	72%	1	3/4	78.6	35.9	84.5	38.6	180
ETA-2-72HW/ST	72	2060	2802	88%	2	3/4	105.9	34.7	110.2	36.1	249
ETA-2-84HW/ST	84	2022	3356	88%	2	3/4	127.3	34.8	127.5	34.8	281
ETA-2-96HW/ST	96	1849	3514	84%	2	3/4	138.9	36.2	143	37.3	306
ETA-3-108HW/ST	108	2060	4203	88%	3	3/4	163.8	35.7	166.2	36.2	365
ETA-3-120HW/ST	120	2033	4757	88%	3	3/4	185.3	35.7	186.5	35.9	406
ETA-3-132HW/ST	132	1860	4809	72%	3	3/4	194.2	37	196.5	37.5	470
ETA-4-144HW/ST	144	2060	5604	88%	4	3/4	222	36.3	221.7	36.3	491
ETA-4-156HW/ST	156	2040	6158	88%	4	3/4	243.6	36.3	241.8	36	530
ETA-4-168HW/ST	168	2022	6712	88%	4	3/4	265.2	36.2	261.8	35.7	560

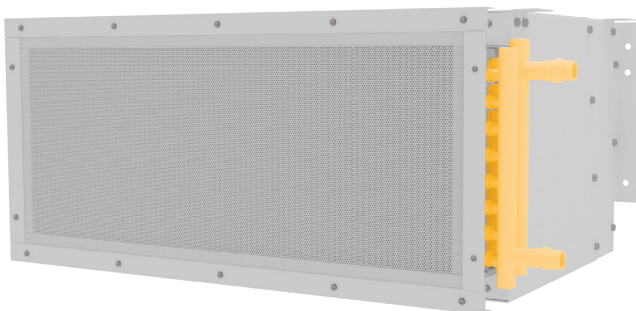
**!** For other coil capacities consult factory. Heater data based on AMCA licensed values from unheated units.

### ETA-HW/ST | Sound Levels

Measured 10 ft. from unit in a free field based on a 1 motor unit      63 dBA

### ETA-HW/ST | Single Phase Motor Options

Voltages available	120	208/230	480	575	For dual speed motors, consult factory. For three phase motors, consult factory
Amp draw per motor	8.0	3.6	2.0	1.5	



### Performance Highlight

Made-to-order steam or hot water coil mounted to intake of air curtain. Coil consists of 5/8 in. O.D. copper tubes and aluminum fins. Coils certified to ARI standard 410.