

## ▶ ETD & ETD-E | PERFORMANCE

### ETD & ETD-E | Performance Table

MODEL	Nozzle Width (in.)	Max. FPM at Nozzle	Avg. FPM	Max. CFM	CFM at Nozzle	Outlet Velocity Uniformity	Number of Motors	Motor HP	Electric Heat		Weight (lbs) Un / Heated
									Heater kW	Temp. Rise (°F)	
ETD-1-36 (E)	36	H 4218 L 2837	H 3695 L 2487	H 2899 L 1950	H 2541 L 1710	95%	1	3/4	10	H 13 L 19	90 / 95
ETD-1-42 (E)	42	H 4218 L 2837	H 3169 L 2133	H 3384 L 2276	H 2532 L 1696	93%	1	3/4	10	H 13 L 19	97 / 102
ETD-1-48 (E)	48	H 4218 L 2837	H 2771 L 1865	H 3867 L 2601	H 2559 L 1721	92%	1	3/4	10	H 13 L 19	104 / 109
ETD-1-60 (E)	60	H 4218 L 2837	H 2218 L 1493	H 4374 L 2792	H 2528 L 1703	91%	1	3/4	10	H 13 L 19	117 / 121
ETD-2-60 (E)	60	H 4218 L 2837	H 3315 L 2231	H 5050 L 3252	H 3812 L 2565	94%	2	3/4	15	H 13 L 19	147 / 155
ETD-2-72 (E)	72	H 4218 L 2837	H 3696 L 2488	H 5803 L 3903	H 5082 L 3420	95%	2	3/4	20	H 13 L 19	169 / 177
ETD-2-84 (E)	84	H 4218 L 2837	H 3169 L 2133	H 6766 L 4551	H 5063 L 3382	93%	2	3/4	20	H 13 L 19	187 / 195
ETD-2-96 (E)	96	H 4218 L 2837	H 2773 L 1866	H 7732 L 5201	H 5081 L 3417	92%	2	3/4	20	H 13 L 19	203 / 210
ETD-3-108 (E)	108	H 4218 L 2837	H 3702 L 2486	H 8702 L 5853	H 7623 L 5130	95%	3	3/4	30	H 13 L 19	245 / 255
ETD-3-120 (E)	118	H 4218 L 2837	H 3174 L 2134	H 9668 L 6503	H 7614 L 5127	94%	3	3/4	30	H 13 L 19	274 / 284
ETD-3-132 (E)	133	H 4218 L 2837	H 2792 L 1885	H 10853 L 7155	H 7589 L 5104	94%	3	3/4	30	H 13 L 19	290 / 301
ETD-4-144 (E)	145	H 4218 L 2837	H 3696 L 2488	H 11606 L 7806	H 10164 L 6840	95%	4	3/4	40	H 13 L 19	338 / 354

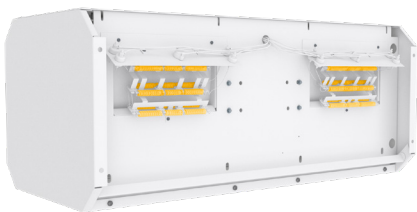
**!** For a unit over 12 feet long, or a non-standard electric heater kW, consult factory.

### ETD & ETD-E | Sound Levels

High Speed	63 dBA	Low Speed	56 dBA	Measured 10 ft. from unit in a free field based on a 1 motor unit
------------	--------	-----------	--------	-------------------------------------------------------------------

### ETD & ETD-E | Single Phase Motor Options

Voltages available	120	208/230	480	575	For three phase motors, consult factory
Amp draw per motor	8.0	3.6	2.0	1.5	



### Performance Highlight

Heating elements are mounted inside the plenum, on the discharge side of the blowers. Here, heat won't affect motor life and the heaters are protected from dust that would accumulate on them if they were mounted on the air intake.