

▶ FAC-E | PERFORMANCE

Freezer Aire Curtain™ | Performance Table

MODEL	Nozzle Width (in.)	Max. FPM at Nozzle	Avg. FPM	Max. CFM	CFM at Nozzle	Outlet Velocity Uniformity	Number of Motors	Motor HP	Electric Heat		Weight (lbs)
									Heater kW	Temp. Rise (°F)	
FAC-1-36E	36	H 4218 L 2837	H 3695 L 2487	H 2899 L 1950	H 2541 L 1710	95%	1	3/4	10	H 13 L 19	95
FAC-1-42E	42	H 4218 L 2837	H 3169 L 2133	H 3384 L 2276	H 2532 L 1696	93%	1	3/4	10	H 13 L 19	102
FAC-1-48E	48	H 4218 L 2837	H 2771 L 1865	H 3867 L 2601	H 2559 L 1721	92%	1	3/4	10	H 13 L 19	109
FAC-1-60E	60	H 4218 L 2837	H 2218 L 1493	H 4374 L 2792	H 2528 L 1703	91%	1	3/4	10	H 13 L 19	121
FAC-2-60E	60	H 4218 L 2837	H 3315 L 2231	H 5050 L 3252	H 3812 L 2565	94%	2	3/4	15	H 13 L 19	155
FAC-2-72E	72	H 4218 L 2837	H 3696 L 2488	H 5803 L 3903	H 5082 L 3420	95%	2	3/4	20	H 13 L 19	177
FAC-2-84E	84	H 4218 L 2837	H 3169 L 2133	H 6766 L 4551	H 5063 L 3382	93%	2	3/4	20	H 13 L 19	195
FAC-2-96E	96	H 4218 L 2837	H 2773 L 1866	H 7732 L 5201	H 5081 L 3417	92%	2	3/4	20	H 13 L 19	210
FAC-3-108E	108	H 4218 L 2837	H 3702 L 2486	H 8702 L 5853	H 7623 L 5130	95%	3	3/4	30	H 13 L 19	255
FAC-3-120E	118	H 4218 L 2837	H 3174 L 2134	H 9668 L 6503	H 7614 L 5127	94%	3	3/4	30	H 13 L 19	284
FAC-3-132E	133	H 4218 L 2837	H 2792 L 1885	H 10853 L 7155	H 7589 L 5104	94%	3	3/4	30	H 13 L 19	301
FAC-4-144E	145	H 4218 L 2837	H 3696 L 2488	H 11606 L 7806	H 10164 L 6840	95%	4	3/4	40	H 13 L 19	354

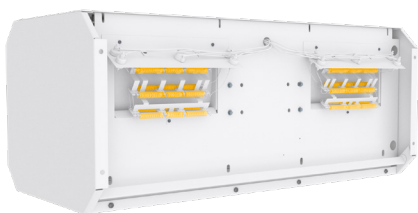
! For a unit over 12 feet long, or a non-standard electric heater, consult factory.

FAC-E | Sound Levels

High Speed	63 dBA	Low Speed	56 dBA	Measured 10 ft. from unit in a free field based on a 1 motor unit
-------------------	--------	------------------	--------	---

FAC-E | Single Phase Motor Options

Voltages available	120	208 / 230	480	575	For three phase motors, consult factory
Amp draw per motor	8.0	3.6	2.0	1.5	



Performance Highlight

Heating elements are mounted inside the plenum, on the discharge side of the blowers. Here, heat won't affect motor life and the heaters are protected from dust that would accumulate on them if they were mounted on the air intake.