

▶ HDC | PERFORMANCE

HDC | Performance Table

MODEL	Nozzle Width (in.)	Max. FPM at Nozzle	Max. CFM at Nozzle	Outlet Velocity Uniformity	Number of Motors	Motor HP	Weight (lbs)
HDC-1-48	48	6200	4554	92%	1	3	342
HDC-1-60	60	5800	4855	92%	1	3	380
HDC-1-72	72	5900	5579	86.3%	1	3	400
HDC-2-96	96	6200	9108	92%	2	3	681
HDC-2-108	108	6200	9409	92%	2	3	719
HDC-2-120	120	5800	9710	92%	2	3	757
HDC-2-132	132	5900	10434	86.3%	2	3	777
HDC-2-144	144	5900	11158	86.3%	2	3	797
HDC-3-144	144	6200	13662	92%	3	3	1020
HDC-3-156	156	6200	13963	92%	3	3	1058
HDC-3-168	168	6200	14687	86.3%	3	3	1078
HDC-3-180	180	6200	14988	86.3%	3	3	1116
HDC-3-192	192	6200	15712	86.3%	3	3	1136

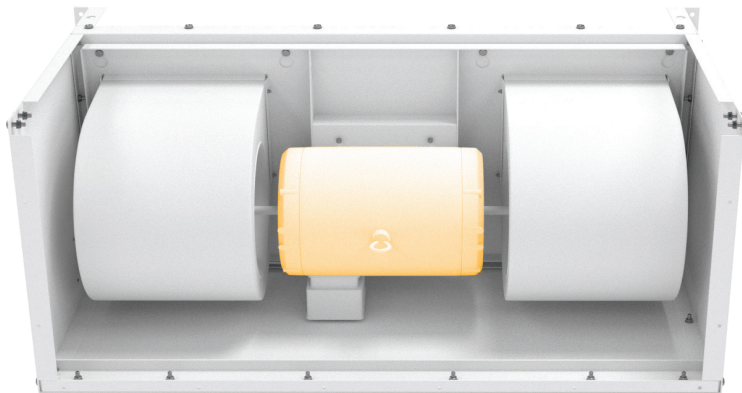
! For a unit over 16 feet long, consult factory.

HDC | Sound Levels

High Speed 69 dBA Measured 10 ft. from unit in a free field based on a 1 motor unit

HDC | Three Phase Motor Options

Voltages available 208 240 480 575 / 3 / 60



Performance Highlight
5 HP motors are available for higher door openings