

## ▶ MP-HW/ST | PERFORMANCE

### MP-HW/ST | Performance Table

MODEL	Nozzle Width (in.)	Max. FPM at Nozzle	Avg. Outlet Velocity (FPM)	Airflow Rate (CFM)	Outlet Velocity Uniformity	Power Rating	Number of Motors	Motor HP	Weight	Hot Water		Steam	
										mbtu / Hour	Temp. Rise (°F)	mbtu / Hour	Temp. Rise (°F)
MP-1-30 HW/ST	29	3050	1335	801	66%	0.2	1	1/5	42	38	35	30	34
MP-1-36 HW/ST	35	3262	1348	984	84%	0.3	1	1/5	53	38	36	39	36
MP-1-42 HW/ST	41	3269	1462	1243	84%	0.3	1	1/5	60	48	36	47	35
MP-1-48 HW/ST	48	3256	1520	1474	85%	0.4	1	1/5	67	58	36	55	35
MP-1-60 HW/ST	59	3218	1529	1865	84%	0.5	1	1/5	85	71	35	70	35
MP-2-72 HW/ST	71	3262	1348	1968	84%	0.6	2	1/5	94	76	36	72	34
MP-2-84 HW/ST	83	3269	1462	2486	84%	0.7	2	1/5	105	94	35	97	36
MP-2-96 HW/ST	95	3256	1520	2948	85%	0.8	2	1/5	114	112	35	113	36
MP-2-108 HW/ST	107	3242	1525	3339	84%	0.8	2	1/5	130	125	35	128	35
MP-2-120 HW/ST	117	3218	1529	3730	84%	0.9	2	1/5	141	146	36	142	35

### MP-HW/ST | Velocity Projection

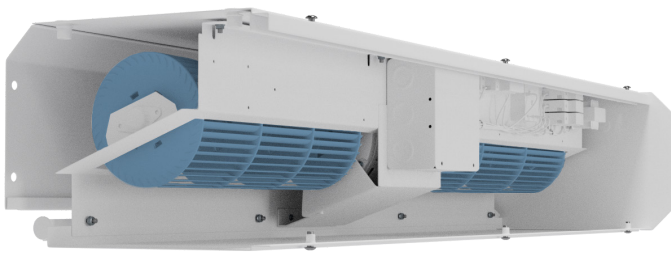
Distance From Nozzle	40"	80"	120"	160"
MP-1-36 Core Velocity (fpm)	1048	784	677	603

### MP-HW/ST | Sound Levels

Measured 10 ft. from unit in a free field based on a 1 motor unit	53 dBA
---	--------

### MP-HW/ST | Single Phase Motor Options

Voltages available	120	208/230	480	575
Amp draw per motor	4.4	2.0	1.1	0.9



### Performance Highlight

This unit can fit a larger diameter tangential blower wheel than competitors' models to increase performance without increasing size. The motor/ blower plate comes out of the unit as an entire piece and the electrical connections can be made on the top or sides of the unit for more versatility.