

► MP | PERFORMANCE

MP | Performance Table

MODEL	Nozzle Width (in.)	Max. FPM at Nozzle	Avg. Outlet Velocity (FPM)	Airflow Rate (CFM)	Outlet Velocity Uniformity	Power Rating (kW)	Number of Motors	Motor HP	Weight (lbs)
MP-1-30	29	3050	1335	801	66%	0.22	1	1/5	42
MP-1-36	35	3262	1348	984	84%	0.28	1	1/5	53
MP-1-42	41	3269	1462	1243	84%	0.33	1	1/5	60
MP-1-48	48	3256	1520	1474	85%	0.38	1	1/5	67
MP-1-60	59	3218	1529	1865	84%	0.46	1	1/5	85
MP-2-72	71	3262	1348	1968	84%	0.56	2	1/5	94
MP-2-84	83	3269	1462	2486	84%	0.66	2	1/5	105
MP-2-96	95	3256	1520	2948	85%	0.76	2	1/5	114
MP-2-108	107	3242	1525	3339	84%	0.84	2	1/5	130
MP-2-120	117	3218	1529	3730	84%	0.92	2	1/5	141

! For Hot Water or Steam heat, consult factory.

MP | Velocity Projection

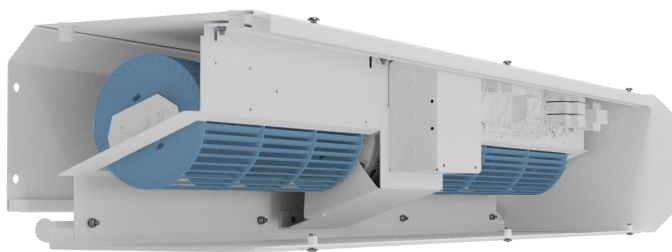
Distance From Nozzle	40"	80"	120"	160"
MP-1-36 Core Velocity (fpm)	1048	784	677	603

MP | Sound Levels

Measured 10 ft. from unit in a free field based on a 1 motor unit	53 dBA
---	--------

MP | Single Phase Motor Options

Voltages available	120	208/230	480	575
Amp draw per motor	4.4	2.0	1.1	0.9



Performance Highlight

This unit can fit a larger diameter tangential blower wheel than competitors' models to increase performance without increasing size. The motor/ blower plate comes out of the unit as an entire piece and the electrical connections can be made on the top or sides of the unit for more versatility.

The AMCA Certified Ratings Seal applies to airflow rate, average outlet velocity, outlet velocity uniformity, velocity projection and power rating at free delivery only.

Powered Aire Inc. certifies that the Model MP Air Curtain shown herein is licensed to bear the AMCA Seal for Air Performance. The ratings shown are based on tests and procedures performed in accordance with AMCA Publication 211 and comply with the requirements of the AMCA Certified Ratings Program.

May 2020
PAAC-601

