

## ► REV & REV-E | PERFORMANCE

REV & REV-E | Performance Table

Model	Air Curtain Discharge Width (in.)	Door Opening Width Range (in.)	Max. FPM at Nozzle	Avg. FPM @ Air Curtain Discharge*	CFM at Nozzle	Outlet Velocity Uniformity	Number of Motors	Motor HP	Electric Heat		Air Curtain Weight (lbs)**
									KW	Temp. Rise (°F)	
REV-1-36 (E)	36	54 up to 66	5560	1205	892	88%	1	1/2	10	36	103
REV-1-48 (E)	48	66 up to 78	4628	1131	1108	89%	1	1/2	10	29	114
REV-1-60 (E)	60	78 up to 90	5096	998	1227	79%	1	1/2	10	26	150
REV-2-72 (E)	72	90 up to 102	5560	1205	1784	88%	2	1/2	20	36	200
REV-2-84 (E)	84	102 up to 114	5305	1209	2080	90%	2	1/2	20	31	231
REV-2-96 (E)	96	114 up to 126	4628	1131	2216	89%	2	1/2	20	29	255
REV-3-108 (E)	108	126 up to 138	5560	1205	2676	88%	3	1/2	30	36	295
REV-3-120 (E)	120	138 up to 150	5028	1176	2892	88%	3	1/2	30	33	336
REV-3-132 (E)	132	150 up to 162	4996	1111	3011	79%	3	1/2	30	32	399
REV-4-144 (E)	144	162 up to 174	5560	1205	3568	88%	4	1/2	40	36	400

\*As nozzles are custom per unit, the actual FPM leaving the nozzle will vary per application.

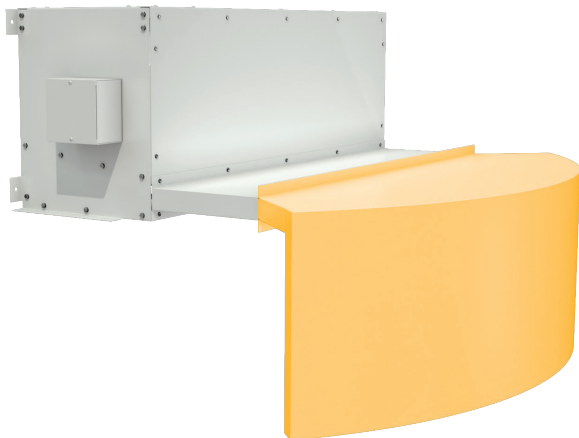
\*\*Air curtain only. Weight will increase with addition of extension and nozzle and will depend on the dimensions of the custom nozzle.

### REV | Sound Levels

High Speed	63 dBA	Low Speed	56 dBA	Measured 10 ft. from unit in a free field based on a 1 motor unit
------------	--------	-----------	--------	---

### REV | Single Phase Motor Options

Voltages available	120	208 / 230	480	575	For three phase motors, consult factory
Amp draw per motor	8.0	3.6	2.0	1.5	



#### Performance Highlight

Nozzles are custom-built to match curvature of revolving door. Each nozzle can be color-matched to the door. Colors can also be selected based on interior of building/aesthetics.