

► TIG | MECHANICAL DETAILS & DRAWINGS (1 HEATER)

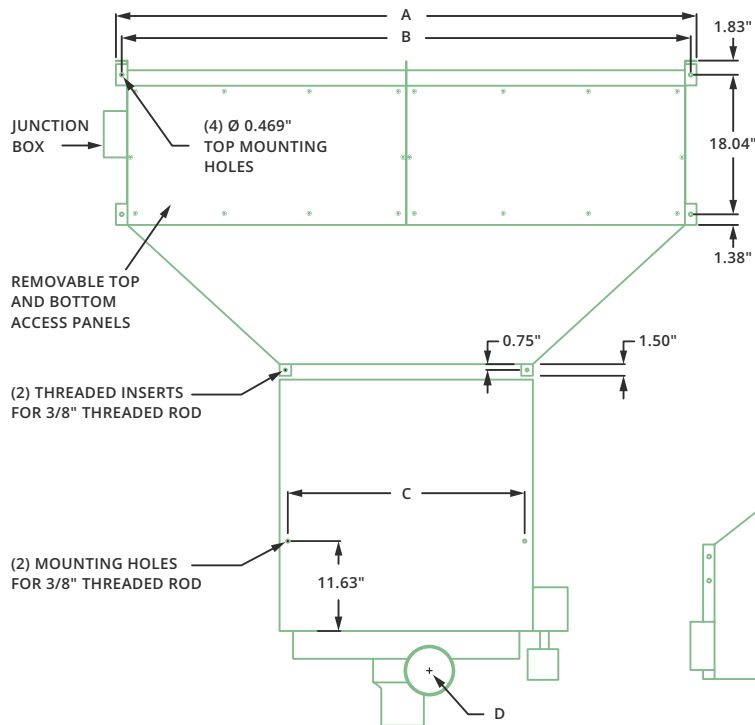
TIG | 1-Heater Mechanical Information Table

MODEL	Air Curtain Width - A (in.)	Mounting Width - B (in.)	Hanging Width - C (in.)	Flue Ø - D (in.)	Heater Size	Gas Inlet
TIG-1-36	39.00	37.50	18.63	5	150	0.5
TIG-1-48	51.00	49.50	18.63	5	150	0.5
TIG-1-60	63.00	61.50	18.63	5	150	0.5
TIG-2-72	75.07	73.57	30.63	5	250	0.75
TIG-2-84	87.07	85.57	30.63	5	250	0.75
TIG-2-96	99.07	97.57	30.63	5	250	0.75
TIG-3-108	111.15	109.65	48.63	5	350	0.75



NOTES

1. Heater independently supported 2 inches away from duct transition.
2. Duct transition bolted to air curtain and will need to be supported.
3. Installer responsible for structurally sound mounting of the unit.
4. Verify that overall dimensions will fit in the opening.
5. Air curtain to be installed so that the air stream is unobstructed.



TOP

FRONT

