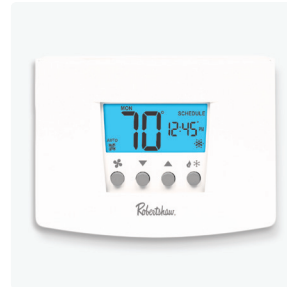


Control Options: Thermostats

The thermostat turns the electric or gas heat in the unit on and off while the fans are running based on the room temperature. Can be 24 volts or line voltage.



**Low Voltage 24V
AC Thermostat**



Programmable Digital Thermostat
A thermostat that is programmable with a digital display (7-day, 1/2 hour increments, specify up to 4 time periods per day).



**Line Voltage
Thermostat**



Locking Cover
Limits access to the thermostat.

Control Options: Power Circuit Protection

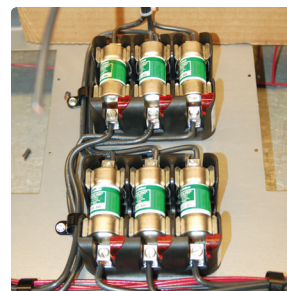


Disconnect-Non Fused

A switch that will disconnect all power from the unit so that the unit can be serviced or inspected.

Disconnect-Fused

A switch that will disconnect all power from the unit so that the unit can be serviced or inspected and includes fuses for circuit protection.



Single Point Power Connection

For units that would typically require more than one power source due to high amp draws according to the National Electric Code, branch fusing can be added so that the unit can be run from a single power source.