



Scan for complete model information and downloads

BCE

888-321-AIRE (2473)  
PoweredAire.com



3.3.0

# BCE



## IMPORTANT NOTE:

For optimum use for both climate control and insect control the air curtain should be installed on the inside of the door opening. If the application is strictly for insect control, the unit may be installed on the exterior of the opening.

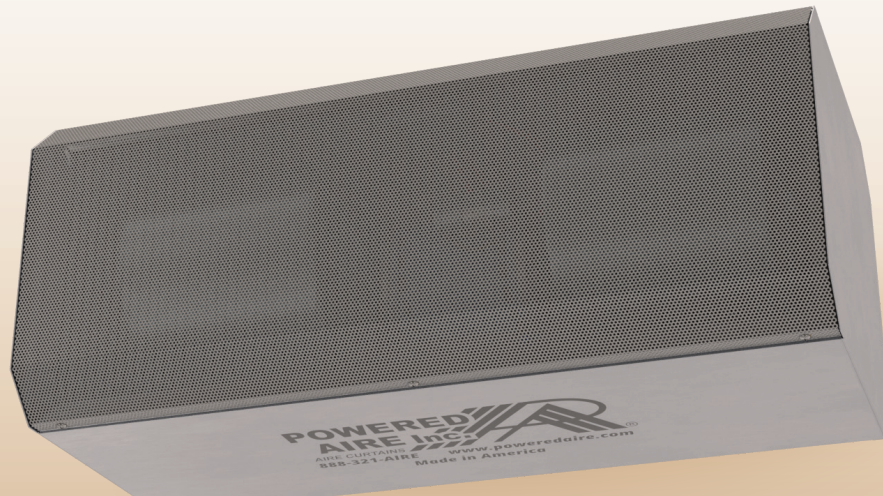
## OPTIONS

### FILTER

½" Cleanable

### OUTDOOR USE

Can be ETL Listed for outdoor use if specified



## AT A GLANCE

Single Incremental Widths

3' to 12'

Max Installation Height

8'

Heavy Duty Motors

½ HP

## KEY DESIGN FEATURES

- 18 gauge 304 stainless steel in a number three finish.
- Heavy duty 1/2 HP motors, 1400 rpm each. 50/60 cycle. Unit is single speed.
- Galvanized fans.
- Air intake screen is perforated stainless steel with mill grain finish.
- The motor/blower plate comes out of the unit as an entire piece and the electrical connections can be made on the top or sides of the unit for more versatility.
- Directional air foil vane factory set to facilitate deflection of air stream +/-20 degrees.
- USDA, FDA and AIB approved method for insect control.

## RECOMMENDED CONTROLS

- HAND / OFF / AUTO switch
- Magnetic Door Switch for activation

