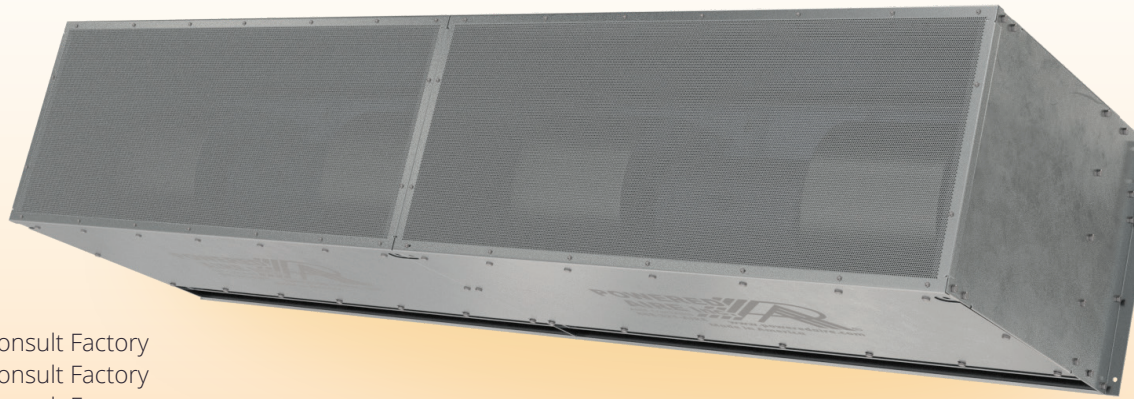




# BPA



BPA (Big Powered Aire) is recommended for doors up to 30 feet high. The BPA has top and bottom access panels to replace or service motors or blowers without lowering entire unit or bottom half of unit.



## OPTIONS

### HEATING

- Hot Water . . . . . Consult Factory
- Steam . . . . . Consult Factory
- Indirect Gas . . . . . Consult Factory

## AT A GLANCE

Single Incremental Widths

5' to 20'

Max Installation Height

30'

Heavy Duty Motors

7.5 HP

### KEY DESIGN FEATURES

- Outer cabinet constructed of 16-gauge 304 stainless steel with #3 finish
- 7.5 HP TEAO (Totally Enclosed Air Over) direct-drive single-speed motor(s)
- High-efficiency discharge plenum with adjustable air foil vane (+/-20°)
- Top and bottom access panels for servicing and removal of motor-blower assembly
- NEMA 12 control panel with factory installed magnetic motor starter, overload relays, and control transformer

### RECOMMENDED CONTROLS

- Activation by 24V magnetic door switch
- Toggle disconnect switch
- Hand/Off/Auto selector switch

