



CHA-E

ABOVE CEILING



The CHA-E electrically heated air curtain has been tested in accordance with ANSI/AMCA 220 and meets the criteria for use as an exception to the vestibule requirement in Climate Zones 3 and above. It is specifically designed to be dropped into the ceiling above customer entryways where a standard air curtain is not desired.

OPTIONS

HEATING

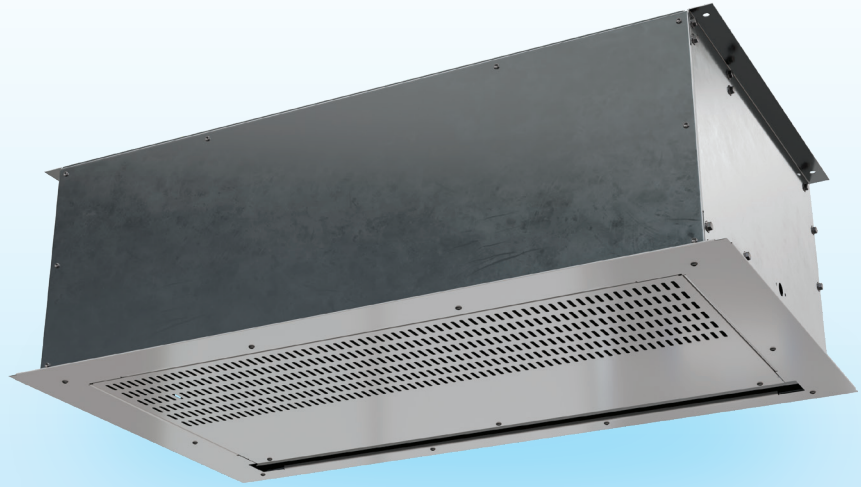
- Unheatedpg 21
- Hot Waterpg 27
- Steampg 27

FILTER

½" Cleanable

GRILLE COLOR

The white grille is standard with this model. Consult factory for custom color or metal.



AT A GLANCE

Single Incremental Widths

3' to 12'

Max Installation Height

14'

Heavy Duty Motors

¾ HP

KEY DESIGN FEATURES

- Meets ASHRAE 90.1 and IECC requirements for vestibule exception
- AMCA tested performance
- White decorative intake grille with hinged access panel (consult factory for custom finishes)
- ¾ HP ODP (Open Drip Proof) direct-drive dual-speed motor(s)
- High-efficiency discharge plenum with adjustable air foil vane (+/-20°)
- Factory mounted single-stage electric heaters
- Single point power connection available (see electrical table)
- Alternate heater kW available (consult factory)

RECOMMENDED CONTROLS & ACCESSORIES

- Activation by 24V magnetic door switch
- Toggle disconnect switch
- SmartTouch controller
- Filter (washable)

