



CLD



CLD-E



LIGHT DUTY

ABOVE CEILING



The Chameleon Light Duty (CLD) is specifically designed to be dropped into the ceiling above customer entry ways where a standard air curtain cannot be exposed. Like the CED, the Chameleon also has the least objectionable airflow.

OPTIONS

ELECTRIC HEAT

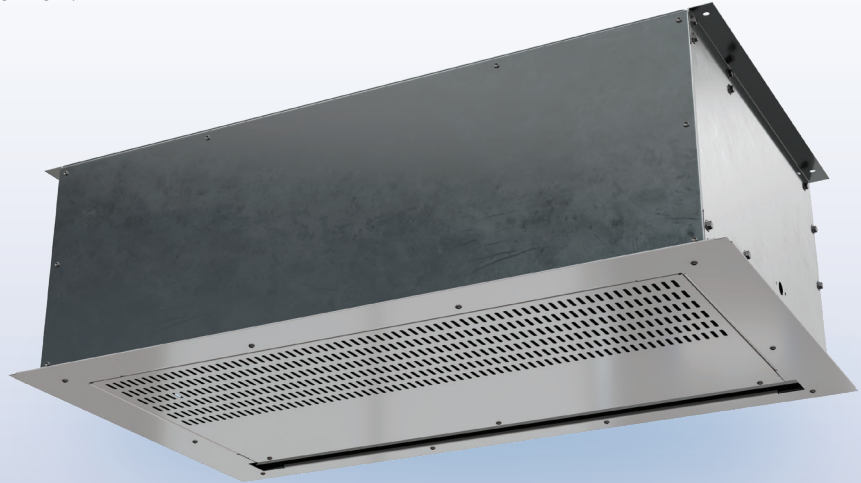
Electric CLD-E
Hot Water pg 83
Steam pg 83

FILTER

½" Cleanable

CUSTOM GRILLES

The white grille is standard with this model.
Consult factory for custom color or metal.



AT A GLANCE

Single Incremental Widths

3' to 12'

Max Installation Height

11'

Heavy Duty Motors

½ HP

KEY DESIGN FEATURES

- White decorative intake grille with hinged access panel (consult factory for custom finishes)
- 1/2 HP ODP (Open Drip Proof) direct-drive dual-speed motor(s)
- High-efficiency discharge plenum with adjustable air foil vane (+/-20°)
- **Electric Only:** Factory mounted single-stage electric heaters
- **Electric Only:** Single point power connection available (see electrical table)
- **Electric Only:** Alternate heater kW available (consult factory)

RECOMMENDED CONTROLS & ACCESSORIES

- Activation by 24V magnetic door switch
- Toggle disconnect switch
- SmartTouch controller
- Filter (washable)

