



ECE-HW



ECE-ST

# ECE-HW/ST



Powered Aire's ECo-Motor™ models are designed to maximize employee/customer comfort while helping to reduce energy costs through the use of an advanced motor that optimizes performance. ECE-HW/ST features electrically commutated (EC) motors that are significantly more energy efficient than traditional PSC motors. The motors are specifically designed for air curtain applications, with the time between motor activation and maximum speed less than 1 second.

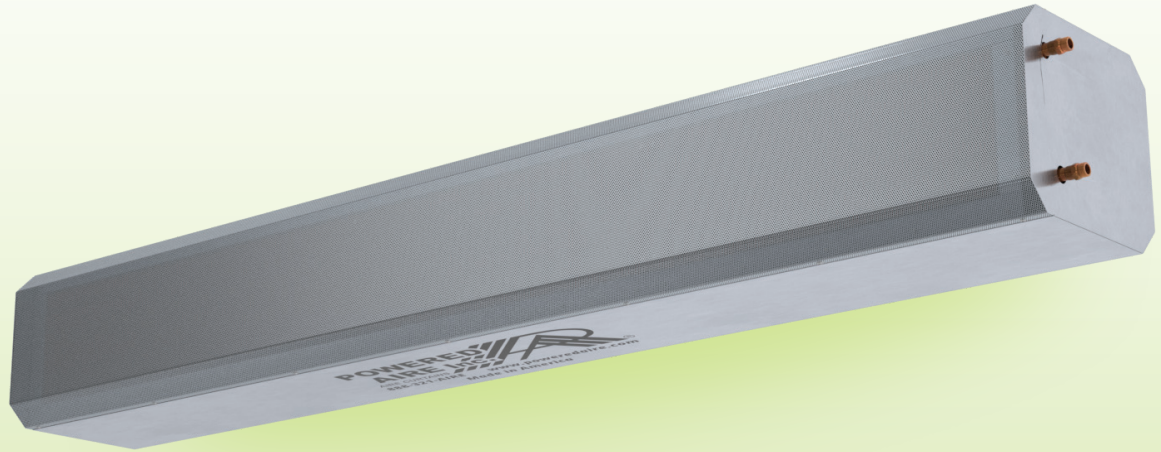
## OPTIONS

### HEATING

- Hot Water . . . . .ECE-HW
- Steam . . . . .ECE-ST
- Unheated . . . . .pg 43
- Electric. . . . .pg 43

### FILTER

- 1" Cleanable



## AT A GLANCE

Single Incremental Widths

3' to 12'

Max Installation Height

14'

Heavy Duty Motors

3/4 HP

### KEY DESIGN FEATURES

- Outer cabinet constructed of 18-gauge 304 stainless steel with #3 finish
- 1/2 HP ODP (Open Drip Proof) direct-drive dual-speed motor(s)
- High-efficiency discharge plenum with adjustable air foil vane (+/-20°)
- NEMA 12 control panel
- Coil made to AHRI Standard 410
- Hot water coil comprised of galvanized steel casing, 5/8" copper tube, aluminum fins, and same end supply/return connections
- Leak tested at 450 psi
- Single length steam coils up to 10 ft
- Custom coil selections available (consult factory)

### RECOMMENDED CONTROLS & ACCESSORIES

- Activation by 24V magnetic door switch
- Toggle disconnect switch
- SmartTouch controller
- Hot water or steam control valve with actuator
- Filter (washable)