



# LDC

LIGHT DUTY

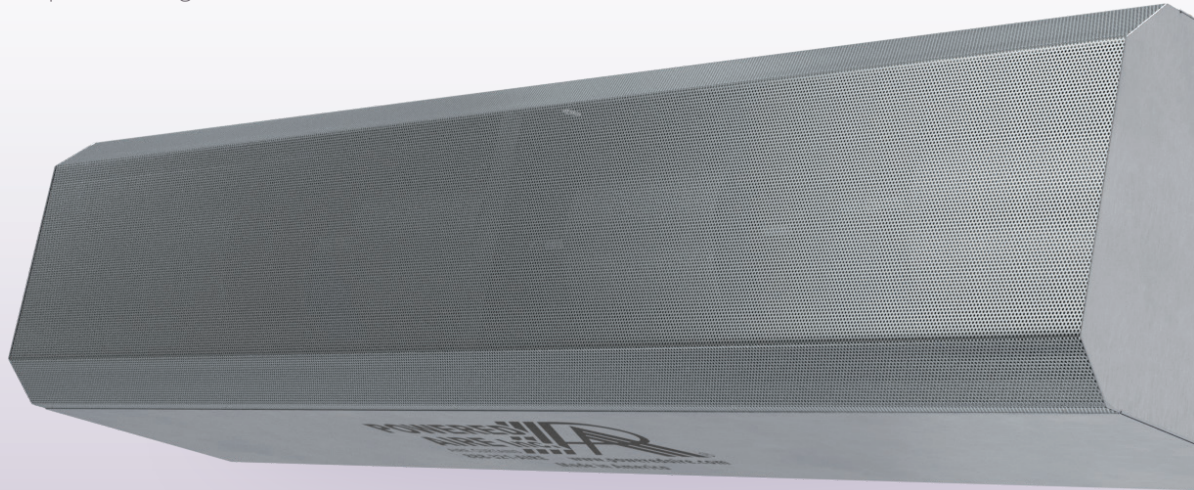


The LDC air curtain is designed for use in corrosive atmospheres. This light duty model has 3/4 hp motors and is unheated. This model differs from Powered Aire's standard units by featuring a higher grade stainless steel case and stainless steel internal components for added protection against rust and corrosion.

## OPTIONS

### FILTER

1/2" Cleanable



## AT A GLANCE

Single Incremental Widths

3' to 12'

Max Installation Height

12'

Heavy Duty Motors

3/4 HP

### KEY DESIGN FEATURES

- Heavy duty case is 18 gauge 316 stainless steel in a number three finish.
- Heavy duty Total Enclosed Aire Over (TEAO) 3/4 HP Dirty Duty Autophoretic motors with 316 stainless steel shafts. 1725 rpm each.
- 316 stainless steel fans and housings.
- All fastening components including screws and bolts are type 316 stainless steel.
- Air intake screen is perforated 316 stainless steel with mill grain finish.
- High efficiency discharge plenum with directional air foil vane factory set to facilitate deflection of air stream +/- 20°.
- NEMA 4X control panel constructed of 316 stainless steel.

### RECOMMENDED CONTROLS

- Panel mounted HAND / OFF / AUTO switch
- Magnetic Door switch for activation

### APPLICATIONS

- Maritime
- Beachfront Properties
- Manufacturing Facilities
- Swimming Pools
- Car Washes
- Pharmaceutical
- Food Processing Plants
- Any location where corrosive fumes or vapors are present