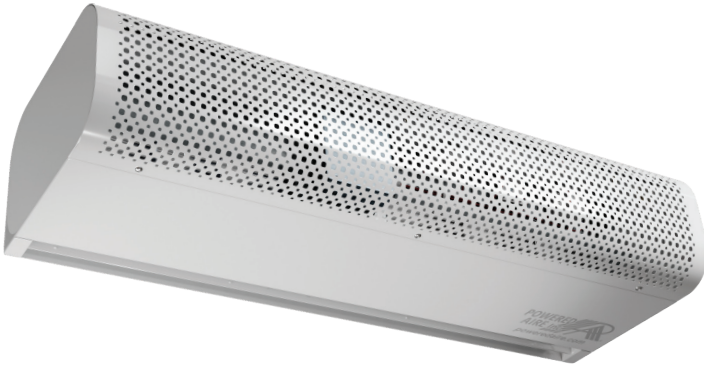


# QUICKSHIP

by **Powered Aire**

**Need it now? Order Today and get expedited service on stocked units that are pre-built, pre-packaged, and ready to ship.**



**MADE  
IN THE  
USA**



Powered Aire's Quick-Ship air curtains merge aesthetics and performance into a fashionable, low-profile air curtains. These painted white units offer a stylish intake and a curved, contemporary silhouette, blending into a building's architectural design and layout while effectively creating a barrier that separates indoor and outdoor environments.

Each air curtain includes a roller/plunger auto door switch and wall mounting plate.

## Quick Facts

AVAILABLE IN  
WIDTHS OF  
**36" & 42"**

MAX INSTALL  
HEIGHT  
**10'**

MOTOR  
HORSEPOWER  
**1/5 HP**

TEMP. SEPARATION/  
INSECT CONTROL

Model	Nozzle Width (In.)	Max FPM @ Nozzle	Avg. Outlet Velocity (FPM)	Airflow Rate (CFM)	Outlet Velocity Uniformity	Power Rating (kW)	Number of Motors	Motor HP	Weight (lbs)	Activation
<b>QS-1-36W White Steel</b>	35	3262	1348	984	85%	0.28	1	1/5	53	roller/plunger
<b>QS-1-42W White Steel</b>	41	3269	1462	1243	85%	0.33	1	1/5	60	roller/plunger

Provide quantity for each unit.  
Multiple units can be purchased.

**QS 36"**

**Quantity**

**QS 42"**

**Quantity**

☐

Click here if including own purchase order and attach to email along with this form

Name:

PO Number (optional):

Email:

Delivery

Address for

Units:

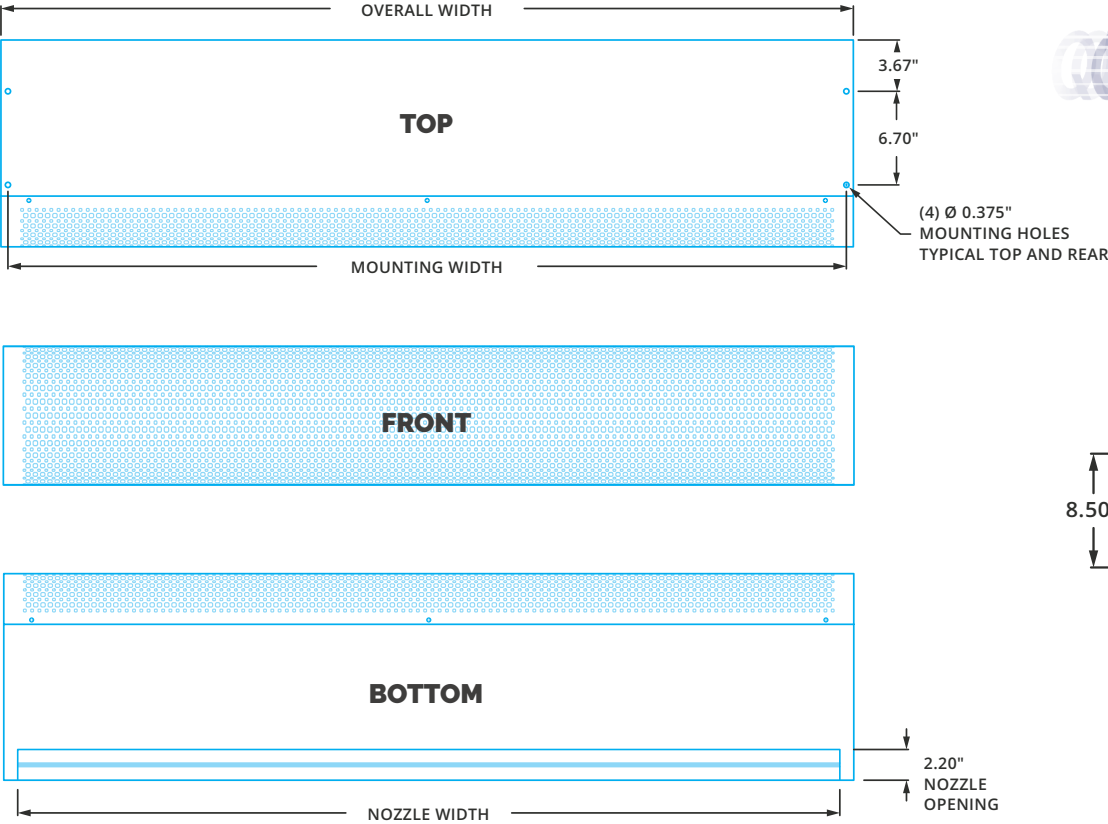
Phone:

Notes/  
Questions:

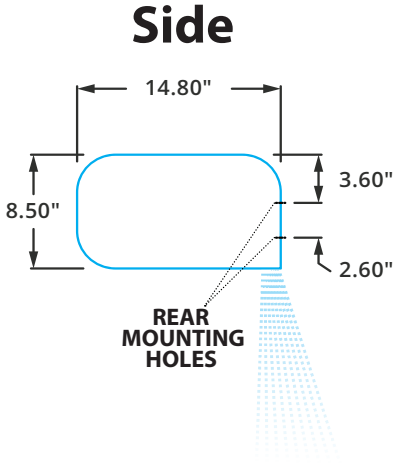
**To send form, simply complete first page and save to computer before attaching to email and mailing to: [info@PoweredAire.com](mailto:info@PoweredAire.com)**



# DIMENSIONS AND PERFORMANCE DATA



**QUICKSHIP**



## QS | MECHANICAL INFORMATION

Model	Overall Width (in.)	Mounting Width (in.)	Nozzle Width (in.)
QS-1-36W - White Steel	37	36	35
QS-1-42W - White Steel	43	42	41

## QS | VELOCITY PROJECTION

Distance From Nozzle	40"	80"	120"	160"
QS-1-36W Core Velocity (fpm)	1048	784	677	603

## QS | SOUND LEVELS

Measured 10 ft. from unit in a free field based on a 1 motor unit	53 dBA
---	--------

## QS | SINGLE PHASE MOTOR OPTIONS

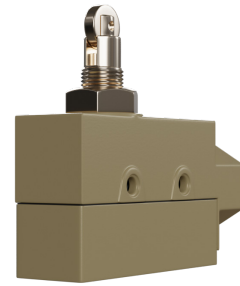
Voltages available	120
Amp draw per motor	4.4

# ROLLER/PLUNGER COMBO SWITCH

## Technical Data



### Alternate Views



### FEATURES AND KEY PRODUCT INFORMATION

- ▶ Used as a replacement for traditional roller and plunger limits switches
- ▶ Operating force can be applied perpendicular to the switch to serve as a plunger door switch
- ▶ Can also be used parallel to switch to serve as a roller door switch.
- ▶ Built-in miniature limit switch, strong aluminum cast shell, designed for water-proof applications

### CERTIFICATIONS/LISTINGS



**QUESTIONS & TECHNICAL SUPPORT AVAILABLE. CONTACT US DIRECTLY:**

**Phone Support**  
1-888-321-Aire (2473)

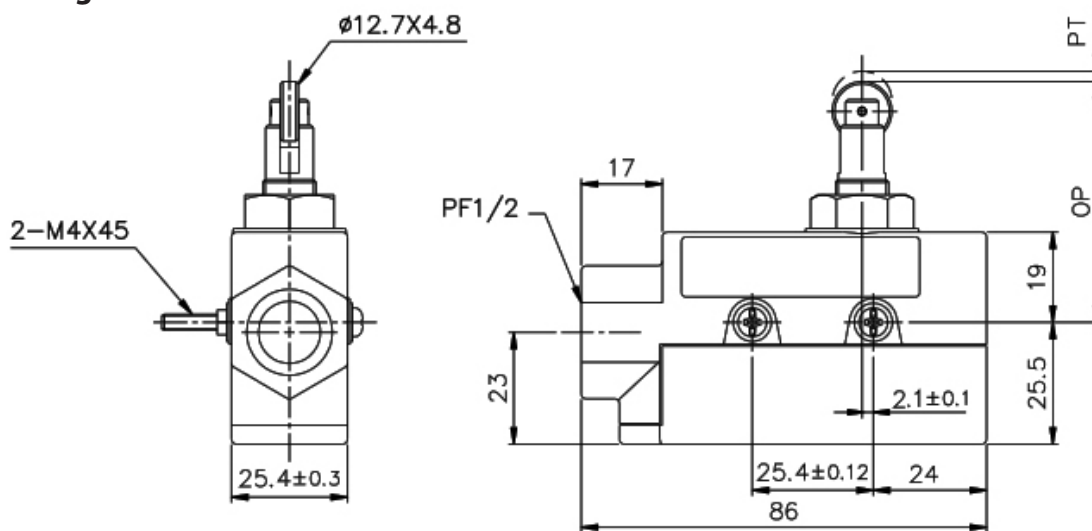
**Email Support & Service**  
[CustomerService@PoweredAire.com](mailto:CustomerService@PoweredAire.com)

**Sales Questions**  
[sales@PoweredAire.com](mailto:sales@PoweredAire.com)

# ROLLER/PLUNGER COMBO SWITCH

## Technical Data

### Product Drawing



Type	
OF max.	350g
RF min.	114g
PT max.	0.5mm
OT min.	3.6mm
MD max.	0.05mm
OP	$49.7 \pm 1$ mm
Degree of Protection	IP65

Characteristics	
Operating speed	0.01mm to 1m/sec
Operating frequency	Mechanically: 240 operations/min Electrically: 20 operations/min
Contact resistance	15m max. (initial)
Insulation resistance	100M max.(at 500 VDC)
Dielectric strength	1,000 VAC, 50/60Hz, for 1 minute between non-continuous terminals; 2,000 VAC, 50/60HZ, for 1 minute between current-carrying part and ground
Vibration	Mechanical durability: 10 to 55Hz, 1.5mm double amplitude
Shock	Mechanical durability: approx. 1,000m/sec (approx. 100G's) Malfunction durability: Approx 300m/sec (approx. 30G's)
Ambient temperature	-15°C to +80° C
Humidity	95% RH max.
Service life	Mechanically: 20,000,000 operations min. Electrically: 500,000 operations min.

**QUESTIONS & TECHNICAL SUPPORT AVAILABLE. CONTACT US DIRECTLY**

**Phone Support**  
1-888-321-Aire (2473)

**Email Support & Service**  
[CustomerService@PoweredAire.com](mailto:CustomerService@PoweredAire.com)

**Sales Questions**  
[Sales@PoweredAire.com](mailto:Sales@PoweredAire.com)

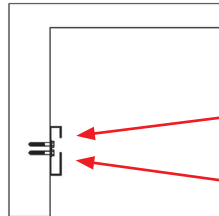
# 123 WALL MOUNTING PLATE

## QUICK AND EASY INSTALLATION



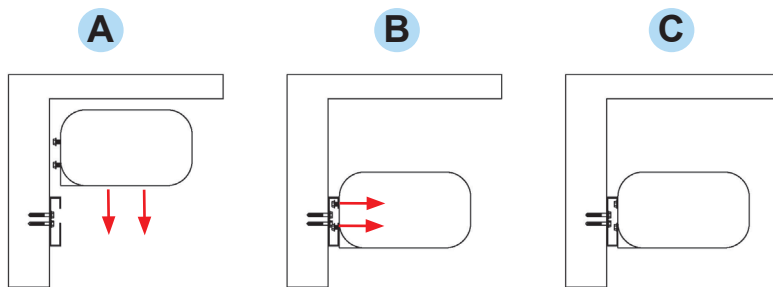
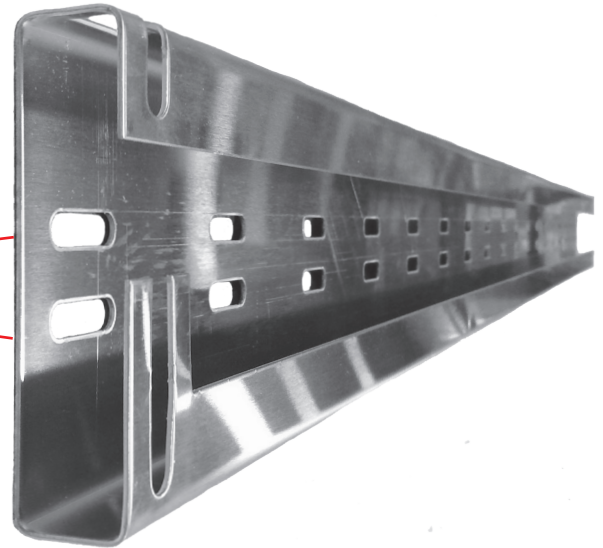
### Step 1

3/8" mounting bolts (supplied) are threaded into the holes located in all four corners of the back side of the air curtain, leaving 1/2" of the bolts exposed.



### Step 2

Universal mounting slots are used to lag the bracket to the wall (bolts by others).



### Step 3

- A** The air curtain is then lifted onto the bracket so that the exposed bolt heads slip down into the notches at the top and bottom of both ends of the bracket.
- B** The four bolts are tightened in place so that the air curtain fits snugly against the bracket.
- C** The installation is complete.

Compatible with Powered  
Aire Model QS Air Curtains

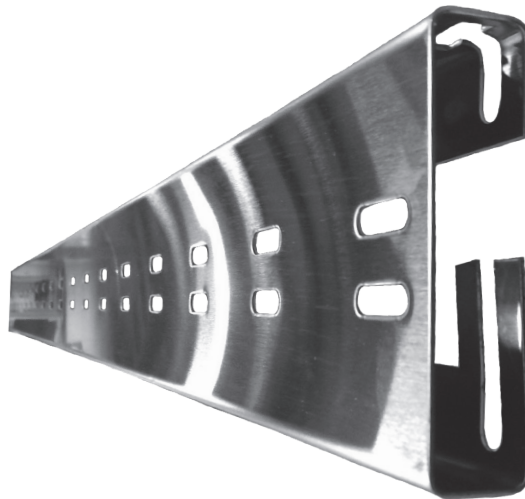
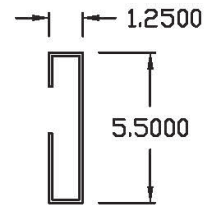
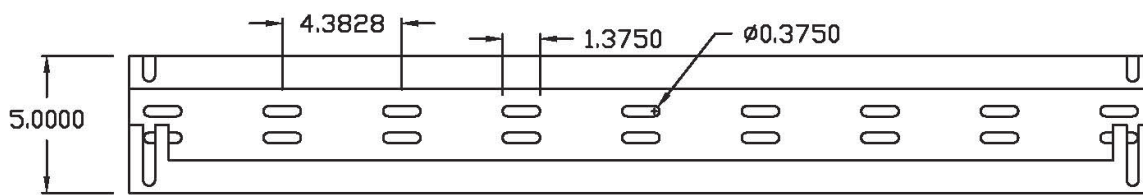
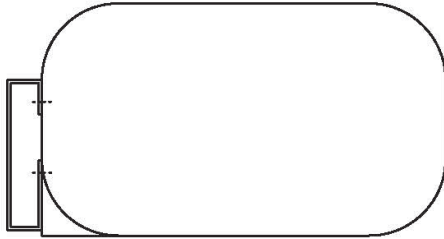


QUESTIONS & TECHNICAL SUPPORT AVAILABLE. CONTACT US DIRECTLY

**Phone Support**  
1-888-321-Aire (2473)

**Email Support & Service**  
[CustomerService@PoweredAire.com](mailto:CustomerService@PoweredAire.com)

**Sales Questions**  
[sales@PoweredAire.com](mailto:sales@PoweredAire.com)



QUESTIONS & TECHNICAL SUPPORT AVAILABLE. CONTACT US DIRECTLY

Phone Support  
1-888-321-Aire (2473)

Email Support & Service  
[CustomerService@PoweredAire.com](mailto:CustomerService@PoweredAire.com)

Sales Questions  
[sales@PoweredAire.com](mailto:sales@PoweredAire.com)