

► TFD | PERFORMANCE

TFD | Performance Table

MODEL	Nozzle Width (in.)	Max. FPM at Nozzle	Avg. FPM	Max. CFM	CFM at Nozzle	Outlet Velocity Uniformity	Number of Motors	Motor HP	Weight (lbs)
TFD-1-36	36	4800	4047	4214	3541	95%	1	1.5	119
TFD-1-48	48	4800	3048	4232	3556	93%	1	1.5	152
TFD-1-60	60	4800	2478	4301	3614	92%	1	1.5	188
TFD-2-72	72	4800	4047	8426	7082	95%	2	1.5	256
TFD-2-84	84	4800	3476	8445	7097	93%	2	1.5	290
TFD-2-96	96	4800	3048	8463	7112	92%	2	1.5	316
TFD-2-108	108	4800	2731	8532	7170	91%	2	1.5	342
TFD-3-108	108	4800	4046	12641	10623	95%	3	1.5	378
TFD-3-120	120	4800	3647	12659	10638	94%	3	1.5	420
TFD-3-132	132	4800	3320	12677	10653	95%	3	1.5	489
TFD-4-144	144	4800	4047	16855	14164	95%	4	1.5	509
TFD-4-156	156	4800	3740	16873	14179	94%	4	1.5	522
TFD-4-168	168	4800	3476	16891	14194	95%	4	1.5	534



- For a unit longer than 14 feet, consult factory.
- For Top Intake, consult factory.

TFD | Sound Levels

High Speed

66 dBA

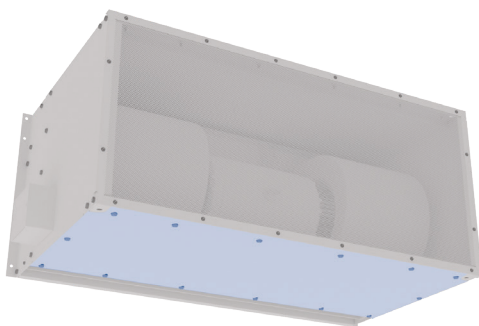
Measured 10 ft. from unit in a free field based on a 1 motor unit

TFD | Single Phase Motor Options

Voltages available	120	208	240	480	575
Amp draw per motor	14.6	7.3	7.3	3.5	2.6

TFD | Three Phase Motor Options

Voltages available	120	208	240	480	575
Amp draw per motor	NA	4.8	4.8	2.6	1.9



Performance Highlight

The TFD has top and bottom access panels to replace or service motors or blowers without lowering entire unit or bottom half of unit. With hot water and steam heat these access panels enable service to the unit without removing the coils.