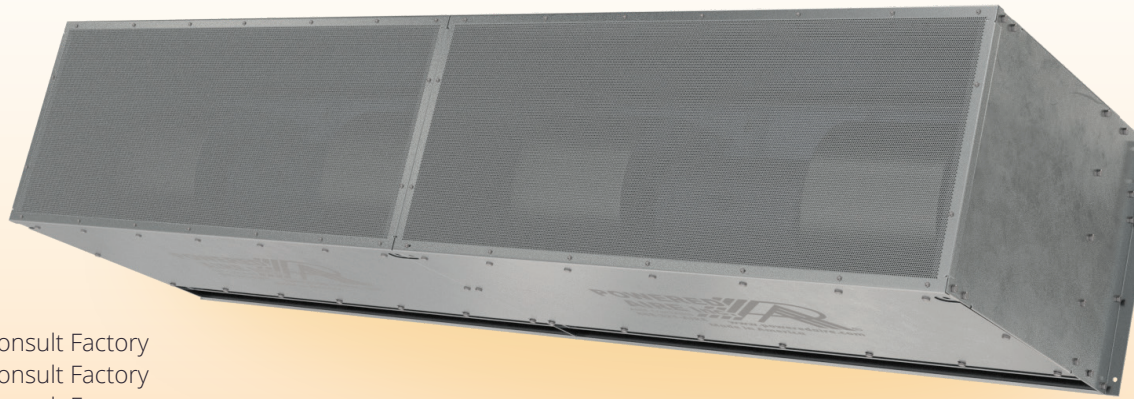




BPA



BPA (Big Powered Aire) is recommended for doors up to 30 feet high. The BPA has top and bottom access panels to replace or service motors or blowers without lowering entire unit or bottom half of unit.



OPTIONS

HEATING

- Hot Water Consult Factory
- Steam Consult Factory
- Indirect Gas Consult Factory

AT A GLANCE

Single Incremental Widths

5' to 20'

Max Installation Height

30'

Heavy Duty Motors

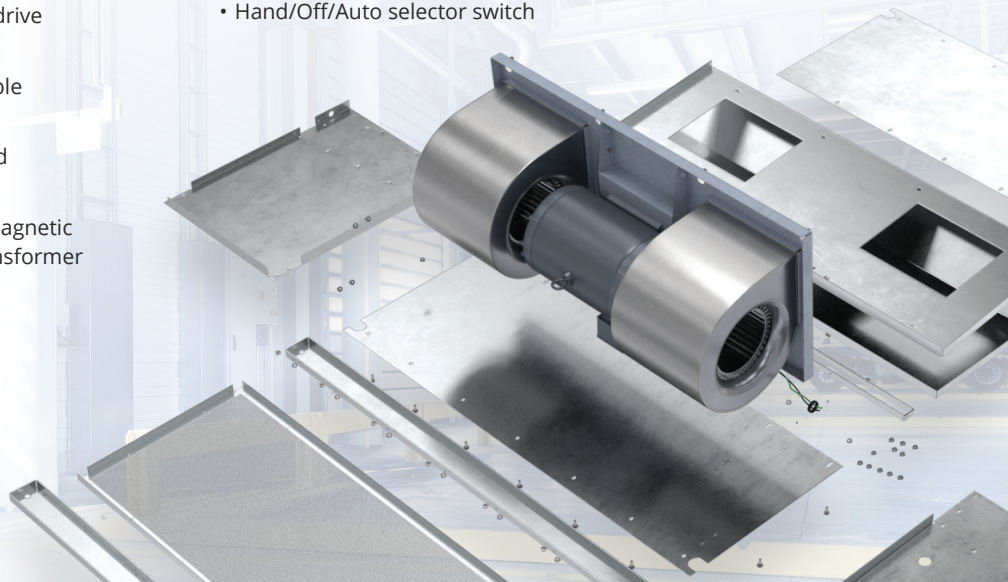
7.5 HP

KEY DESIGN FEATURES

- Outer cabinet constructed of 16-gauge 304 stainless steel with #3 finish
- 7.5 HP TEAO (Totally Enclosed Air Over) direct-drive single-speed motor(s)
- High-efficiency discharge plenum with adjustable air foil vane (+/-20°)
- Top and bottom access panels for servicing and removal of motor-blower assembly
- NEMA 12 control panel with factory installed magnetic motor starter, overload relays, and control transformer

RECOMMENDED CONTROLS

- Activation by 24V magnetic door switch
- Toggle disconnect switch
- Hand/Off/Auto selector switch



► BPA | PERFORMANCE

BPA | Performance Table

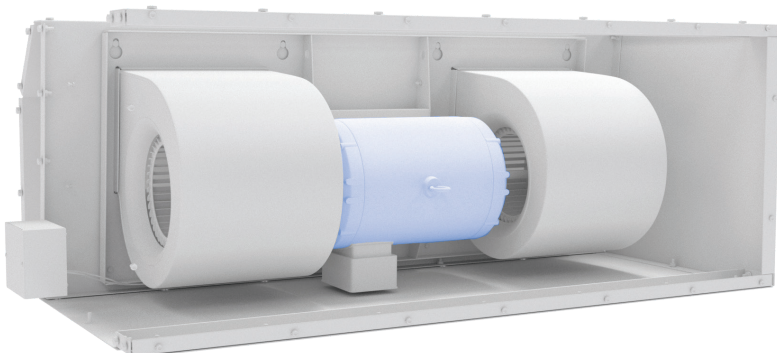
MODEL	Door Width (ft.)	Nozzle Width (in.)	Max. FPM at Nozzle	Max. CFM at Nozzle	Avg. FPM at Nozzle	CFM at Nozzle	Outlet Velocity Uniformity	Number of Motors	Motor HP	Weight (lbs)
BPA-1-60	5	60	5950	12901	3975	9724	94%	1	7.5	466
BPA-1-72	6	72	5950	16710	4296	12030	94%	1	7.5	490
BPA-1-84	7	84	5950	17500	3995	13050	92%	1	7.5	530
BPA-2-120	10	120	5950	25802	4388	20475	94%	2	7.5	903
BPA-2-132	11	132	5950	27678	4082	20956	95%	2	7.5	930
BPA-2-144	12	144	5950	31058	4449	24915	95%	2	7.5	950
BPA-2-156	13	156	5950	33605	4341	26335	92%	2	7.5	998
BPA-2-168	14	168	5950	36155	4541	29670	92%	2	7.5	1035
BPA-3-180	15	180	5950	38703	4272	29905	94%	3	7.5	1343
BPA-3-192	16	192	5950	39435	4063	30335	95%	3	7.5	1360
BPA-3-204	17	204	5950	40448	3834	30420	94%	3	7.5	1372
BPA-3-216	18	216	5950	41405	3803	31948	95%	3	7.5	1407
BPA-3-228	19	228	5950	49055	4153	36827	94%	3	7.5	1460
BPA-3-240	20	240	5950	51604	4056	37856	92%	3	7.5	1505
BPA-4-240	20	240	5950	55067	4309	40217	95%	4	7.5	1800

BPA | Sound Levels

High Speed 73 dBA Measured 10 ft. from unit in a free field based on a 1 motor unit

BPA | Amp Draw and Breaker Options

Model/Number of Motors	208-230V Amp Draw (Breaker size)	240V Amp Draw (Breaker size)	480V Amp Draw (Breaker size)	575V Amp Draw (Breaker size)
BPA-1-60, 72, 84	26.8A (35)	23.2A (30)	11.6A (15)	8.5A (15)
BPA-2-120, 132, 144, 156, 168	53.6A (70)	46.4A (60)	23.2A (30)	17.0A (25)
BPA-3-180, 192, 204, 216, 228, 240	80.4A (110)	69.6A (90)	34.8A (45)	25.5A (35)
BPA-4-240	107.2A (150)	92.8A (125)	46.4A (60)	34.0A (45)



Performance Highlight

Totally enclosed, air over (TEAO) motors are constructed with a dust-tight cover and an aerodynamic body. They are efficient at running and are cooled by the air flow of the blower which it is driving.

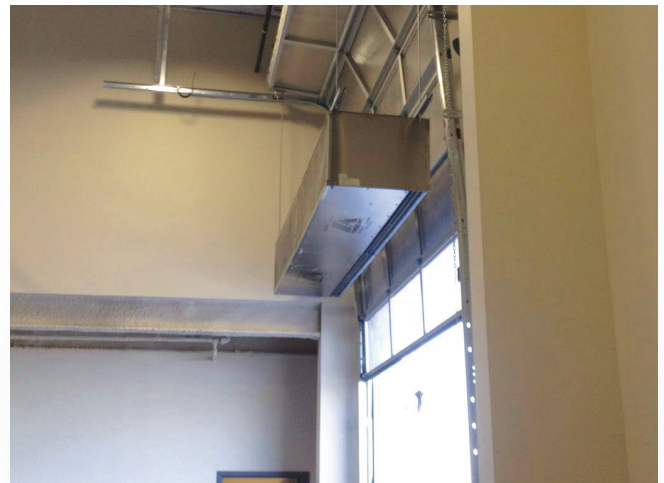
► BPA | MECHANICAL DETAILS

BPA | Mechanical Information Table

MODEL	Overall Width (in.)	Nozzle Width (in.)	Mounting Width Rear (in.)	Mounting Width Top (in.)
BPA-1-60	63	60	61.5	59
BPA-1-72	75	72	73.5	71
BPA-1-84	87	84	85.5	83
BPA-2-120	123.12	120.12	121.62	119.12
BPA-2-132	135.12	132.12	133.62	131.12
BPA-2-144	147.12	144.12	145.62	143.12
BPA-2-156	159.12	156.12	157.62	155.12
BPA-2-168	171.12	168.12	169.62	167.12
BPA-3-180	183.24	180.24	181.74	179.24
BPA-3-192	195.24	192.24	193.74	191.24
BPA-3-204	207.24	204.24	205.74	203.24
BPA-3-216	219.24	216.24	217.74	215.24
BPA-3-228	231.24	228.24	229.74	227.24
BPA-3-240	243.24	240.24	241.74	239.24
BPA-4-240	243.36	240.36	241.86	239.36

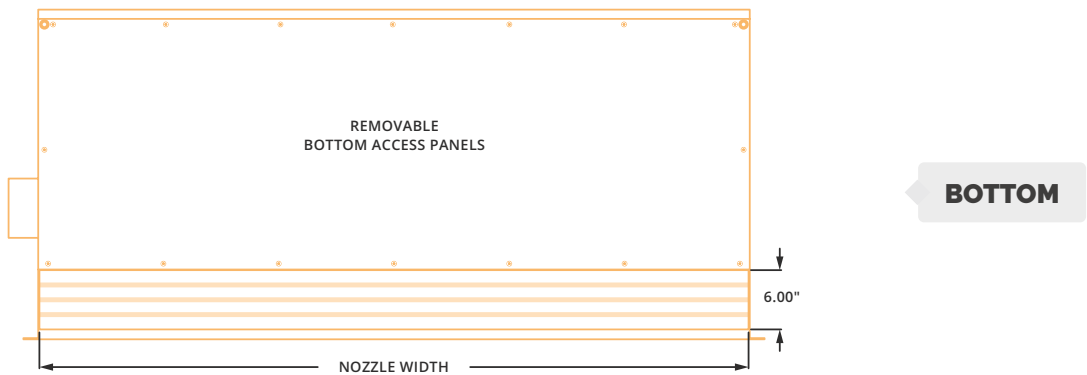
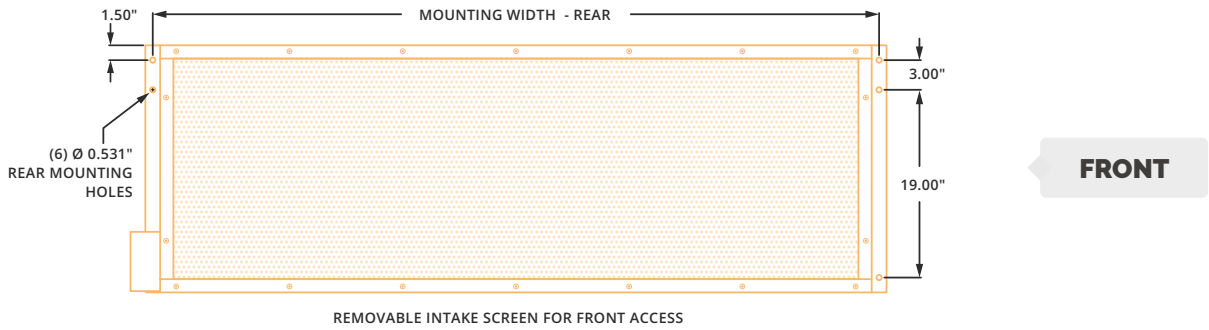
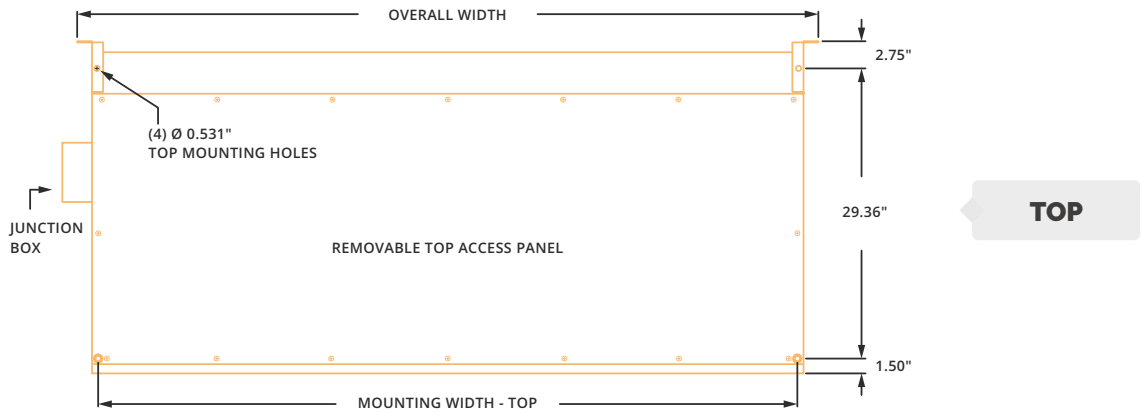
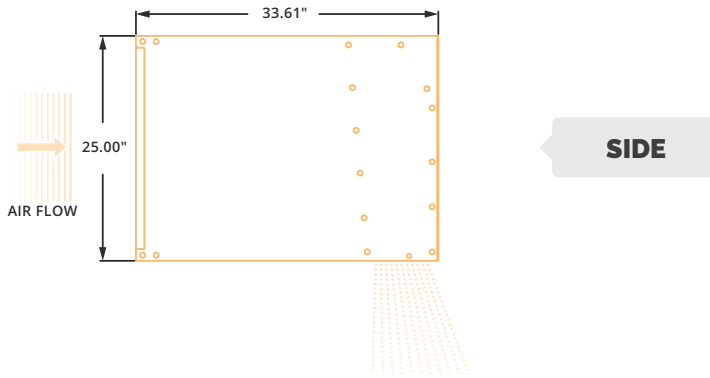


Model BPA | Brackets with Strut



Model BPA | Top Mount (Threaded Rod)

► BPA | MECHANICAL DRAWINGS



► BPA | INSTALLATION

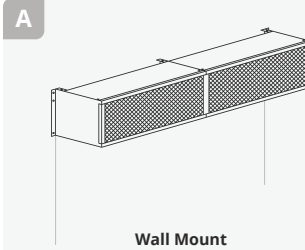


NOTE

The air curtain should be mounted as close to the door header/opening as possible for maximum performance. For every one inch the bottom of the air curtain is mounted above the door header, the back side of the air curtain should be moved away from the wall ¼ inch.

A WALL MOUNT

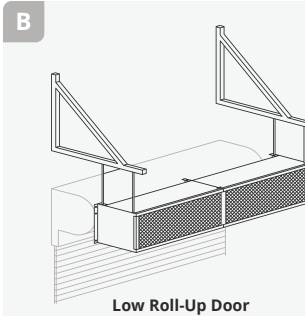
Rear flanges of air curtain have six holes, for six ¼ inch bolts or lags with washers. When wall mounting use all six holes.



B MOUNTING BRACKETS

Mounting brackets (also called knee, angle or L-brackets) can be flush to the wall or constructed to account for a projection from the wall. For proper size brackets measure standoff distance from wall to back of where air curtain will be.

If required, angle iron or steel tubing can be attached to the top of the air curtain, typically one foot longer at each end, to reach brackets that are mounted outside of the door system.



C TOP MOUNT

Unit has four 17/32 holes for installing one end of 1/2 inch threaded rods. The other ends of the threaded rods can be attached to the ceiling. Washers or locknuts are recommended. Mounting structure should be of sufficient strength to hold air curtain, and hardware (supplied by others) should be of sufficient strength and quality to support the unit safely. Additional mounting holes are provided on larger units for buildings where structural support is not adequate for supporting the air curtain from ends only.

*Powered Aire does not supply threaded rods.

