



CED-HW



CED-ST

CED-HW/ST



CED-HW/ST (hot water or steam) heated air curtains are designed for high traffic retail facilities where employee and customer comfort are critical. The CED effectively blocks cold outdoor air from entering while providing a heated barrier that helps keep the area by the door warm and free of outside drafts. The CED-HW/ST model has a gentle airflow and its unique plenum design make it one of the quietest air curtains in the industry.

When requesting a quote for a Hot Water/Steam heated air curtain, please provide:

- Specifics of water/steam entering and exiting the air curtain.
- Location for water/steam supplies and returns (both on one side or one each side)

OPTIONS

HEATING

- Unheatedpg 67
- Electric.....pg 69

FILTER

- 1" Cleanable



AT A GLANCE

Single Incremental Widths

3' to 12'

Max Installation Height

11'

Heavy Duty Motors

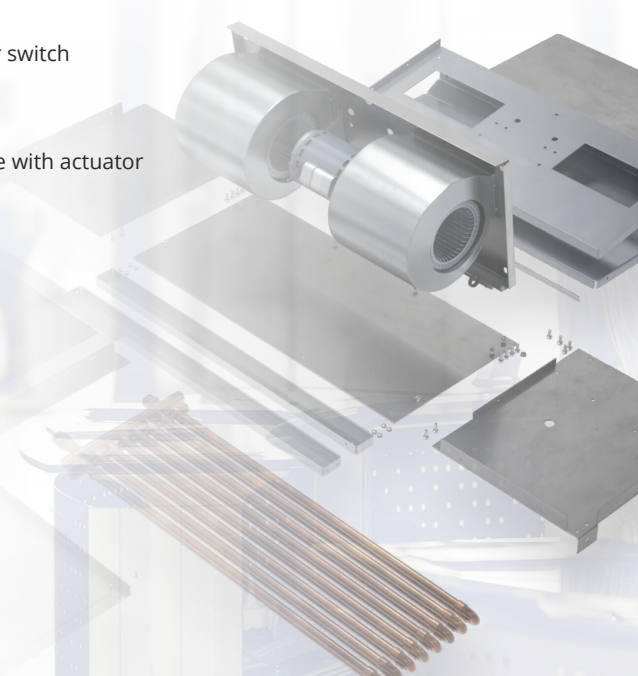
1/2 HP

KEY DESIGN FEATURES

- Outer cabinet constructed of 18-gauge 304 stainless steel with #3 finish
- 1/2 HP ODP (Open Drip Proof) direct-drive dual-speed motor(s)
- High-efficiency discharge plenum with adjustable air foil vane (+/-20°)
- Top and bottom access panels for servicing and removal of motor-blower assembly
- NEMA 12 control panel
- Coil made to AHRI Standard 410
- Hot water coil comprised of galvanized steel casing, 5/8" copper tube, aluminum fins, and same end supply/return connections
- Leak tested at 450 psi
- Single length hot water coils up to 14 ft
- Single length steam coils up to 10 ft
- Custom coil selections available (consult factory)

RECOMMENDED CONTROLS & ACCESSORIES

- Activation by 24V magnetic door switch
- Toggle disconnect switch
- SmartTouch Pro controller
- Hot water or steam control valve with actuator



► CED-HW/ST | PERFORMANCE

CED-HW | Performance Table

Model	Nozzle Width	Max. FPM at Nozzle	Avg. FPM	CFM at Nozzle	Outlet Velocity Uniformity	Number of Motors	Motor HP	Hot Water		Weight (lbs)
								mbtu/Hour	Temp. Rise (°F)	
CED-1-36HW	36	3000	1205	892	88	1	1/2	34.6	35.8	104
CED-1-42HW	42	3000	1209	1040	90	1	1/2	40.0	35.4	114
CED-1-48HW	48	3000	1131	1108	89	1	1/2	41.8	34.7	124
CED-1-60HW	60	3000	998	1227	79	1	1/2	47.7	35.8	143
CED-2-72HW	72	3000	1205	1784	88	2	1/2	70.5	36.4	200
CED-2-84HW	84	3000	1209	2080	90	2	1/2	78.5	34.8	226
CED-2-96HW	96	3000	1131	2216	89	2	1/2	87.0	36.2	246
CED-3-108HW	108	3000	1205	2676	88	3	1/2	103.1	35.5	295
CED-3-120HW	120	3000	1176	2892	88	3	1/2	112.4	35.8	328
CED-3-132HW	132	3000	1111	3011	79	3	1/2	113.9	34.9	344
CED-4-144HW	144	3000	1205	3568	88	4	1/2	99.6	35.7	399
CED-4-156HW	156	3000	1208	3864	88	4	1/2	142.8	34.0	422
CED-4-168HW	168	3000	1209	4160	90	4	1/2	154.2	34.2	446

CED-ST | Performance Table

Model	Nozzle Width	Max. FPM at Nozzle	Avg. FPM	CFM at Nozzle	Outlet Velocity Uniformity	Number of Motors	Motor HP	Steam		Weight (lbs)
								mbtu/Hour	Temp. Rise (°F)	
CED-1-36ST	36	3000	1205	892	88	1	1/2	33.0	34.2	125
CED-1-42ST	42	3000	1209	1040	90	1	1/2	39.7	35.2	138
CED-1-48ST	48	3000	1131	1108	89	1	1/2	44.5	37.1	151
CED-1-60ST	60	3000	998	1227	79	1	1/2	48.0	36.2	175
CED-2-72ST	72	3000	1205	1784	88	2	1/2	70.6	36.5	238
CED-2-84ST	84	3000	1209	2080	90	2	1/2	82.5	36.7	270
CED-2-96ST	96	3000	1131	2216	89	2	1/2	83.4	34.8	295
CED-3-108ST	108	3000	1205	2676	88	3	1/2	106.3	36.7	351
CED-3-120ST	120	3000	1176	2892	88	3	1/2	115.4	36.8	389
CED-3-132ST	132	3000	1111	3011	79	3	1/2	114.1	35.0	411
CED-4-144ST	144	3000	1205	3568	88	4	1/2	141.4	36.6	471

- ! For a unit over 12 feet long, consult factory.
- Performance values based off AMCA certified values of unheated CED air curtain.

CED-HW/ST | Sound Levels

High Speed	53 dBA	Low Speed	51 dBA	Measured 10 ft. from unit in a free field based on a 1 motor unit
-------------------	--------	------------------	--------	---

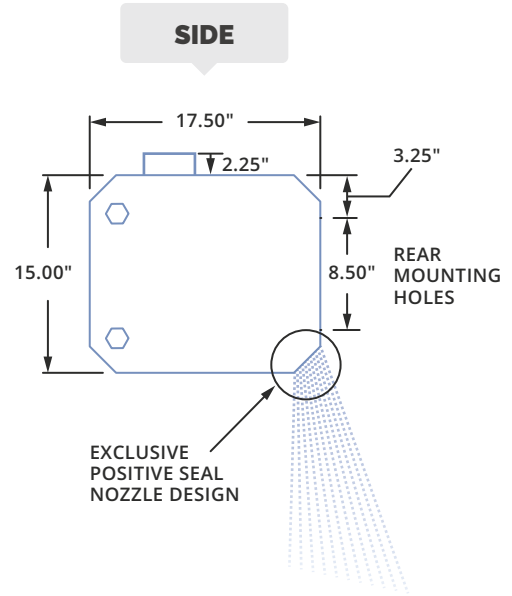
CED-HW-ST | Amp Draw and Breaker Options

Motors	120V Amp Draw (Breaker size)	208-230V Amp Draw (Breaker size)	480V Amp Draw (Breaker size)	575V Amp Draw (Breaker size)
CED-HWST-1-36, 42, 48, 60	2.5A (15)	1.4A (15)	0.7A (15)	0.6A (15)
CED-HWST-2-72, 84, 96	5.0A (15)	2.8A (15)	1.4A (15)	1.2A (15)
CED-HWST-3-108, 120, 132	7.5A (15)	4.2A (15)	2.1A (15)	1.8A (15)
CED-HWST-4-144, 156, 168	10.0A (15)	5.6A (10)	2.8A (15)	2.4A (15)

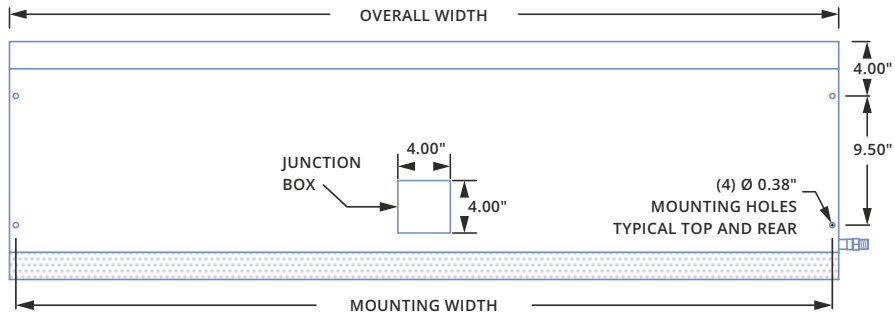
► CED-HW/ST | MECHANICAL DETAILS & DRAWINGS

CED-HW/ST | Mechanical Information Table

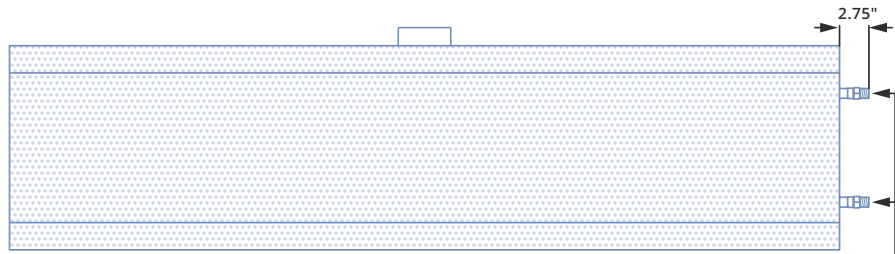
MODEL	Overall Width (in.)	Nozzle Width (in.)	Mounting Width (in.)
CED-1-36HW/ST	37	36	36.06
CED-1-42HW/ST	43	42	42.06
CED-1-48HW/ST	49	48	48.06
CED-1-60HW/ST	61	60	60.06
CED-2-72HW/ST	73	72	72.06
CED-2-84HW/ST	85	84	84.06
CED-2-96HW/ST	97	96	96.06
CED-3-108HW/ST	109	108	108.06
CED-3-120HW/ST	119	118	118.06
CED-3-132HW/ST	134	133	133.06
CED-4-144HW/ST	146	145	145.06
CED-4-156HW/ST	158	157	157.06
CED-4-168HW/ST	170	169	169.06



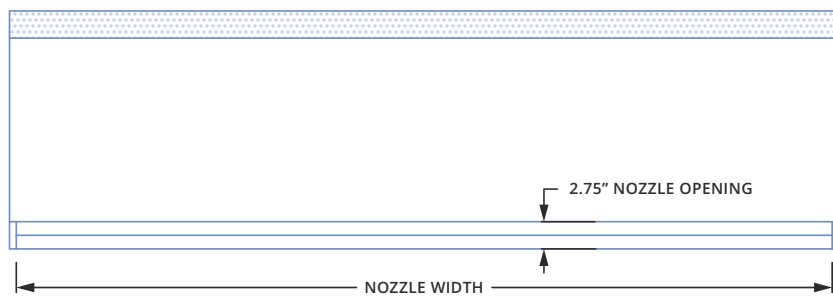
TOP



FRONT



BOTTOM



► CED-HW/ST | INSTALLATION

NOTE: The air curtain should be mounted as close to the door header/opening as possible for maximum performance. For every one inch the bottom of the air curtain is mounted above the door header, the back side of the air curtain should be moved away from the wall ¼ inch.

A WALL MOUNT

Back side of air curtain has 4 mounting holes capable of accepting four 3/8 mounting bolts or lags, with washers (use these holes only for mounting). Mark and pre-drill mounting surface accurately. A long extension and ratchet will negate the need to remove the motor-blower plate when installing.

Mounting bolts or lags of sufficient size and strength should be installed and tightened through the four 7/8 inch holes in motor/blower plate.

If motor/blower plate has to be removed, the junction box inside the unit must be removed along with any electrical switches that may be in the way.

The electrical switches have a lever that slides in one direction to release the switch contacts from the switch body. All wires will then stay intact for easy installation when replacing the blower plate.

Remove 7/16 whizlock nuts holding plate in place, and slide plate out, rotating top portion of plate so it comes out first. Remember when installing plate to put bottom of plate in first and rotate top in last.

B WALL MOUNT EXTENSION PLATES

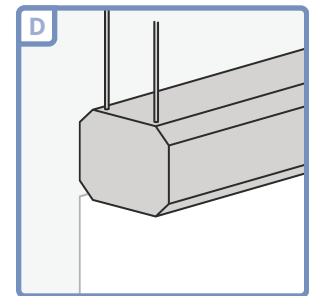
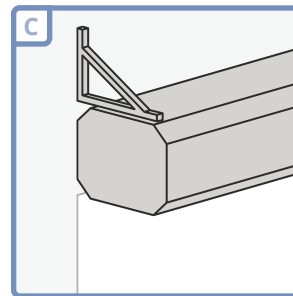
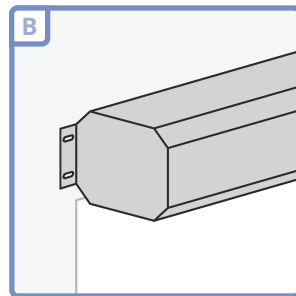
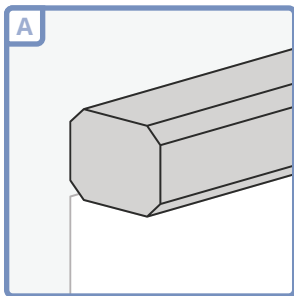
Extension plates bolt onto the back of the unit, utilizing the 4 original mounting holes. Brackets have elongated mounting slots that extend the mounting width by 2-1/2 to 3-1/2 inches.

C BRACKETS

Mounting brackets (also called knee, angle or L-brackets) can be flush to the wall or constructed to account for a projection from the wall. For proper size brackets measure standoff distance from wall to back of where air curtain will be.

D TOP MOUNT

Unit has four 3/8-16 threaded inserts for installing one end of threaded rods. The other ends of the threaded rods can be attached to the ceiling. Threaded rod should not extend more than 3/4 inch into air curtain.



MB123 QUICK MOUNTING PLATE

Optional Installation (See page 240 for more detail)

Step 1

Attach top mounting bracket to back of air curtain using the upper mounting holes on back of unit.

Step 2

Attach the mounting bracket to the wall. Make sure there is sufficient room between mounting plate and ceiling to mount air curtain.

Step 3

Place air curtain over mounting bracket. The top and bottom brackets will lock into place supporting the weight of the air curtain. Attach the bottom bracket to the air curtain using the lower mounting holes.



When mounted, bottom of air curtain is to be flush with bottom of the door header.

