



CHA-HW



CHA-ST

v5.0.0

CHA-HW/ST



ABOVE CEILING

OPTIONS

HEATING

Unheatedpg 21
Electricpg 23

FILTER

½" Cleanable

GRILLE COLOR

The white grille is standard with this model. Consult factory for custom color or metal.



AT A GLANCE

Single Incremental Widths

3' to 12'

Max Installation Height

14'

Heavy Duty Motors

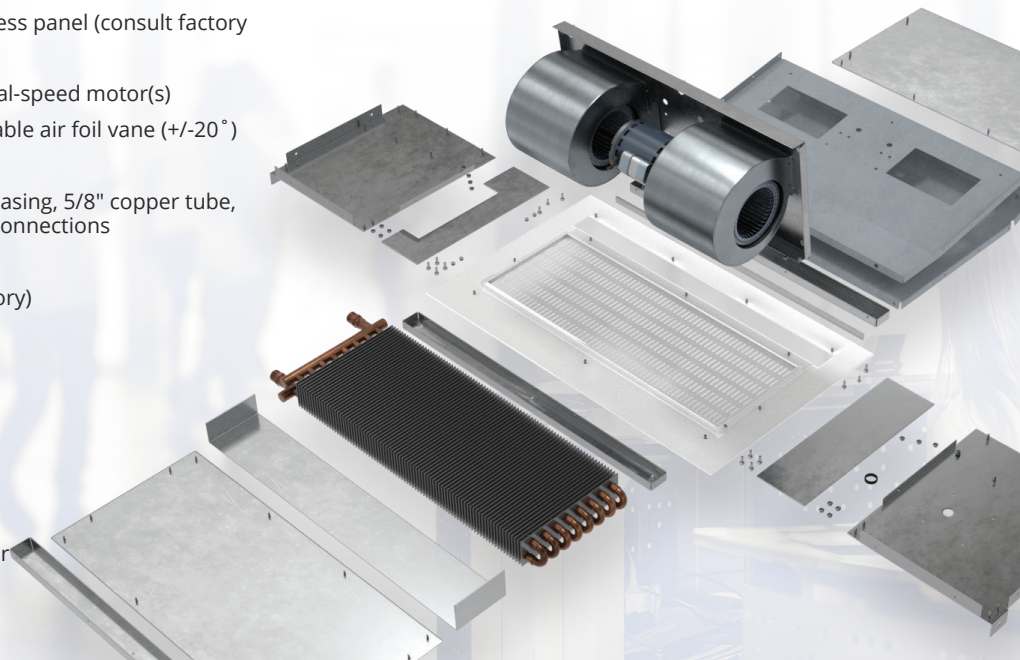
¾ HP

KEY DESIGN FEATURES

- White decorative intake grille with hinged access panel (consult factory for custom finishes)
- ¾ HP ODP (Open Drip Proof) direct-drive dual-speed motor(s)
- High-efficiency discharge plenum with adjustable air foil vane (+/-20°)
- Coil made to AHRI Standard 410
- Hot water coil comprised of galvanized steel casing, 5/8" copper tube, aluminum fins, and same end supply/return connections
- Leak tested at 450 psi
- Custom coil selections available (consult factory)

RECOMMENDED CONTROLS & ACCESSORIES

- Activation by 24V magnetic door switch
- Toggle disconnect switch
- SmartTouch Pro controller
- Hot water or steam control valve with actuator
- Filter (washable)



▶ CHA-HW/ST | PERFORMANCE

CHA-HW/ST | Performance Table

MODEL	Nozzle Width (in.)			Outlet Velocity Uniformity	Number of Motors	Motor HP	Hot Water		Steam		Weight (lbs)
		FPM	CFM				mbtu / Hour	Temp. Rise (°F)	mbtu / Hour	Temp. Rise (°F)	
CHA-1-36HW/ST	36	2757	1268	91%	1	3/4	54.5	36.3	53	35.4	113
CHA-1-42HW/ST	48	2608	1521	91%	1	3/4	58	35.7	60.7	35.2	213.2
CHA-1-48HW/ST	48	2674	1765	91%	1	3/4	69.7	36.2	70.2	36.5	145
CHA-1-60HW/ST	60	2396	1845	73%	1	3/4	74	36.8	70.6	35.1	180
CHA-2-72HW/ST	72	2757	2356	91%	2	3/4	104.2	34.8	108.7	36.2	249
CHA-2-84HW/ST	84	2708	3033	91%	2	3/4	121.6	35.6	125.9	36.8	281
CHA-2-96HW/ST	96	2674	3530	91%	2	3/4	139	36.1	142.9	37.1	306
CHA-2-108HW/ST	108	2520	3610	73%	2	3/4	135.8	34.5	134.3	34.1	329
CHA-3-108HW/ST	108	2757	3804	91%	3	3/4	161.4	35.9	164.1	36.5	365
CHA-3-120HW/ST	120	2608	4121	73%	3	3/4	178.9	36.3	181.1	36.8	406
CHA-3-132HW/ST	132	2696	4798	91%	3	3/4	196.3	36.7	198	37	470
CHA-4-144HW/ST	144	2757	5072	91%	4	3/4	218.9	36.5	219.1	36.5	692

! For a unit over 12 feet long, consult factory. Heater data based on AMCA licensed values from unheated units.

CHA-HW/ST | Sound Levels

Normal speed 63 dBA Measured 10 ft. from unit in a free field based on a 1 motor unit

CHA-HW/ST | Amp Draw and Breaker Options

Motors	120V Amp Draw (Breaker size)	208-230V Amp Draw (Breaker size)	480V Amp Draw (Breaker size)	575V Amp Draw (Breaker size)
CHA-HWST-1-36, 42, 48, 60	8.0A (15)	3.6A (15)	2.0A (15)	1.5A (15)
CHA-HWST-2-72, 84, 96, 108	16.0A (25)	7.2A (15)	4.0A (15)	3.0A (15)
CHA-HWST-3-108, 120, 132	24.0A (35)	10.8A (15)	6.0A (15)	4.5A (15)
CHA-HWST-4-144	32.0A (45)	14.4A (20)	8.0A (15)	6.0A (15)

NOTE

When requesting a quote for a Hot Water/Steam heated air curtain, please provide:

- Specifics of water/steam entering and exiting the air curtain
- Location for water/steam supplies and returns (both on one side or one each side)

► CHA-HW/ST | MECHANICAL DETAILS & DRAWINGS

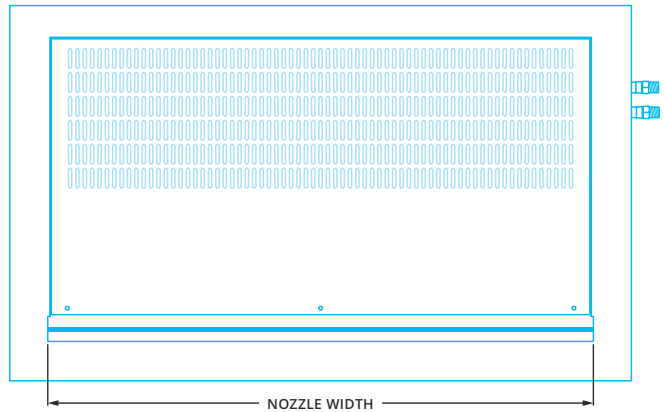
CHA-HW/ST | Mechanical Information Table

MODEL	Overall Width (in.)	Nozzle Width (in.)	Mounting Width (in.)
CHA-1-36HW/ST	39.8	36	38.3
CHA-1-42HW/ST	44.7	42	43.2
CHA-1-48HW/ST	51.8	48	50.3
CHA-1-60HW/ST	63.8	60	62.3
CHA-2-72HW/ST	75.8	72.07	74.3
CHA-2-84HW/ST	87.8	84.07	86.3
CHA-2-96HW/ST	100.6	96.07	99.1
CHA-2-108HW/ST	112.6	108.07	111.1
CHA-3-108HW/ST	112.6	108.15	111.1
CHA-3-120HW/ST	124.6	120.15	123.1
CHA-3-132HW/ST	136.6	132.15	135.1
CHA-4-144HW/ST	148.6	144.22	147.1



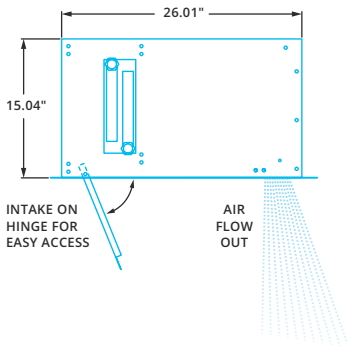
NOTE

1. Installer is responsible for structurally sound mounting of the unit.
2. Verify that overall dimensions will fit in the opening.
3. Size steam trap (provided by others) by 3x's the manufacturer's recommended size for satisfactory operation.
4. Coil connections are shown on right hand side, but they can be located on either right or left side of unit.

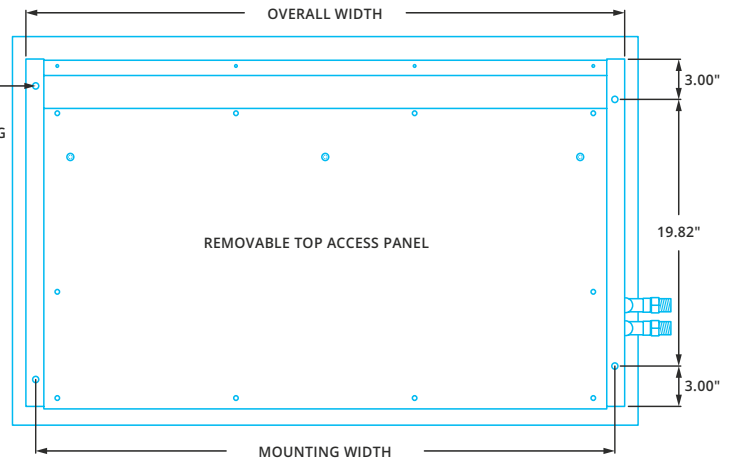


SIDE

BOTTOM

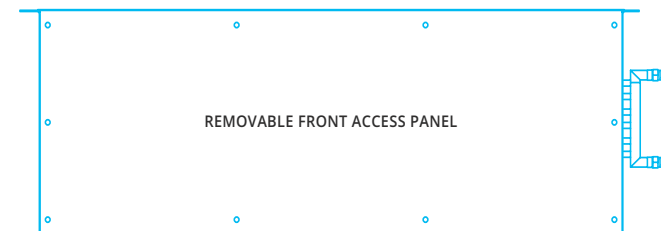


(4) Ø 0.469" TOP MOUNTING HOLES



TOP

FRONT



▶ CHA, CHA-E, CHA-HW/ST | INSTALLATION

! IMPORTANT

- ✓ Trained and experienced mechanic / electrician required.
- ✓ **WARNING:**
Risk of electrical shock, can cause injury or death: Disconnect all remote electrical supplies before servicing.
- ✓ Units must be field wired in accordance with all applicable local, state, provincial and national codes, including wire size and materials.

✍ NOTE

For every one inch the bottom of the air curtain is mounted above the door header, the back side of the air curtain should be moved away from the wall ¼ inch.

Unit has four 15/32 inch holes for installing one end of 7/16" threaded rods. The other ends of the threaded rods can be attached to the ceiling. Washers and lock washers or locknuts are recommended. Mounting structure should be of sufficient strength to hold air curtain, and hardware (supplied by others) should be of sufficient strength and quality to support the unit safely.



STEP 1

Remove intake/discharge grille from bottom of air curtain. If ceiling is already in place, determine where air curtain location will be and cut a rectangular hole in the ceiling. The hole will be 1 inch longer and wider than the bottom length and width of the air curtain without the intake/discharge grille.



STEP 2

Suspend air curtain using threaded rods so that the bottom of the unit is centered within the cut out in the ceiling. There will be a 1/2 inch gap around the air curtain. Mount the unit so that the bottom is flush with the ceiling.



STEP 3

Attach the intake/discharge grille to the bottom of the air curtain. The grille is larger than the air curtain to cover the gaps between the air curtain and ceiling.