



CLD



CLD-E



LIGHT DUTY

ABOVE CEILING



The Chameleon Light Duty (CLD) is specifically designed to be dropped into the ceiling above customer entry ways where a standard air curtain cannot be exposed. Like the CED, the Chameleon also has the least objectionable airflow.

## OPTIONS

### ELECTRIC HEAT

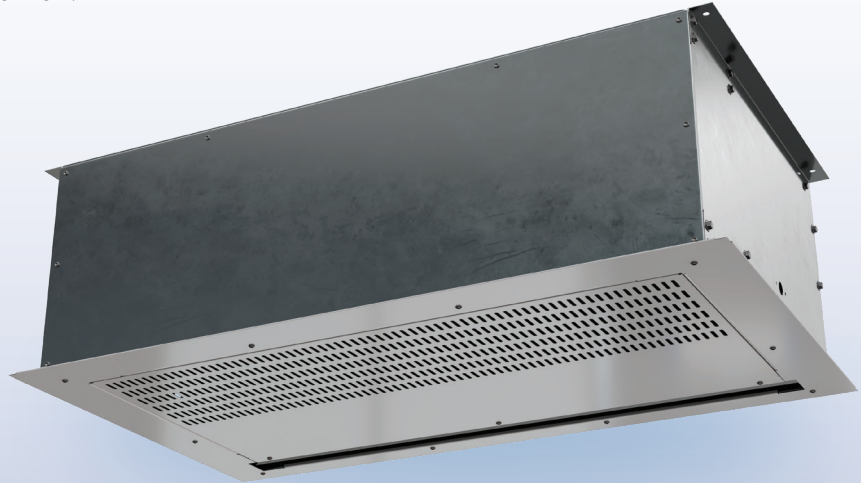
Electric . . . . . CLD-E  
Hot Water . . . . . pg 83  
Steam . . . . . pg 83

### FILTER

½" Cleanable

### CUSTOM GRILLES

The white grille is standard with this model.  
Consult factory for custom color or metal.



## AT A GLANCE

Single Incremental Widths

3' to 12'

Max Installation Height

11'

Heavy Duty Motors

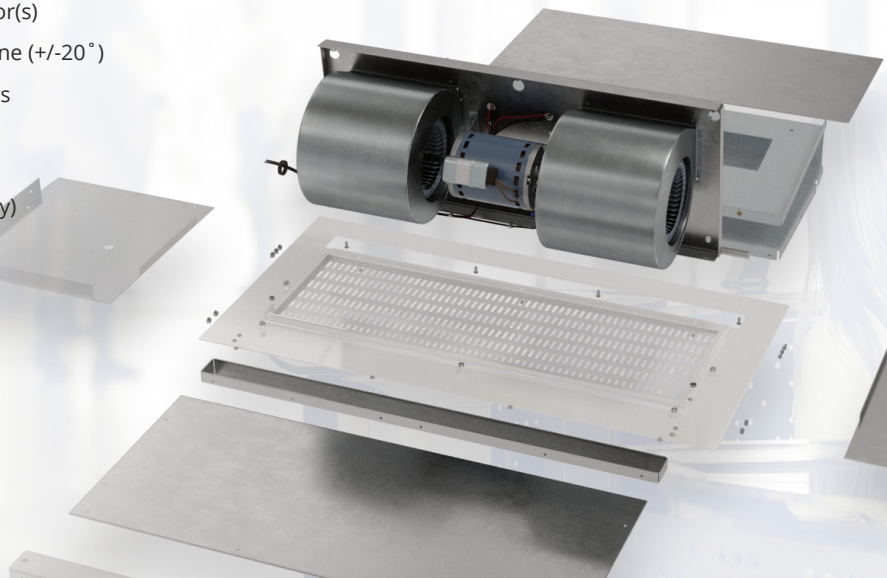
½ HP

### KEY DESIGN FEATURES

- White decorative intake grille with hinged access panel (consult factory for custom finishes)
- 1/2 HP ODP (Open Drip Proof) direct-drive dual-speed motor(s)
- High-efficiency discharge plenum with adjustable air foil vane (+/-20°)
- **Electric Only:** Factory mounted single-stage electric heaters
- **Electric Only:** Single point power connection available (see electrical table)
- **Electric Only:** Alternate heater kW available (consult factory)

### RECOMMENDED CONTROLS & ACCESSORIES

- Activation by 24V magnetic door switch
- Toggle disconnect switch
- SmartTouch Lite or Pro controller
- Filter (washable)



## ► CLD & CLD-E | PERFORMANCE

### CLD & CLD-E | Performance Table

MODEL	Nozzle Width (in.)	Max. FPM at Nozzle	Avg. FPM	CFM at Nozzle	Outlet Velocity Uniformity	Number of Motors	Motor HP	Weight (lbs) Unheated / Heated
CLD-1-36 (E)	36	3000	1205	892	88%	1	1/2	171 / 174
CLD-1-48 (E)	48	3000	1131	1108	89%	1	1/2	189 / 196
CLD-1-60 (E)	60	3000	998	1227	79%	1	1/2	220 / 224
CLD-2-72 (E)	72	3000	1205	1784	88%	2	1/2	342 / 348
CLD-2-84 (E)	84	3000	1209	2080	90%	2	1/2	355 / 365
CLD-2-96 (E)	96	3000	1131	2216	89%	2	1/2	370 / 379
CLD-3-108 (E)	108	3000	1205	2676	88%	3	1/2	513 / 522
CLD-3-120 (E)	120	3000	1176	2892	88%	3	1/2	530 / 547
CLD-3-132 (E)	132	3000	1111	3011	79%	3	1/2	545 / 559
CLD-4-144 (E)	144	3000	1205	3568	88%	4	1/2	684 / 696

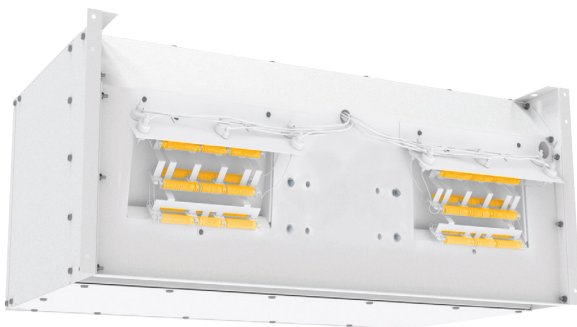
- ! For a unit over 12 feet long, or a non-standard electric heater kW, consult factory.
- Performance values based off AMCA certified values of unheated CED air curtain.

### CLD & CLD-E | Sound Levels

<b>High Speed</b>	53 dBA	<b>Low Speed</b>	51 dBA	Measured 10 ft. from unit in a free field based on a 1 motor unit
-------------------	--------	------------------	--------	---

### CLD | Amp Draw and Breaker Options

Motors	120V Amp Draw (Breaker size)	208-230V Amp Draw (Breaker size)	480V Amp Draw (Breaker size)	575V Amp Draw (Breaker size)
CLD-1-36, 42, 48, 60	2.5A (15)	1.4A (15)	0.7A (15)	0.6A (15)
CLD-2-72, 84, 96, 108	5.0A (15)	2.8A (15)	1.4A (15)	1.2A (15)
CLD-3-108, 120, 132	7.5A (15)	4.2A (15)	2.1A (15)	1.8A (15)
CLD-4-144	10.0A (15)	5.6A (10)	2.8A (15)	2.4A (15)



### Performance Highlight

Heating elements are mounted inside the plenum, on the discharge side of the blowers. Here, heat won't affect motor life and the heaters are protected from dust that would accumulate on them if they were mounted on the air intake.

# CLD-E | ELECTRICAL

## AMP Draw, Circuits & Breaker Size Table

ALL AMP DRAWS LISTED BELOW INCLUDE TOTAL DRAW (MOTOR AND HEATERS INCLUDED)

\* Single Point Power (SPP) includes branch fusing and may require remote control panel.

‡ High amp draws may be prohibitive. Reduced and custom kW available. Contact factory.

Models	AMP DRAW (Breaker Size)							
	kW	Temp Rise (°F)	208 / 1 / 60			240 / 1 / 60		
			Circuit 1	Circuit 2	SPP	Circuit 1	Circuit 2	SPP
CLD-1-36E / 48E / 60E	10.0	26	25.4A (35)	24.0A (35)	49.5A (70)	43.1A (60)	-	-
CLD-2-72E / 84E / 96E / 108E	20.0	29	‡	‡	‡	‡	‡	‡
CLD-3-108E / 120E / 132E	30.0	32	‡	‡	‡	‡	‡	‡
CLD-4-144E	40.0	36	‡	‡	‡	‡	‡	‡

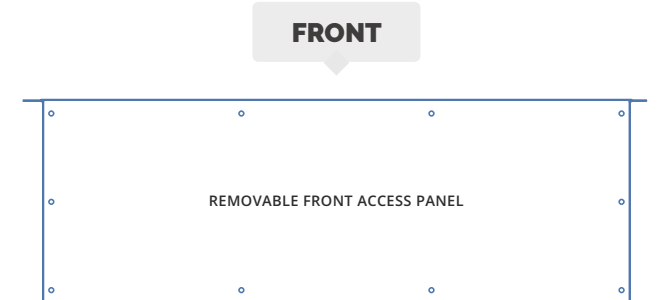
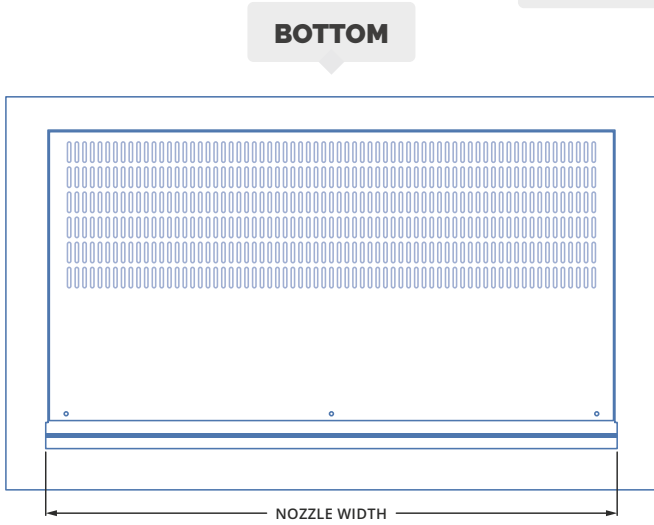
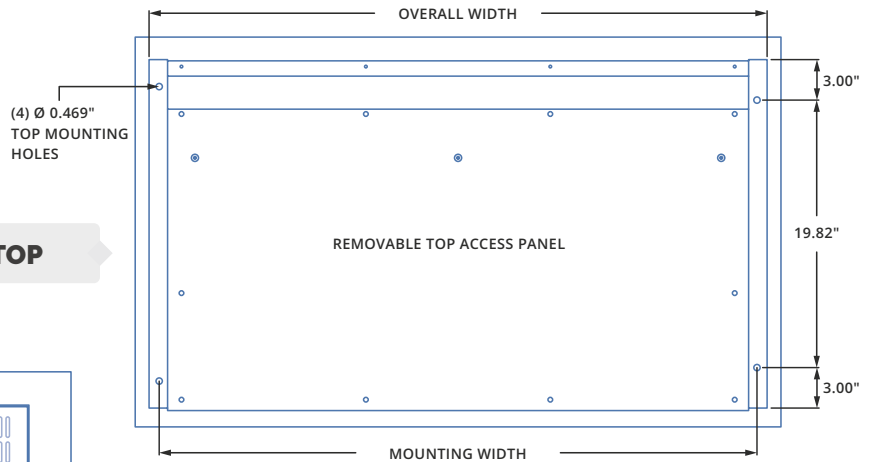
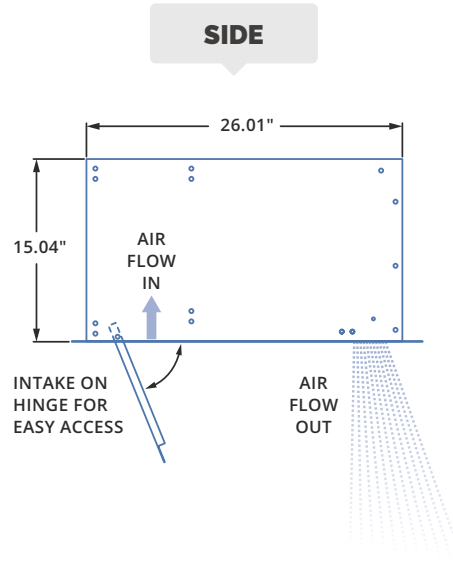
Models	AMP DRAW (Breaker Size)							
	kW	Temp Rise (°F)	208 / 3 / 60			240 / 3 / 60		
			Circuit 1	Circuit 2	SPP	Circuit 1	Circuit 2	SPP
CLD-1-36E / 48E / 60E	10.0	26	29.2A (40)	-	-	25.5A (35)	-	-
CLD-2-72E / 84E / 96E / 108E	20.0	29	30.6A (40)	27.8A (35)	58.3A (80)	19.6A (25)	16.8A (25)	50.9A (70)
CLD-3-108E / 120E / 132E	30.0	32	45.8A (60)	41.6A (60)	87.5A (110)	40.3A (60)	36.1A (50)	76.4A (100)
CLD-4-144E	40.0	36	‡	‡	‡	‡	‡	‡

Models	AMP DRAW (Breaker Size)							
	kW	Temp Rise (°F)	480 / 3 / 60			575 / 3 / 60		
			Circuit 1	Circuit 2	SPP	Circuit 1	Circuit 2	SPP
CLD-1-36E / 48E / 60E	10.0	26	12.7A (20)	-	-	10.6A (15)	-	-
CLD-2-72E / 84E / 96E / 108E	20.0	29	25.5A (35)	-	-	21.3A (30)	-	-
CLD-3-108E / 120E / 132E	30.0	32	38.2A (50)	-	-	31.9A (40)	-	-
CLD-4-144E	40.0	36	26.9A (35)	24.1A (35)	50.9A (70)	42.6A (60)	-	-

# ► CLD & CLD-E | MECHANICAL DETAILS & DRAWINGS

CLD & CLD-E | Mechanical Information Table

MODEL	Overall Width (in.)	Nozzle Width (in.)	Mounting Width (in.)
CLD-1-36 (E)	39	36	37.5
CLD-1-48 (E)	51	48	49.5
CLD-1-60 (E)	63	60	61.5
CLD-2-72 (E)	75.07	72.07	73.57
CLD-2-84 (E)	87.07	84.07	85.57
CLD-2-96 (E)	99.07	96.07	97.57
CLD-3-108 (E)	111.15	108.15	109.65
CLD-3-120 (E)	123.15	120.15	121.65
CLD-3-132 (E)	135.15	132.15	133.65
CLD-4-144 (E)	147.22	144.22	145.72



## ► CLD, CLD-E, CLD-HW/ST | INSTALLATION

### ! IMPORTANT

- ✓ Trained and experienced mechanic / electrician required.
- ✓ **WARNING:**  
Risk of electrical shock, can cause injury or death: Disconnect all remote electrical supplies before servicing.
- ✓ Units must be field wired in accordance with all applicable local, state, provincial and national codes, including wire size and materials.
- ✓ All hardware and brackets must be of sufficient strength to safely support air curtain.

### ✍ NOTE

For every one inch the bottom of the air curtain is mounted above the door header, the back side of the air curtain should be moved away from the wall ¼ inch.

Unit has four 15/32 inch holes for installing one end of 7/16" threaded rods. The other ends of the threaded rods can be attached to the ceiling. Washers and lock washers or locknuts are recommended. Mounting structure should be of sufficient strength to hold air curtain, and hardware (supplied by others) should be of sufficient strength and quality to support the unit safely.



#### STEP 1

Remove intake/discharge grille from bottom of air curtain. If ceiling is already in place, determine where air curtain location will be and cut a rectangular hole in the ceiling. The hole will be 1 inch longer and wider than the bottom length and width of the air curtain without the intake/discharge grille.



#### STEP 2

Suspend air curtain using threaded rods so that the bottom of the unit is centered within the cut out in the ceiling. There will be a 1/2 inch gap around the air curtain. Mount the unit so that the bottom is flush with the ceiling.



#### STEP 3

Attach the intake/discharge grille to the bottom of the air curtain. The grille is larger than the air curtain to cover the gaps between the air curtain and ceiling.