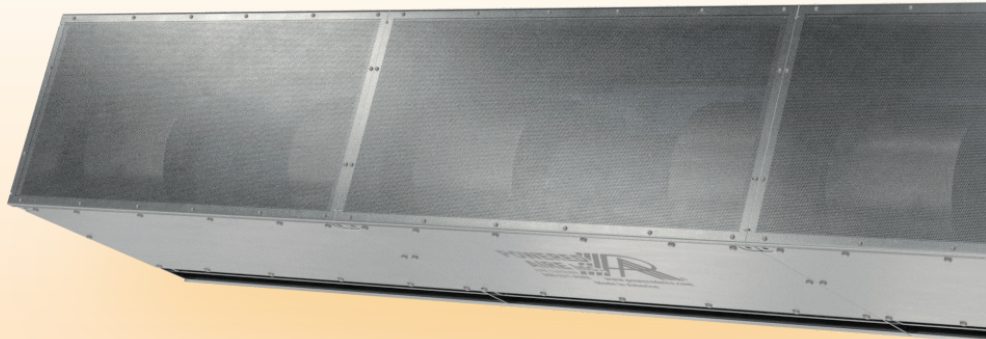




EHD



The Extra High Door (EHD) is used in industrial settings at large door openings. EHD units are manufactured in single increments that can be provided up to 30 ft. wide. The EHD has top and bottom access panels to replace or service motors or blowers without lowering entire unit or bottom half of unit. All industrial units are direct drive, which avoids misalignment of couplers and outboard bearings and eliminates periodic belt replacement. The motor/blower plate comes out as an entire piece and all parts on the outside of the unit are constructed of stainless steel.



OPTIONS

HEATING

Electric.	pg 181
Hot Water.	pg 186
Steam	pg 186
Indirect Gas.	pg 189
Direct Gas.	pg 195

AT A GLANCE

Single Incremental Widths

4' to 20'

Max Installation Height

22'

Heavy Duty Motors

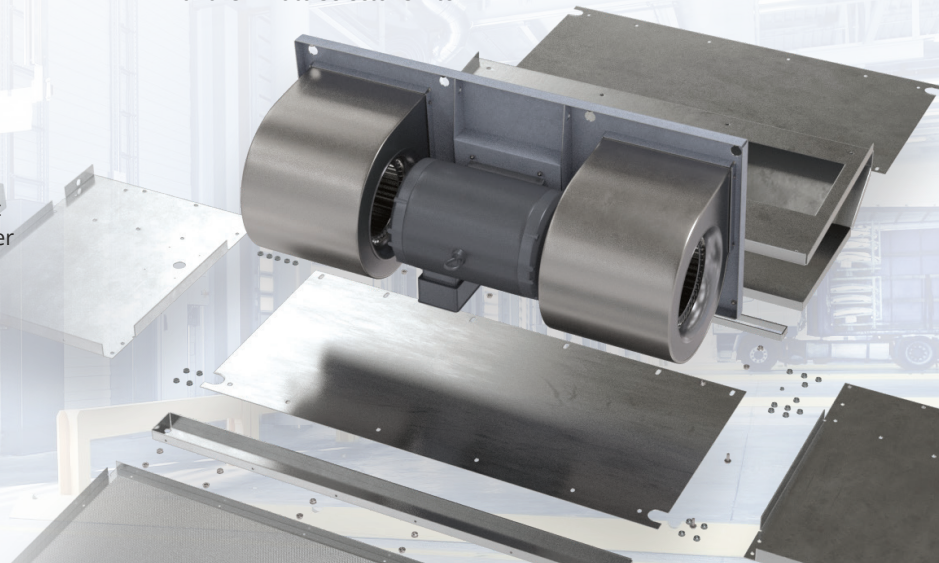
5 HP

KEY DESIGN FEATURES

- Outer cabinet constructed of 18-gauge 304 stainless steel with #3 finish
- 5 HP TEAO (Totally Enclosed Air Over) direct-drive single-speed motor(s)
- High-efficiency discharge plenum with adjustable air foil vane (+/-20°)
- Top and bottom access panels for servicing and removal of motor-blower assembly
- NEMA 12 control panel with factory installed magnetic motor starter, overload relays, and control transformer

RECOMMENDED CONTROLS

- Activation by 24V magnetic door switch
- Toggle disconnect switch
- Hand/Off/Auto selector switch



► EHD | PERFORMANCE

EHD | Performance Table

MODEL	Door Width (ft)	Nozzle Width (in.)	Max. FPM at Nozzle	Max. CFM at Nozzle	Avg. FPM at Nozzle	CFM at Nozzle	Outlet Velocity Uniformity	Number of Motors	Motor HP	Weight (lbs)
EHD-1-48	4	48	6572	6994	5499	6305	95%	1	5	387
EHD-1-60	5	60	6572	9924	4358	7480	94%	1	5	420
EHD-1-72	6	72	6572	12854	5128	9256	94%	1	5	440
EHD-2-96	8	96	6572	15926	4842	12977	95%	2	5	748
EHD-2-108	9	108	6572	17888	4600	13769	94%	2	5	781
EHD-2-120	10	120	6572	19848	4358	15750	94%	2	5	814
EHD-2-132	11	132	6572	21291	4842	16120	95%	2	5	834
EHD-2-144	12	144	6572	23891	4842	19168	95%	2	5	854
EHD-3-156	13	156	6572	25850	4681	20257	94%	3	5	1145
EHD-3-168	14	168	6572	27812	4520	22825	94%	3	5	1180
EHD-3-180	15	180	6572	29772	4358	23004	94%	3	5	1210
EHD-3-192	16	192	6572	30355	4842	23335	95%	3	5	1227
EHD-3-204	17	204	6572	31114	4358	23400	94%	3	5	1248
EHD-3-216	18	216	6572	31850	4600	24570	95%	3	5	1268
EHD-4-228	19	228	6572	37736	4842	28329	94%	4	5	1615
EHD-4-240	20	240	6572	39696	4358	29120	95%	4	5	1645

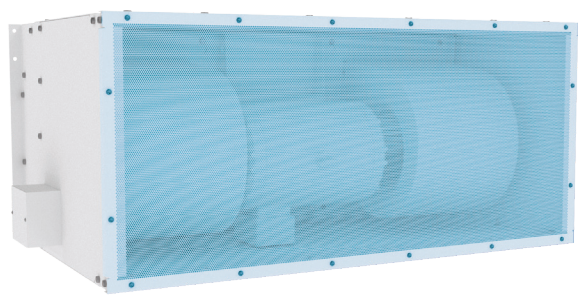
! For a unit over 20 feet long, consult factory.

EHD | Sound Levels

High Speed 71 dBA Measured 10 ft. from unit in a free field based on a 1 motor unit

EHD and EHD HW/ST | Amp Draw and Breaker Options

Model/Number of Motors	208V Amp Draw (Breaker size)	240V Amp Draw (Breaker size)	480V Amp Draw (Breaker size)	575V Amp Draw (Breaker size)
EHD/EHD HWST-1-48, 60, 72	17.0A (25)	15.8A (20)	7.9A (15)	5.6A (15)
EHD/EHD HWST-2-96, 108, 120, 132, 144	34.0A (45)	31.6A (40)	15.8A (20)	11.2A (15)
EHD/EHD HWST-3-156, 168, 180, 192, 204, 216, 228, 240	51.0A (70)	47.4A (60)	23.7A (30)	16.8A (30)
EHD/EHD HWST-4-192, 204, 216, 228, 240	68.0A (90)	63.2A (80)	31.6A (40)	22.4A (30)



Performance Highlight
This unit can also be made with a top air intake. (front air intake shown in image)



EHD-HW



EHD-ST

Scan for complete model information and downloads

888-321-AIRE (2473)
PoweredAire.com



v5.0.0

► EHD-HW/ST | PERFORMANCE

EHD-HW/ST | Heating Information Table

MODEL	Hot Water		Steam		Weight (lbs)
	mbtu / Hour	Temp. Rise (°F)	mbtu / Hour	Temp. Rise (°F)	
EHD-1-48HW/ST	234	34	302	44	463
EHD-1-60HW/ST	278	35	365	46	515
EHD-1-72HW/ST	333	33	434	43	560
EHD-2-96HW/ST	509	36	608	43	895
EHD-2-108HW/ST	555	37	645	43	955
EHD-2-120HW/ST	603	38	730	46	1008
EHD-2-132HW/ST	650	37	852	43	1030
EHD-2-144HW/ST	733	37	852	43	1065
EHD-3-156HW/ST	839	38	972	44	1335
EHD-3-168HW/ST	872	38	1032	45	1390
EHD-3-180HW/ST	881	37	1071	45	1450
EHD-3-192HW/ST	916	36	1094	43	1477



INFO

For additional EHD-HW/ST performance information, reference performance table on page 178.



KEY DESIGN FEATURES

- Outer cabinet constructed of 18-gauge 304 stainless steel with #3 finish
- 5 HP TEAO (Totally Enclosed Air Over) direct-drive single-speed motor(s)
- High-efficiency discharge plenum with adjustable air foil vane (+/-20°)
- Top and bottom access panels for servicing and removal of motor-blower assembly
- NEMA 12 control panel with factory installed magnetic motor starter, overload relays, and control transformer
- Coil made to AHRI Standard 410
- Hot water coil comprised of galvanized steel casing, 5/8" copper tube, aluminum fins, and same end supply/return connections
- Leak tested at 450 psi
- Single length hot water coils up to 14 ft
- Single length steam coils up to 10 ft
- Custom coil selections available (consult factory)

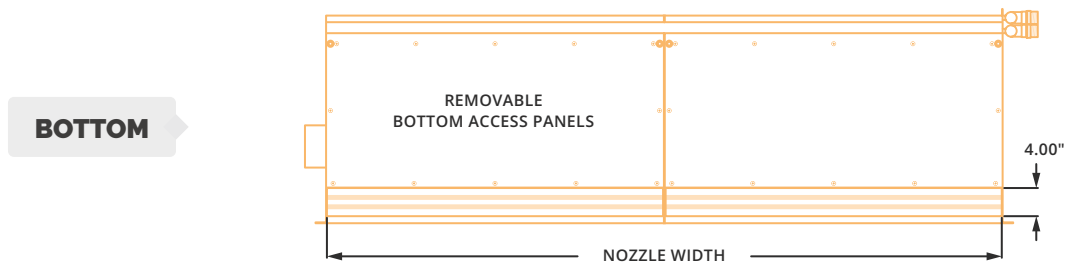
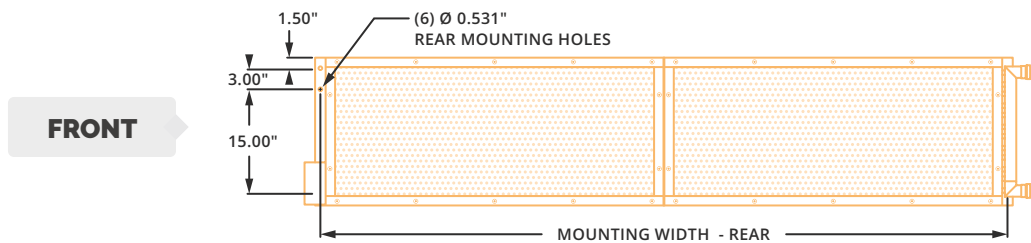
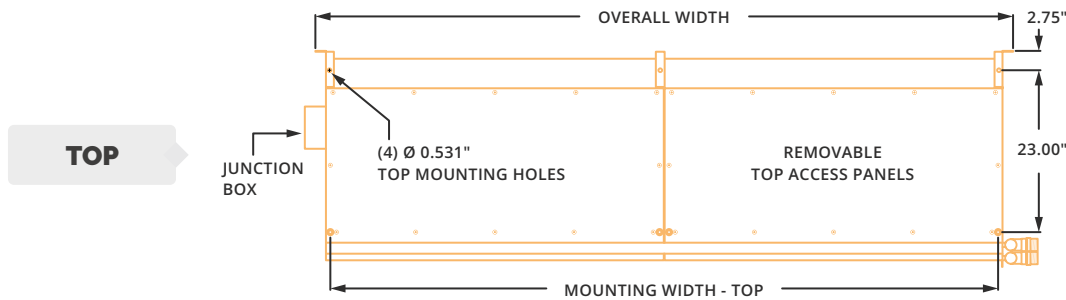
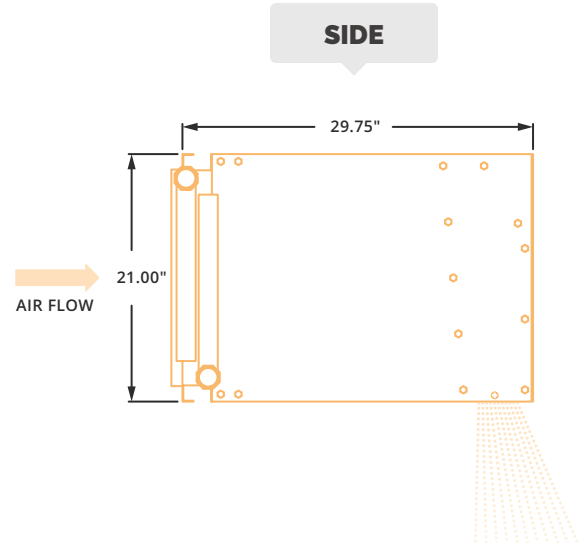
RECOMMENDED CONTROLS

- Activation by 24V magnetic door switch
- Toggle disconnect switch
- Hand/Off/Auto selector switch
- Heat On/Off selector switch
- Digital thermostat
- Hot water or steam control valve with actuator

► EHD-HW/ST | MECHANICAL DETAILS & DRAWINGS

EHD-HW/ST | Mechanical Information Table

MODEL	Overall Width (in.)	Nozzle Width (in.)	Mounting Width Rear (in.)	Mounting Width Top (in.)
EHD-1-48HW/ST	51	48	49.5	47
EHD-1-60HW/ST	63	60	61.5	59
EHD-1-72HW/ST	75	72	73.5	71
EHD-2-96HW/ST	99.12	96.12	97.62	95.12
EHD-2-108HW/ST	111.12	108.12	109.62	107.12
EHD-2-120HW/ST	123.12	120.12	121.62	119.12
EHD-2-132HW/ST	135.12	132.12	133.62	131.12
EHD-2-144HW/ST	147.12	144.12	145.62	143.12
EHD-3-156HW/ST	159.25	156.25	157.75	155.25
EHD-3-168HW/ST	171.25	168.25	169.75	167.25
EHD-3-180HW/ST	183.25	180.25	181.75	179.25
EHD-3-192HW/ST	195.25	192.25	193.75	191.25



▶ EHD-HW/ST | INSTALLATION



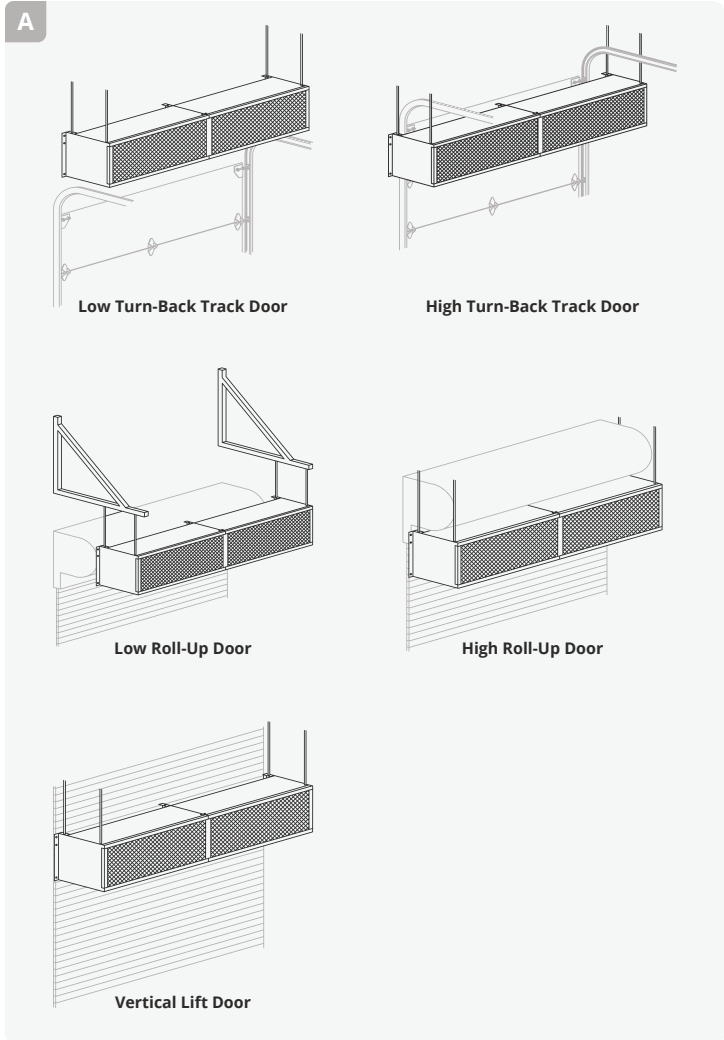
NOTE

The air curtain should be mounted as close to the door header/opening as possible for maximum performance. For every one inch the bottom of the air curtain is mounted above the door header, the back side of the air curtain should be moved away from the wall ¼ inch.

A TOP MOUNT

Unit has four 15/32 inch holes for installing one end of 7/16" threaded rods. The other ends of the threaded rods can be attached to the ceiling. Washers and lock washers or locknuts are recommended. Mounting structure should be of sufficient strength to hold air curtain, and hardware (supplied by others) should be of sufficient strength and quality to support the unit safely.

*Powered Aire does not supply threaded rods.



B WALL MOUNT

Rear flanges of air curtain have six holes, for six 7/16 inch bolts or lags with washers. When wall mounting use all six holes.

