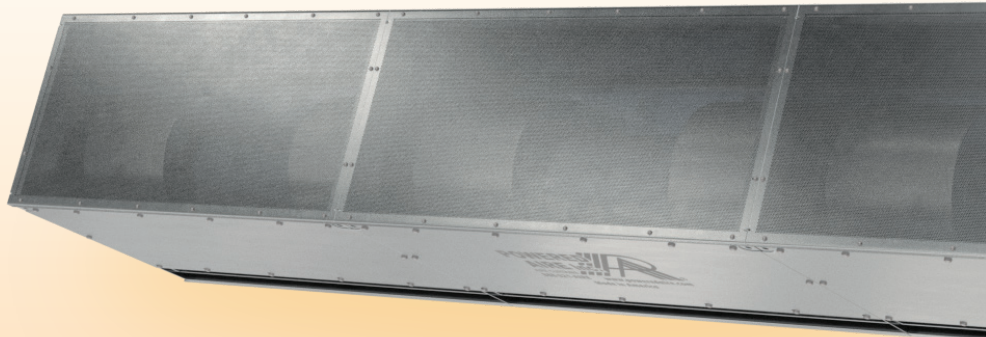




# EHD



The Extra High Door (EHD) is used in industrial settings at large door openings. EHD units are manufactured in single increments that can be provided up to 30 ft. wide. The EHD has top and bottom access panels to replace or service motors or blowers without lowering entire unit or bottom half of unit. All industrial units are direct drive, which avoids misalignment of couplers and outboard bearings and eliminates periodic belt replacement. The motor/blower plate comes out as an entire piece and all parts on the outside of the unit are constructed of stainless steel.



## OPTIONS

### HEATING

Electric. . . . .	pg 181
Hot Water. . . . .	pg 186
Steam . . . . .	pg 186
Indirect Gas. . . . .	pg 189
Direct Gas. . . . .	pg 195

## AT A GLANCE

Single Incremental Widths

4' to 20'

Max Installation Height

22'

Heavy Duty Motors

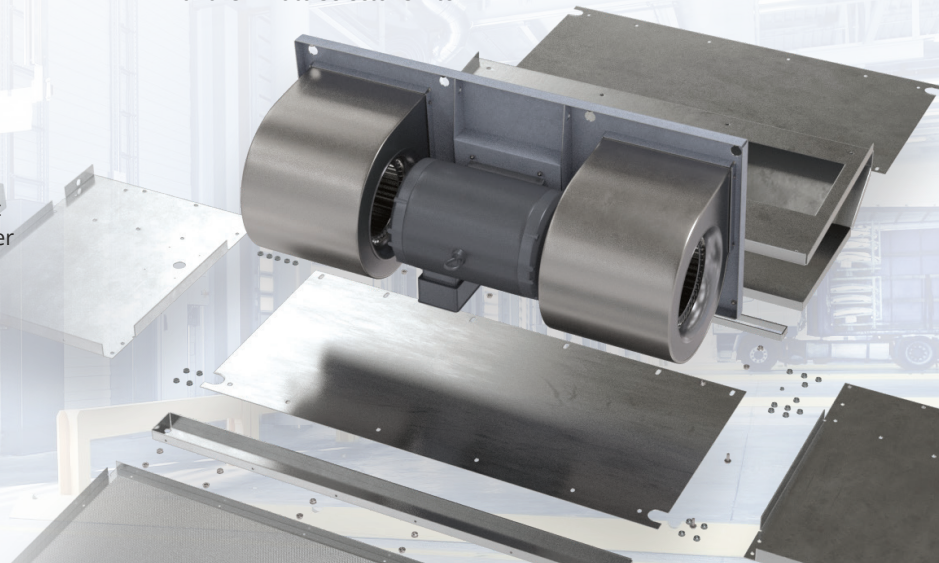
5 HP

### KEY DESIGN FEATURES

- Outer cabinet constructed of 18-gauge 304 stainless steel with #3 finish
- 5 HP TEAO (Totally Enclosed Air Over) direct-drive single-speed motor(s)
- High-efficiency discharge plenum with adjustable air foil vane (+/-20°)
- Top and bottom access panels for servicing and removal of motor-blower assembly
- NEMA 12 control panel with factory installed magnetic motor starter, overload relays, and control transformer

### RECOMMENDED CONTROLS

- Activation by 24V magnetic door switch
- Toggle disconnect switch
- Hand/Off/Auto selector switch



## ► EHD | PERFORMANCE

### EHD | Performance Table

MODEL	Door Width (ft)	Nozzle Width (in.)	Max. FPM at Nozzle	Max. CFM at Nozzle	Avg. FPM at Nozzle	CFM at Nozzle	Outlet Velocity Uniformity	Number of Motors	Motor HP	Weight (lbs)
EHD-1-48	4	48	6572	6994	5499	6305	95%	1	5	387
EHD-1-60	5	60	6572	9924	4358	7480	94%	1	5	420
EHD-1-72	6	72	6572	12854	5128	9256	94%	1	5	440
EHD-2-96	8	96	6572	15926	4842	12977	95%	2	5	748
EHD-2-108	9	108	6572	17888	4600	13769	94%	2	5	781
EHD-2-120	10	120	6572	19848	4358	15750	94%	2	5	814
EHD-2-132	11	132	6572	21291	4842	16120	95%	2	5	834
EHD-2-144	12	144	6572	23891	4842	19168	95%	2	5	854
EHD-3-156	13	156	6572	25850	4681	20257	94%	3	5	1145
EHD-3-168	14	168	6572	27812	4520	22825	94%	3	5	1180
EHD-3-180	15	180	6572	29772	4358	23004	94%	3	5	1210
EHD-3-192	16	192	6572	30355	4842	23335	95%	3	5	1227
EHD-3-204	17	204	6572	31114	4358	23400	94%	3	5	1248
EHD-3-216	18	216	6572	31850	4600	24570	95%	3	5	1268
EHD-4-228	19	228	6572	37736	4842	28329	94%	4	5	1615
EHD-4-240	20	240	6572	39696	4358	29120	95%	4	5	1645

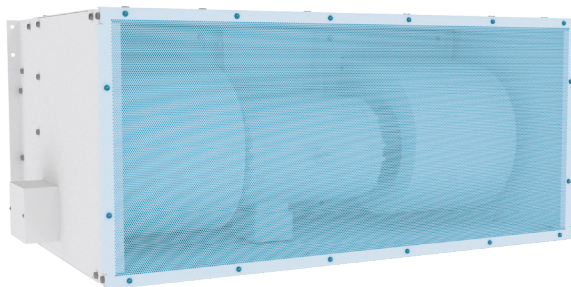
**!** For a unit over 20 feet long, consult factory.

### EHD | Sound Levels

**High Speed**      71 dBA      Measured 10 ft. from unit in a free field based on a 1 motor unit

### EHD and EHD HW/ST | Amp Draw and Breaker Options

Model/Number of Motors	208V Amp Draw (Breaker size)	240V Amp Draw (Breaker size)	480V Amp Draw (Breaker size)	575V Amp Draw (Breaker size)
EHD/EHD HWST-1-48, 60, 72	17.0A (25)	15.8A (20)	7.9A (15)	5.6A (15)
EHD/EHD HWST-2-96, 108, 120, 132, 144	34.0A (45)	31.6A (40)	15.8A (20)	11.2A (15)
EHD/EHD HWST-3-156, 168, 180, 192, 204, 216, 228, 240	51.0A (70)	47.4A (60)	23.7A (30)	16.8A (30)
EHD/EHD HWST-4-192, 204, 216, 228, 240	68.0A (90)	63.2A (80)	31.6A (40)	22.4A (30)



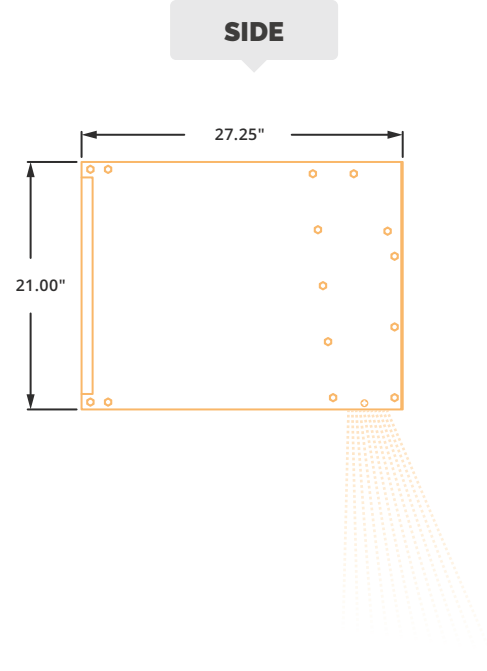
#### Performance Highlight

This unit can also be made with a top air intake. (front air intake shown in image)

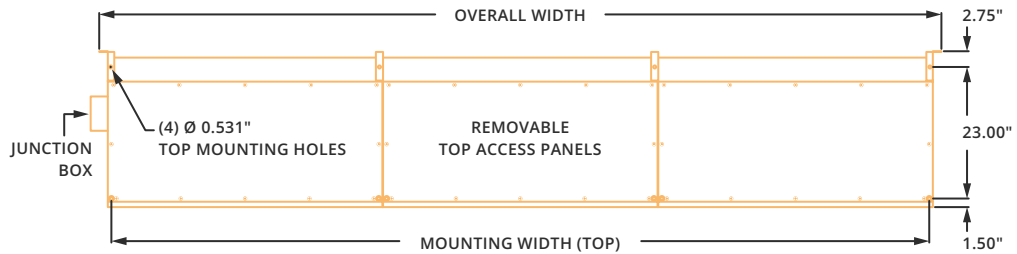
## ► EHD | MECHANICAL DETAILS & DRAWINGS

### EHD | Mechanical Information Table

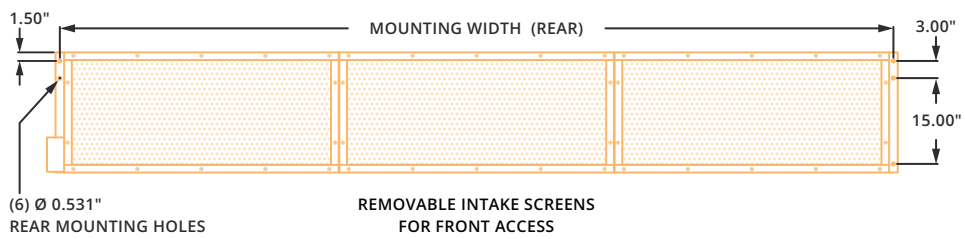
MODEL	Overall Width (in.)	Nozzle Width (in.)	Mounting Width Rear (in.)	Mounting Width Top (in.)
EHD-1-48	51	48	49.5	47
EHD-1-60	63	60	61.5	59
EHD-1-72	75	72	73.5	71
EHD-2-96	99.12	96.12	97.62	95.12
EHD-2-108	111.12	108.12	109.62	107.12
EHD-2-120	123.12	120.12	121.62	119.12
EHD-2-132	135.12	132.12	133.62	131.12
EHD-2-144	147.12	144.12	145.62	143.12
EHD-3-156	159.24	156.24	157.74	155.24
EHD-3-168	171.24	168.24	169.74	167.24
EHD-3-180	183.24	180.24	181.74	179.24
EHD-3-192	195.24	192.24	193.74	191.24
EHD-3-204	207.24	204.24	205.74	203.24
EHD-3-216	219.24	216.24	217.74	215.24
EHD-4-228	231.36	228.36	229.86	227.36
EHD-4-240	243.36	240.36	241.86	239.36



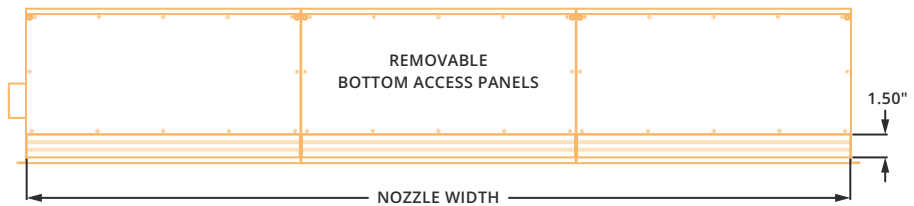
### TOP



### FRONT



### BOTTOM



## ► EHD & EHD-E | INSTALLATION

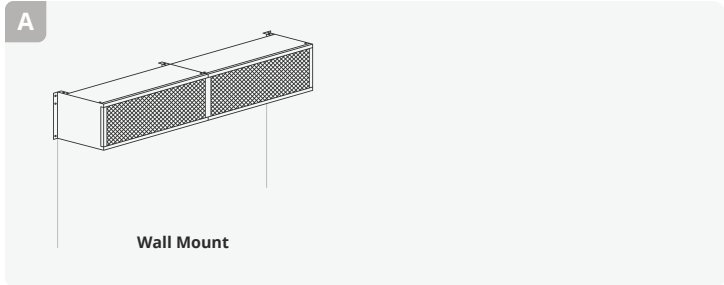


### NOTE

The air curtain should be mounted as close to the door header/opening as possible for maximum performance. For every one inch the bottom of the air curtain is mounted above the door header, the back side of the air curtain should be moved away from the wall ¼ inch.

### A WALL MOUNT

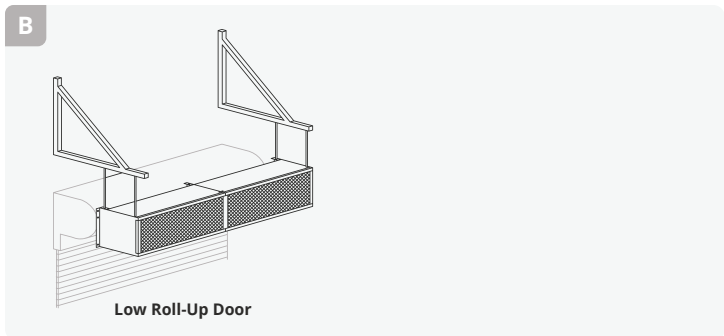
Rear flanges of air curtain have six holes, for six 1/2 inch bolts or lags with washers. When wall mounting use all six holes.



### B MOUNTING BRACKETS

Mounting brackets (also called knee, angle or L-brackets) can be flush to the wall or constructed to account for a projection from the wall. For proper size brackets measure standoff distance from wall to back of where air curtain will be.

If required, angle iron or steel tubing can be attached to the top of the air curtain, typically one foot longer at each end, to reach brackets that are mounted outside of the door system.



### C TOP MOUNT

Unit has four 17/32 holes for installing one end of 1/2 inch threaded rods. The other ends of the threaded rods can be attached to the ceiling. Washers or locknuts are recommended. Mounting structure should be of sufficient strength to hold air curtain, and hardware (supplied by others) should be of sufficient strength and quality to support the unit safely. Additional mounting holes are provided on larger units for buildings where structural support is not adequate for supporting the air curtain from ends only.

\*Powered Aire does not supply threaded rods.

