



ETA-HW/ST



When requesting a quote for a Hot Water/Steam heated air curtain, please provide:

- Specifics of water/steam entering and exiting the air curtain.
- Location for water/steam supplies and returns (both on one side or one each side)

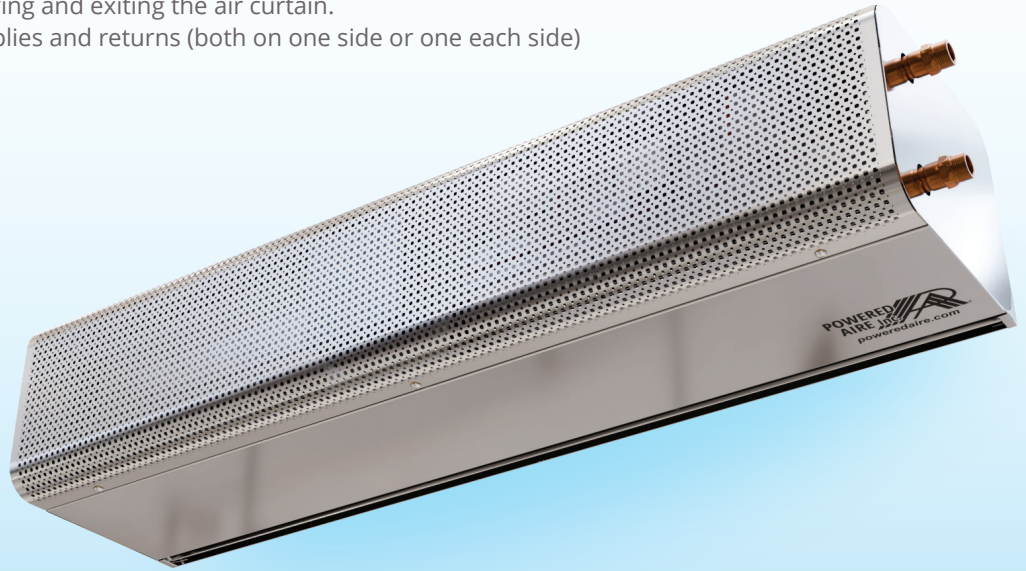
OPTIONS

HEATING

- Unheatedpg 9
- Electricpg 11

FILTER

- 1" Cleanable



AT A GLANCE

Single Incremental Widths

3' to 14'

Max Installation Height

14'

Heavy Duty Motors

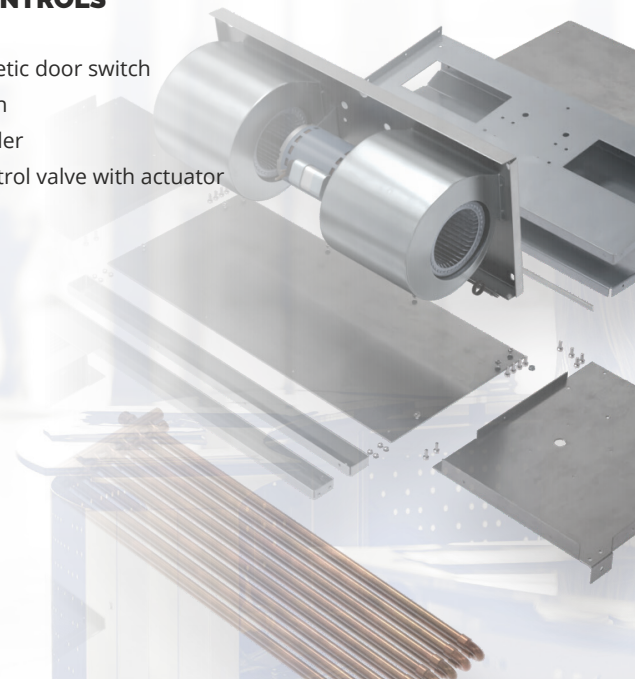
3/4 HP

KEY DESIGN FEATURES

- Outer cabinet available in brushed stainless steel, matte black, or gloss white
- 3/4 HP ODP (Open Drip Proof) direct-drive dual-speed motor(s)
- High-efficiency discharge plenum with adjustable air foil vane (+/-20°)
- Top and bottom access panels for servicing and removal of motor-blower assembly
- NEMA 12 control panel
- Coil made to AHRI Standard 410
- Hot water coil comprised of galvanized steel casing, 5/8" copper tube, aluminum fins, and same end supply/return connections
- Leak tested at 450 psi
- Single length hot water coils up to 14 ft
- Single length steam coils up to 10 ft
- Custom coil selections available (consult factory)

RECOMMENDED CONTROLS & ACCESSORIES

- Activation by 24V magnetic door switch
- Toggle disconnect switch
- SmartTouch Pro controller
- Hot water or steam control valve with actuator
- Filter (washable)



▶ ETA-HW/ST | PERFORMANCE

ETA-HW/ST | Performance Table

| MODEL | Nozzle Width (in.) | | | | | | Hot Water | | Steam | | Weight (lbs) |
|----------------|--------------------|------|------|----------------------------|------------------|----------|-------------|-----------------|-------------|-----------------|--------------|
| | | FPM | CFM | Outlet Velocity Uniformity | Number of Motors | Motor HP | mbtu / Hour | Temp. Rise (°F) | mbtu / Hour | Temp. Rise (°F) | |
| ETA-1-36HW/ST | 36 | 2060 | 1401 | 88% | 1 | 3/4 | 52.2 | 34.2 | 54 | 35.3 | 113 |
| ETA-1-48HW/ST | 48 | 1849 | 1757 | 84% | 1 | 3/4 | 69.8 | 36.5 | 70.4 | 36.8 | 145 |
| ETA-1-60HW/ST | 60 | 1619 | 2007 | 72% | 1 | 3/4 | 78.6 | 35.9 | 84.5 | 38.6 | 180 |
| ETA-2-72HW/ST | 72 | 2060 | 2802 | 88% | 2 | 3/4 | 105.9 | 34.7 | 110.2 | 36.1 | 249 |
| ETA-2-84HW/ST | 84 | 2022 | 3356 | 88% | 2 | 3/4 | 127.3 | 34.8 | 127.5 | 34.8 | 281 |
| ETA-2-96HW/ST | 96 | 1849 | 3514 | 84% | 2 | 3/4 | 138.9 | 36.2 | 143 | 37.3 | 306 |
| ETA-3-108HW/ST | 108 | 2060 | 4203 | 88% | 3 | 3/4 | 163.8 | 35.7 | 166.2 | 36.2 | 365 |
| ETA-3-120HW/ST | 120 | 2033 | 4757 | 88% | 3 | 3/4 | 185.3 | 35.7 | 186.5 | 35.9 | 406 |
| ETA-3-132HW/ST | 132 | 1860 | 4809 | 72% | 3 | 3/4 | 194.2 | 37 | 196.5 | 37.5 | 470 |
| ETA-4-144HW/ST | 144 | 2060 | 5604 | 88% | 4 | 3/4 | 222 | 36.3 | 221.7 | 36.3 | 491 |
| ETA-4-156HW/ST | 156 | 2040 | 6158 | 88% | 4 | 3/4 | 243.6 | 36.3 | 241.8 | 36 | 530 |
| ETA-4-168HW/ST | 168 | 2022 | 6712 | 88% | 4 | 3/4 | 265.2 | 36.2 | 261.8 | 35.7 | 560 |

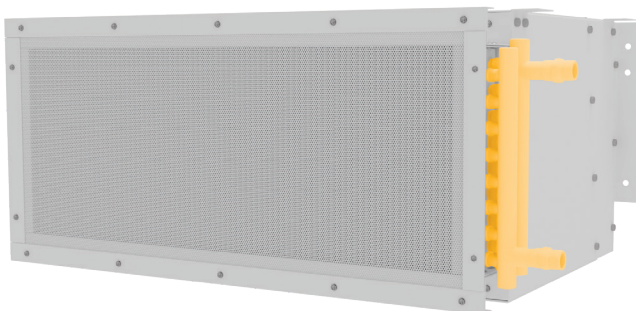
! For other coil capacities consult factory. Heater data based on AMCA licensed values from unheated units.

ETA-HW/ST | Sound Levels

Measured 10 ft. from unit in a free field based on a 1 motor unit 63 dBA

ETA-HW/ST | Amp Draw and Breaker Options - For three phase motors, consult factory

| Motors | 120V Amp Draw (Breaker size) | 208-230V Amp Draw (Breaker size) | 480V Amp Draw (Breaker size) | 575V Amp Draw (Breaker size) |
|---------------------------|------------------------------|----------------------------------|------------------------------|------------------------------|
| ETA-HWST-1-36, 42, 48, 60 | 8.0A (15) | 3.6A (15) | 2.0A (15) | 1.5A (15) |
| ETA-HWST-2-72, 84, 96 | 16.0A (25) | 7.2A (15) | 4.0A (15) | 3.0A (15) |
| ETA-HWST-3-108, 120, 132 | 24.0A (35) | 10.8A (15) | 6.0A (15) | 4.5A (15) |
| ETA-HWST-4-144, 156, 168 | 32.0A (45) | 14.4A (20) | 8.0A (15) | 6.0A (15) |



Performance Highlight

Made-to-order steam or hot water coil mounted to intake of air curtain. Coil consists of 5/8 in. O.D. copper tubes and aluminum fins. Coils certified to ARI standard 410.

▶ ETA-HW/ST | MECHANICAL DETAILS & DRAWINGS

ETA-HW/ST | Mechanical Information Table

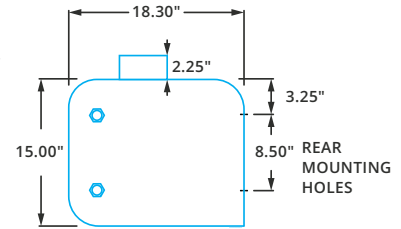
| MODEL | Overall Width (in.) | Nozzle Width (in.) | Mounting Width (in.) |
|----------------|---------------------|--------------------|----------------------|
| ETA-1-36HW/ST | 39 | 36 | 37.5 |
| ETA-1-48HW/ST | 51 | 48 | 49.5 |
| ETA-1-60HW/ST | 63 | 60 | 61.5 |
| ETA-2-72HW/ST | 75.07 | 72.07 | 73.57 |
| ETA-2-84HW/ST | 87.07 | 84.07 | 85.57 |
| ETA-2-96HW/ST | 99.07 | 96.07 | 97.57 |
| ETA-3-108HW/ST | 111.15 | 108.15 | 109.65 |
| ETA-3-120HW/ST | 123.15 | 120.15 | 121.65 |
| ETA-3-132HW/ST | 135.15 | 132.15 | 133.65 |
| ETA-4-144HW/ST | 147.22 | 144.22 | 145.72 |
| ETA-4-156HW/ST | 159.22 | 156.22 | 157.22 |
| ETA-4-168HW/ST | 171.22 | 168.22 | 169.22 |



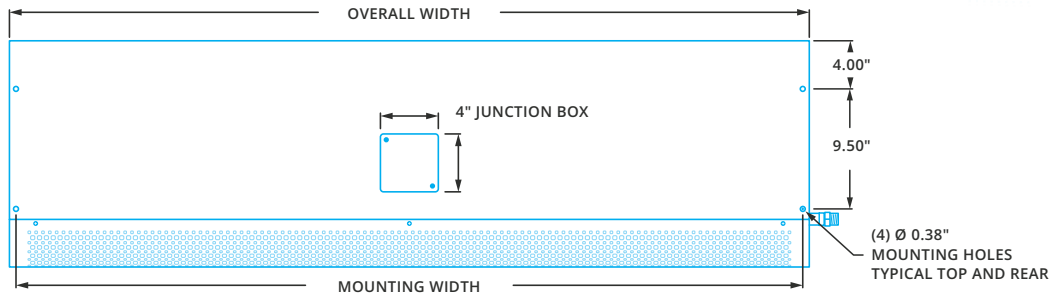
NOTES

1. Installer responsible for structurally sound mounting of the unit.
2. Verify that overall dimensions will fit in the opening.
3. Coil connections shown on right hand side. Can be either right or left. Please specify.
4. Size steam trap (provided by others) by 3 times the manufacturer's recommended size for satisfactory operation.

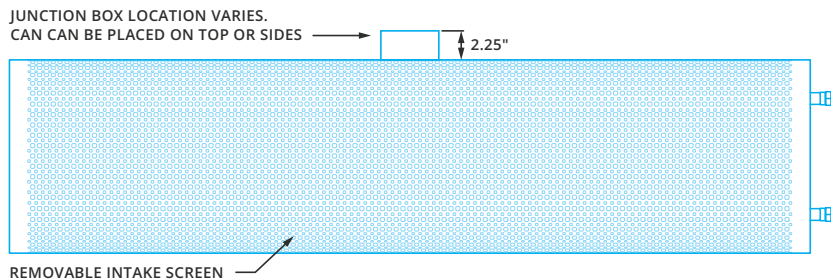
SIDE



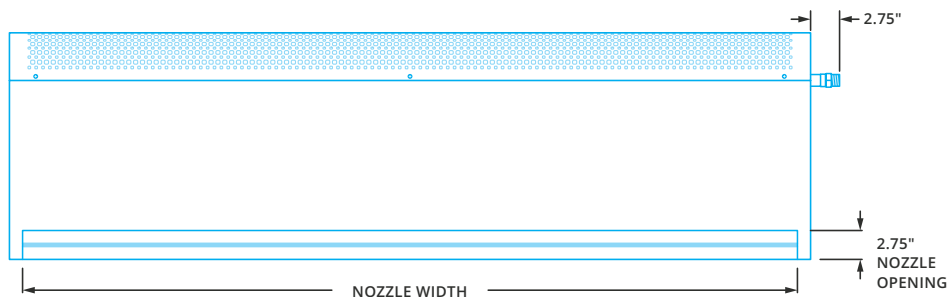
TOP



FRONT



BOTTOM



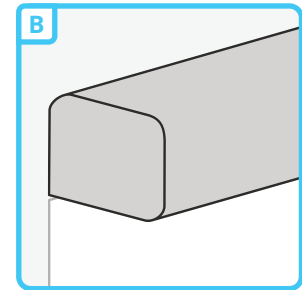
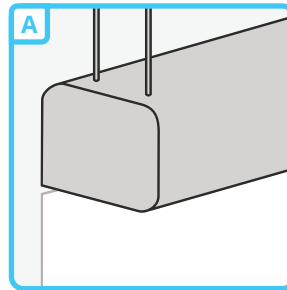
▶ ETA-HW/ST | INSTALLATION

! IMPORTANT

- ✓ **NOTE:** The air curtain should be mounted as close to the door header/opening as possible for maximum performance. For every one inch the bottom of the air curtain is mounted above the door header, the back side of the air curtain should be moved away from the wall ¼ inch.
- ✓ Trained and experienced mechanic / electrician required.
- ✓ **WARNING:** Risk of electrical shock, can cause injury or death: Disconnect all remote electrical supplies before servicing.
- ✓ Units must be field wired in accordance with all applicable local, state, provincial and national codes, including wire size and materials.
- ✓ All hardware and brackets must be of sufficient strength to safely support air curtain.

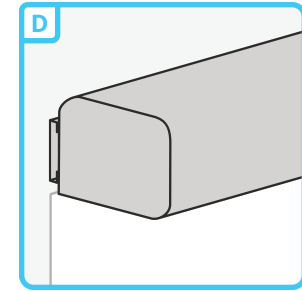
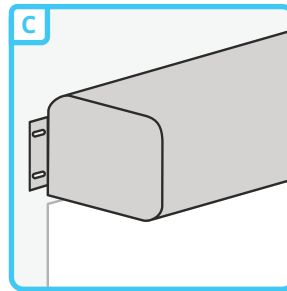
A TOP MOUNT

Unit has four 3/8 – 16 threaded inserts for installing one end of threaded rods. The other ends of the threaded rods can be attached to the ceiling. Threaded rod should not extend more than 3/4 inch into air curtain.



B WALL MOUNT

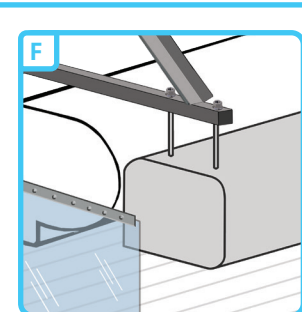
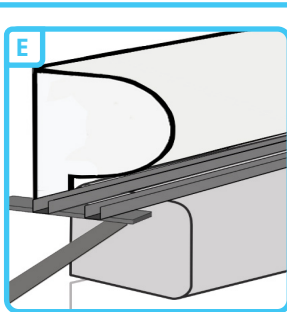
Back side of air curtain has 4 mounting holes capable of accepting four 3/8 mounting bolts or lags, with washers (use these holes only for mounting). Mark and pre-drill mounting surface accurately. A long extension and ratchet will negate the need to remove the motor/blower plate when installing. Mounting bolts or lags of sufficient size and strength should be installed and tightened through the four slots in motor/blower plate.



If motor/blower plate has to be removed, the junction box inside the unit must be removed along with any electrical switches that may be in the way. Remove 7/16 whizlock nuts holding plate in place, and slide plate out, rotating top portion of plate so it comes out first. Remember when installing plate to put bottom of plate in first and push and rotate top in last.

C EXTENSION BRACKETS (WALL MOUNT)

Extension brackets bolt on to the back of the unit, utilizing the 4 original mounting holes, and allowing for external mounting of unit to wall. Brackets have elongated mounting slots that extend the mounting width by 2½ to 3½ inches.



D LP123 BRACKETS

Universal mounting slots are used to lag the bracket to the wall (bolts by others). 3/8" mounting bolts (supplied) are threaded into the holes located in all four corners of the back side of the air curtain, leaving 1/2" of the bolts exposed.

MOUNTING AROUND CANISTER DOORS

There are multiple options for mounting around canister and roll up doors. Angle brackets, Unistrut, and threaded rod (*not shown*) can be used to mount the Air Curtain **E** below the canister.

F When mounting in front of the canister, it is recommended to utilize side baffles to create a seal that prevents outside air from entering. To maximize effectiveness, the barrier should extend to the floor.