



# FAC-E



The two-speed Freezer Aire Curtain™ is used to help solve problems at freezer door openings that result from extreme temperature differences from one side to the other. The Freezer Aire Curtain™ helps to prevent fog from forming when the door opens, moisture and frost on door panels and ice buildup on the door header. The Freezer Aire Curtain™ is constructed of durable stainless steel and operation is by the Aire Controller™.

## OPTIONS

### FILTER

½" Cleanable



## AT A GLANCE

Single Incremental Widths

3' to 12'

Max Installation Height

14'

Heavy Duty Motors

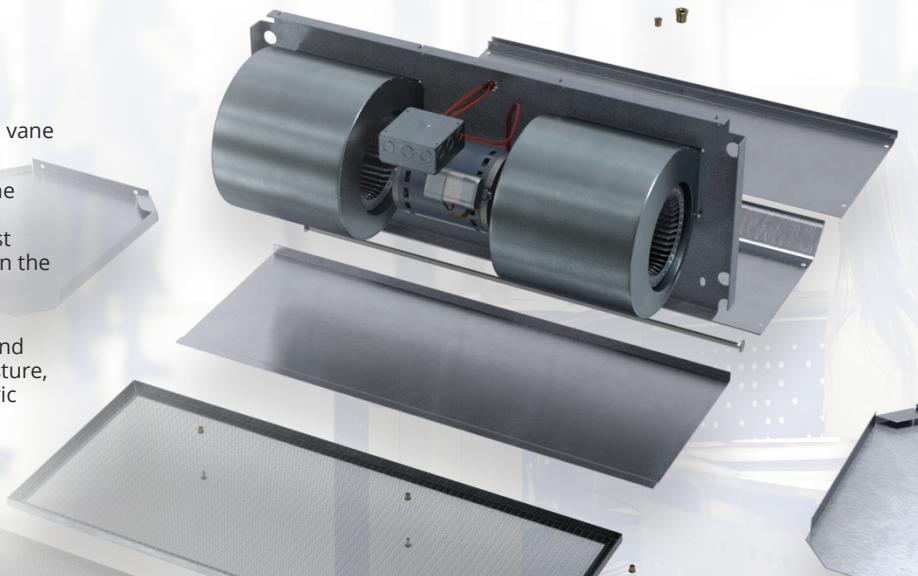
¾ HP

### KEY DESIGN FEATURES

- Stainless steel case is 18 gauge 304 stainless steel in a number three finish.
- Heavy duty ¾ HP motors. 1630 rpm each. Dual speed.
- Galvanized fans.
- Air intake screen is perforated stainless steel with mill grain finish.
- High efficiency discharge plenum with directional air foil vane factory set to facilitate deflection of air stream +/- 20°.
- Heating elements are mounted inside the plenum, on the discharge side of the blowers, to ensure that heat won't affect motor life and the heaters are protected from dust that would accumulate on them if they were mounted on the air intake.
- More than a timer, it's a SmartTouch FAC Controller  
The SmartTouch FAC provides strategically timed heat and fan functions for around-the-clock protection from moisture, frost and ice buildup on hard panel and high-speed fabric freezer doors. Offers preset and adjustable functions.

### RECOMMENDED CONTROLS

- Magnetic door switch for activation
- Dry contacts to interlock with door controller



## ▶ FAC-E | PERFORMANCE

### Freezer Aire Curtain™ | Performance Table

MODEL	Nozzle Width (in.)	Max. FPM at Nozzle	Avg. FPM	Max. CFM	CFM at Nozzle	Outlet Velocity Uniformity	Number of Motors	Motor HP	Weight (lbs)
FAC-1-36E	36	H 4218 L 2837	H 3695 L 2487	H 2899 L 1950	H 2541 L 1710	95%	1	3/4	95
FAC-1-42E	42	H 4218 L 2837	H 3169 L 2133	H 3384 L 2276	H 2532 L 1696	93%	1	3/4	102
FAC-1-48E	48	H 4218 L 2837	H 2771 L 1865	H 3867 L 2601	H 2559 L 1721	92%	1	3/4	109
FAC-1-60E	60	H 4218 L 2837	H 2218 L 1493	H 4374 L 2792	H 2528 L 1703	91%	1	3/4	121
FAC-2-60E	60	H 4218 L 2837	H 3315 L 2231	H 5050 L 3252	H 3812 L 2565	94%	2	3/4	155
FAC-2-72E	72	H 4218 L 2837	H 3696 L 2488	H 5803 L 3903	H 5082 L 3420	95%	2	3/4	177
FAC-2-84E	84	H 4218 L 2837	H 3169 L 2133	H 6766 L 4551	H 5063 L 3382	93%	2	3/4	195
FAC-2-96E	96	H 4218 L 2837	H 2773 L 1866	H 7732 L 5201	H 5081 L 3417	92%	2	3/4	210
FAC-3-108E	108	H 4218 L 2837	H 3702 L 2486	H 8702 L 5853	H 7623 L 5130	95%	3	3/4	255
FAC-3-120E	118	H 4218 L 2837	H 3174 L 2134	H 9668 L 6503	H 7614 L 5127	94%	3	3/4	284
FAC-3-132E	133	H 4218 L 2837	H 2792 L 1885	H 10853 L 7155	H 7589 L 5104	94%	3	3/4	301
FAC-4-144E	145	H 4218 L 2837	H 3696 L 2488	H 11606 L 7806	H 10164 L 6840	95%	4	3/4	354

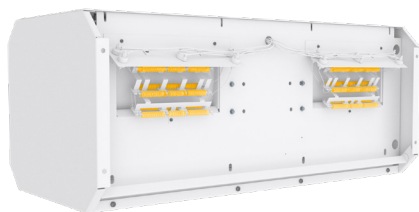
**!** For a unit over 12 feet long, or a non-standard electric heater, consult factory.

### FAC-E | Sound Levels

<b>High Speed</b>	63 dBA	<b>Low Speed</b>	56 dBA	Measured 10 ft. from unit in a free field based on a 1 motor unit
-------------------	--------	------------------	--------	---

### FAC-E | Single Phase Motor Options

<b>Voltages available</b>	120	208 / 230	480	575	For three phase motors, consult factory
<b>Amp draw per motor</b>	8.0	3.6	2.0	1.5	



### Performance Highlight

Heating elements are mounted inside the plenum, on the discharge side of the blowers. Here, heat won't affect motor life and the heaters are protected from dust that would accumulate on them if they were mounted on the air intake.

# FAC-E | ELECTRICAL

**AMP Draw, Circuits & Breaker Size Table**  
**ALL AMP DRAWS LISTED BELOW INCLUDE TOTAL DRAW (MOTOR AND HEATERS INCLUDED)**  
 \* Single Point Power (SPP) includes branch fusing and may require remote control panel.  
 ‡ High amp draws may be prohibitive. Reduced and custom kW available. Contact factory.

Models	AMP DRAW (Breaker Size)							
	kW	Temp Rise (°F)	208 / 1 / 60			240 / 1 / 60		
			Circuit 1	Circuit 2	SPP	Circuit 1	Circuit 2	SPP
FAC-1-36E / 42E / 48E / 60E	14.0	18	-	-	-	32.8A (45)	29.2A (40)	61.9A (80)
	12.0	15	-	-	-	28.6A (40)	25.0A (35)	53.6A (70)
	10.0	13	27.6A (35)	24.0A (35)	51.7A (70)	45.3A (60)	-	-
FAC-2-60E	21.0	18	-	-	-	‡	‡	94.7A (125)
	18.0	15	-	-	-	‡	‡	82.2A (110)
	15.0	13	‡	‡	79.3A (100)	41.7A (60)	28.0A (40)	69.7A (90)
FAC-2-72E / 84E / 96E	28.0	18	-	-	-	‡	‡	‡
	24.0	15	-	-	-	‡	‡	‡
	20.0	13	‡	‡	‡	‡	‡	‡
FAC-3-108E / 120E / 132E	42.0	18	-	-	-	‡	‡	‡
	36.0	15	-	-	-	‡	‡	‡
	30.0	13	‡	‡	‡	‡	‡	‡
FAC-4-144E	56.0	18	-	-	-	‡	‡	‡
	48.0	15	-	-	-	‡	‡	‡
	40.0	13	‡	‡	‡	‡	‡	‡

Models	AMP DRAW (Breaker Size)							
	kW	Temp Rise (°F)	208 / 3 / 60			240 / 3 / 60		
			Circuit 1	Circuit 2	SPP	Circuit 1	Circuit 2	SPP
FAC-1-36E / 42E / 48E / 60E	14.0	18	42.5A (60)	-	-	37.3A (50)	-	-
	12.0	15	36.9A (50)	-	-	32.5A (45)	-	-
	10.0	13	31.4A (40)	-	-	27.7A (35)	-	-
FAC-2-60E	21.0	18	-	-	-	40.9A (60)	16.8A (25)	57.7A (80)
	18.0	15	-	-	-	28.9A (40)	21.6A (30)	50.5A (70)
	15.0	13	41.6A (60)	7.2A (15)	48.8A (70)	43.3A (60)	-	-
FAC-2-72E / 84E / 96E	28.0	18	46.1A (60)	38.9A (50)	84.9A (110)	40.9A (60)	33.7A (45)	74.6A (100)
	24.0	15	40.5A (60)	33.3A (45)	73.8A (100)	36.1A (50)	28.9A (40)	64.9A (90)
	20.0	13	35.0A (45)	27.8A (35)	62.7A (80)	31.3A (40)	24.1A (35)	55.3A (70)
FAC-3-108E / 120E / 132E	42.0	18	‡	‡	‡	‡	‡	‡
	36.0	15	‡	‡	‡	‡	‡	‡
	30.0	13	‡	‡	‡	46.9A (60)	36.1A (50)	83.0A (110)
FAC-4-144E	56.0	18	‡	‡	‡	‡	‡	‡
	48.0	15	‡	‡	‡	‡	‡	‡
	40.0	13	‡	‡	‡	‡	‡	‡

Models	AMP DRAW (Breaker Size)						
	kW	Temp Rise (°F)	480 / 3 / 60			575 / 3 / 60	
			Circuit 1	Circuit 2	SPP	Circuit	
FAC-1-36E / 42E / 48E / 60E	14.0	18	18.8A (25)	-	-	-	
	12.0	15	16.4A (25)	-	-	-	
	10.0	13	14.0A (20)	-	-	11.5A (15)	
FAC-2-60E	21.0	18	-	-	-	-	
	18.0	15	-	-	-	21.1A (30)	
	15.0	13	22.0A (30)	-	-	18.1A (25)	
FAC-2-72E / 84E / 96E	28.0	18	37.7A (50)	-	-	-	
	24.0	15	32.9A (45)	-	-	-	
	20.0	13	28.1A (40)	-	-	23.1A (30)	
FAC-3-108E / 120E / 132E	42.0	18	31.3A (40)	25.3A (35)	56.5A (80)	-	
	36.0	15	27.7A (35)	21.7A (30)	49.3A (70)	40.6A (60)	
	30.0	13	42.1A (60)	-	-	34.6A (45)	
FAC-4-144E	56.0	18	41.7A (60)	33.7A (45)	75.4A (100)	-	
	48.0	15	36.9A (50)	28.9A (40)	65.7A (90)	-	
	40.0	13	32.1A (45)	24.1A (35)	56.1A (80)	46.2A (60)	

## ► FAC-E | MECHANICAL DETAILS & DRAWINGS

### FAC-E | Mechanical Information Table

MODEL	Overall Width (in.)	Nozzle Width (in.)	Mounting Width (in.)
FAC-1-36E	37	36	36.06
FAC-1-42E	43	42	42.06
FAC-1-48E	49	48	48.06
FAC-1-60E	61	60	60.06
FAC-2-60E	61	60	60.06
FAC-2-72E	73	72	72.06
FAC-2-84E	85	84	84.06
FAC-2-96E	97	96	96.06
FAC-3-108E	109	108	108.06
FAC-3-120E	119	118	118.06
FAC-3-132E	134	133	133.06
FAC-4-144E	146	145	145.06

**NOTE**

Powered Aire recommends that the junction box be installed on the same side of the opening as the door motor. The Air Controller™ will be on the opposite side. When placing an order, please include on the purchase order whether the door motor is on the left or right side of the opening.

\*The drawing below is for a door motor on the right side of the opening.

