



MP-HW



MP-ST

MP-HW/ST



The MP HW/ST offers the same features and functions as all MP units (compact size, easy-to-install, low profile) but is available with Hot Water and Steam fittings to connect with buildings using hot water or steam as the primary source of heat. The MP HW/ST meets all the necessary criteria to be used as an exception to vestibules (ANSI/AMCA 220 Standard) in new construction and retrofit applications for offices, restaurants, hospitals, grocery stores and other applications where a vestibule can be eliminated.

OPTIONS

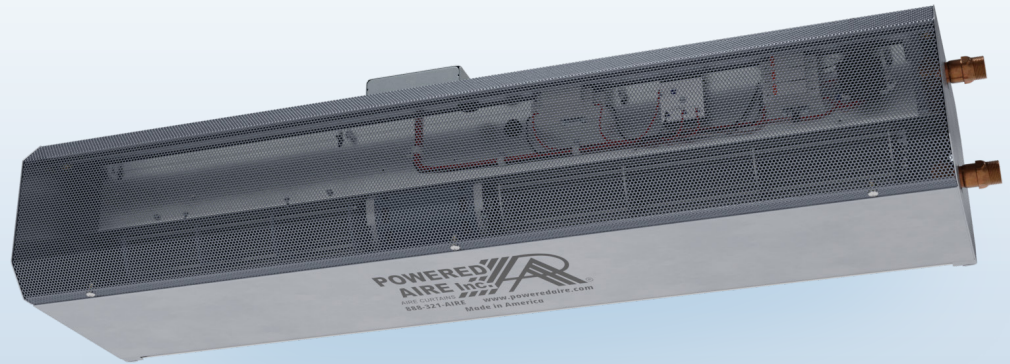
HEATING

Unheatedpg 117

Electricpg 119

FILTER

½" Cleanable (Unheated only)



AT A GLANCE

Single Incremental Widths

30" to 10'

Max Installation Height

10'

Heavy Duty Motors

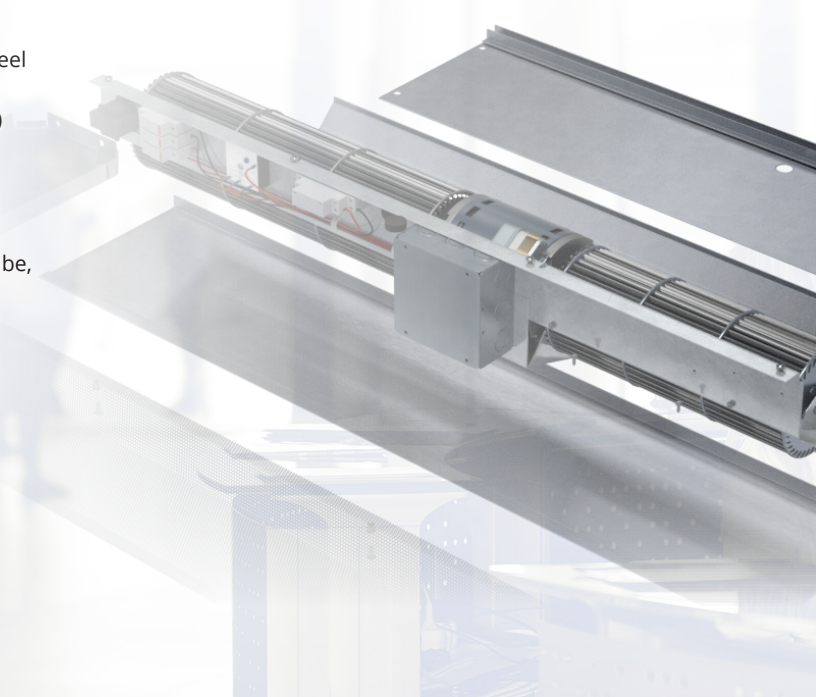
1/5 HP

KEY DESIGN FEATURES

- Low-profile outer cabinet constructed of 18-gauge 304 stainless steel with #3 finish
- 1/5 HP ODP (Open Drip Proof) direct-drive variable-speed motor(s)
- Adjustable air foil vane (+/-20°)
- NEMA 12 control panel
- Coil made to AHRI Standard 410
- Hot water coil comprised of galvanized steel casing, 5/8" copper tube, aluminum fins, and same end supply/return connections
- Leak tested at 450 psi
- Custom coil selections available (consult factory)

RECOMMENDED CONTROLS & ACCESSORIES

- Activation by 24V magnetic door switch
- SmartTouch Pro controller
- Hot water or steam control valve with actuator



▶ MP-HW/ST | PERFORMANCE

MP-HW/ST | Performance Table

MODEL	Nozzle Width (in.)	Max. FPM at Nozzle	Avg. Outlet Velocity (FPM)	Airflow Rate (CFM)	Outlet Velocity Uniformity	Power Rating	Number of Motors	Motor HP	Weight	Hot Water		Steam	
										mbtu / Hour	Temp. Rise (°F)	mbtu / Hour	Temp. Rise (°F)
MP-1-30 HW/ST	29	3050	1335	801	66%	0.2	1	1/5	62	38	35	30	34
MP-1-36 HW/ST	35	3262	1348	984	84%	0.3	1	1/5	78	38	36	39	36
MP-1-42 HW/ST	41	3269	1462	1243	84%	0.3	1	1/5	89	48	36	47	35
MP-1-48 HW/ST	48	3256	1520	1474	85%	0.4	1	1/5	100	58	36	55	35
MP-1-60 HW/ST	59	3218	1529	1865	84%	0.5	1	1/5	125	71	35	70	35
MP-2-72 HW/ST	71	3262	1348	1968	84%	0.6	2	1/5	139	76	36	72	34
MP-2-84 HW/ST	83	3269	1462	2486	84%	0.7	2	1/5	155	94	35	97	36
MP-2-96 HW/ST	95	3256	1520	2948	85%	0.8	2	1/5	169	112	35	113	36
MP-2-108 HW/ST	107	3242	1525	3339	84%	0.8	2	1/5	190	125	35	128	35
MP-2-120 HW/ST	117	3218	1529	3730	84%	0.9	2	1/5	206	146	36	142	35

MP 1-72 HW/DST is not AMCA Certified

MP-1-72 HW/ST	71	3225	1902	2616	62%	1	1/5	139	137	101	35	71	29
---------------	----	------	------	------	-----	---	-----	-----	-----	-----	----	----	----

MP-HW/ST | Velocity Projection

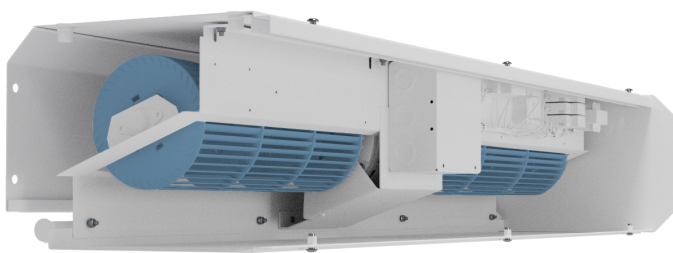
Distance From Nozzle	40"	80"	120"	160"
MP-1-36 Core Velocity (fpm)	1048	784	677	603

MP-HW/ST | Sound Levels

Measured 10 ft. from unit in a free field based on a 1 motor unit 53 dBA

MP-HW/ST | Amp Draw and Breaker Options

Motors	120V Amp Draw (Breaker size)	208-230V Amp Draw (Breaker size)	480V Amp Draw (Breaker size)	575V Amp Draw (Breaker size)
MP-HWST-1-30	3.0A (15)	1.5A (15)	1.1A (15)	0.9A (15)
MP-HWST-1-36, 42, 48, 60, 72	4.4A (15)	2.0A (15)	1.1A (15)	0.9A (15)
MP-HWST-2-72, 84, 96, 108, 120	8.8A (15)	4.0A (15)	2.2A (15)	1.8A (15)



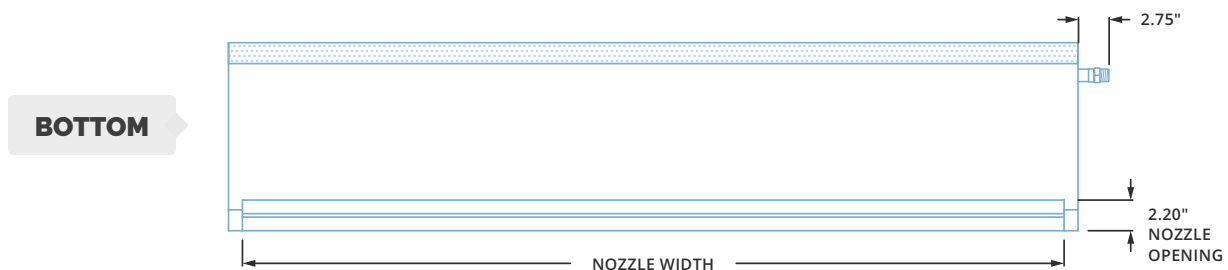
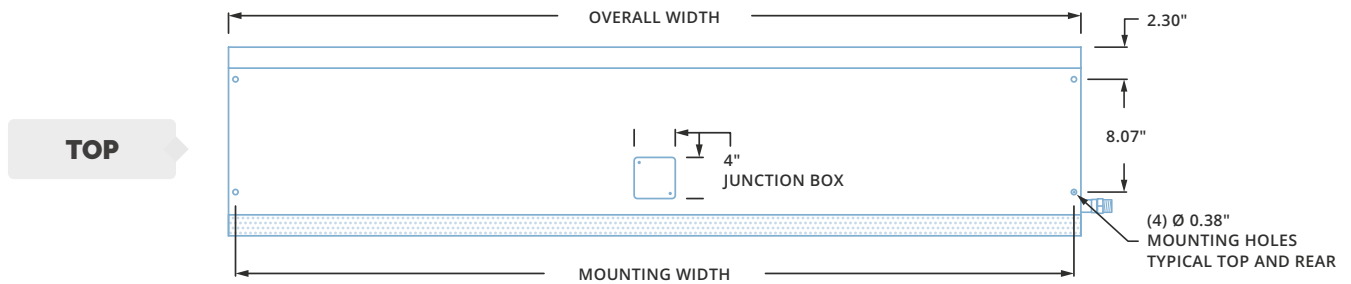
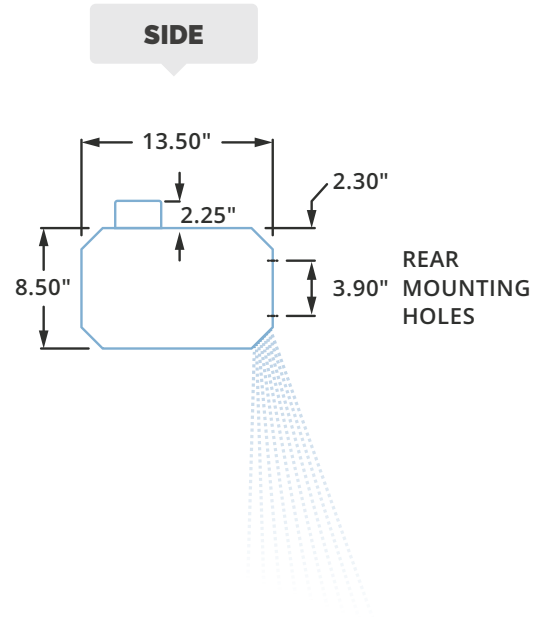
Performance Highlight

This unit can fit a larger diameter tangential blower wheel than competitors' models to increase performance without increasing size. The motor/blower plate comes out of the unit as an entire piece and the electrical connections can be made on the top or sides of the unit for more versatility.

▶ MP-HW/ST | MECHANICAL DETAILS & DRAWINGS

MP-HW/ST | Mechanical Information Table

MODEL	Overall Width (in.)	Mounting Width (in.)	Nozzle Width (in.)
MP-1-30 HW/ST	31	30	29
MP-1-36 HW/ST	37	36	35
MP-1-42 HW/ST	43	42	41
MP-1-48 HW/ST	49	48	47
MP-1-60 HW/ST	61	60	59
MP-1-72 HW/ST	73	72	71
MP-2-72 HW/ST	73	72	71
MP-2-84 HW/ST	85	84	83
MP-2-96 HW/ST	97	96	95
MP-2-108 HW/ST	109	108	107
MP-2-120 HW/ST	119	118	117



▶ MP, MP-E & MP-HW/ST | INSTALLATION

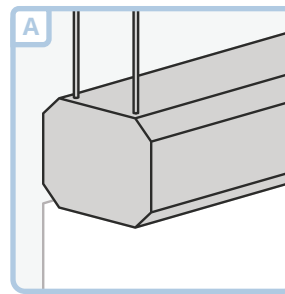


IMPORTANT

- ✓ **NOTE:** The air curtain should be mounted as close to the door header/opening as possible for maximum performance. For every one inch the bottom of the air curtain is mounted above the door header, the back side of the air curtain should be moved away from the wall ¼ inch.
- ✓ Trained and experienced mechanic / electrician required.
- ✓ **WARNING:** Risk of electrical shock, can cause injury or death: Disconnect all remote electrical supplies before servicing.
- ✓ Units must be field wired in accordance with all applicable local, state, provincial and national codes, including wire size and materials.
- ✓ All hardware and brackets must be of sufficient strength to safely support air curtain.

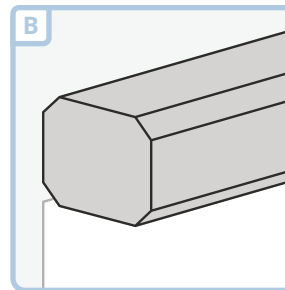
A TOP MOUNT

Unit has four 3/8 - 16 threaded inserts for installing one end of threaded rods. The other ends of the threaded rods can be attached to the ceiling. Threaded rod should not extend more than 3/4 inch into air curtain.



B WALL MOUNT

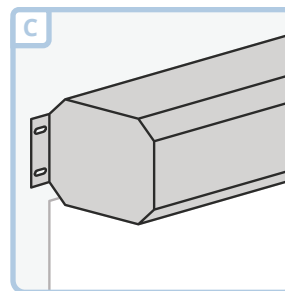
Back side of air curtain has 4 mounting holes capable of accepting four 3/8 mounting bolts or lags, with washers (use these holes only for mounting). Mark and pre-drill mounting surface accurately. A long extension and ratchet will negate the need to remove the motor/blower plate when installing. Mounting bolts or lags of sufficient size and strength should be installed and tightened through the four slots in motor/blower plate.



If motor/blower plate has to be removed, the junction box inside the unit must be removed along with any electrical switches that may be in the way. Remove 7/16 whizlock nuts holding plate in place, and slide plate out, rotating top portion of plate so it comes out first. Remember when installing plate to put bottom of plate in first and push and rotate top in last.

C EXTENSION BRACKETS (WALL MOUNT)

Extension brackets bolt on to the back of the unit, utilizing the 4 original mounting holes, and allowing for external mounting of unit to wall. Brackets have elongated mounting slots that extend the mounting width by 2½ to 3½ inches.



D LP123 BRACKETS

Universal mounting slots are used to lag the bracket to the wall (bolts by others). 3/8" mounting bolts (supplied) are threaded into the holes located in all four corners of the back side of the air curtain, leaving 1/2" of the bolts exposed.

