

## ► CHA-HW/ST | PERFORMANCE

CHA-HW/ST | Performance Table

MODEL	Nozzle Width (in.)	FPM	CFM	Outlet Velocity Uniformity	Number of Motors	Motor HP	Hot Water		Steam		Weight (lbs)
							mbtu / Hour	Temp. Rise (°F)	mbtu / Hour	Temp. Rise (°F)	
CHA-1-36HW/ST	36	2757	1268	91%	1	3/4	54.5	36.3	53	35.4	113
CHA-1-48HW/ST	48	2674	1765	91%	1	3/4	69.7	36.2	70.2	36.5	145
CHA-1-60HW/ST	60	2396	1845	73%	1	3/4	74	36.8	70.6	35.1	180
CHA-2-72HW/ST	72	2757	2356	91%	2	3/4	104.2	34.8	108.7	36.2	249
CHA-2-84HW/ST	84	2708	3033	91%	2	3/4	121.6	35.6	125.9	36.8	281
CHA-2-96HW/ST	96	2674	3530	91%	2	3/4	139	36.1	142.9	37.1	306
CHA-2-108HW/ST	108	2520	3610	73%	2	3/4	135.8	34.5	134.3	34.1	329
CHA-3-108HW/ST	108	2757	3804	91%	3	3/4	161.4	35.9	164.1	36.5	365
CHA-3-120HW/ST	120	2608	4121	73%	3	3/4	178.9	36.3	181.1	36.8	406
CHA-3-132HW/ST	132	2696	4798	91%	3	3/4	196.3	36.7	198	37	470
CHA-4-144HW/ST	144	2757	5072	91%	4	3/4	218.9	36.5	219.1	36.5	491



For a unit over 12 feet long, consult factory. Heater data based on AMCA licensed values from unheated units.

### CHA-HW/ST | Sound Levels

**Normal speed** 63 dBA Measured 10 ft. from unit in a free field based on a 1 motor unit

### CHA-HW/ST | Single Phase Motor Options

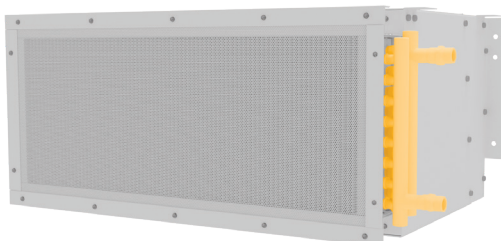
<b>Voltages available</b>	120	208/230	480	575	For three phase motors, consult factory
<b>Amp draw per motor</b>	8.0	3.6	2.0	1.5	



#### NOTE

**When requesting a quote for a Hot Water/Steam heated air curtain, please provide:**

- Specifics of water/steam entering and exiting the air curtain
- Location for water/steam supplies and returns (both on one side or one each side)



#### Performance Highlight

Made-to-order steam or hot water coil mounted to intake of air curtain. Coil consists of 5/8 in. O.D. copper tubes and aluminum fins. Coils certified to ARI standard 410.