



CHS-HW



CHS-ST

3.3.0

# CHS-HW/ST



CHS-HW/ST (hot water or steam) heated air curtains are designed for high traffic retail facilities where employee and customer comfort are critical. The CHS effectively blocks cold outdoor air from entering while providing a heated barrier that helps keep the area by the door warm and free of outside drafts. The CHS-HW/ST model has a gentle airflow and its unique plenum design make it one of the quietest air curtains in the industry.

## When requesting a quote for a Hot Water/Steam heated air curtain, please provide:

- Specifics of water/steam entering and exiting the air curtain.
- Location for water/steam supplies and returns (both on one side or one each side)

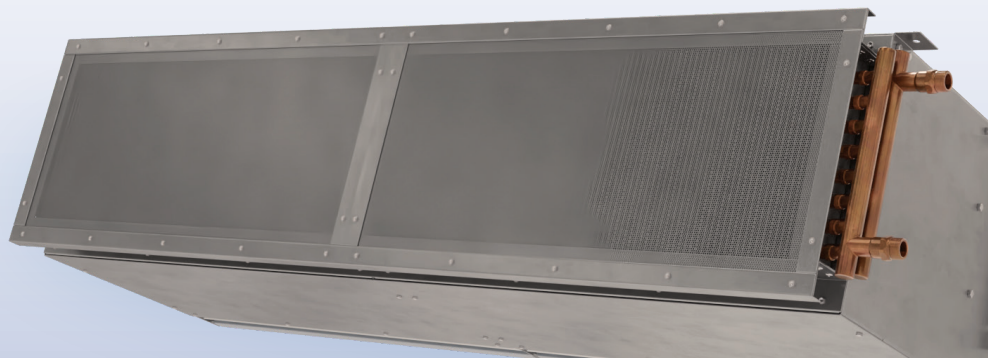
## OPTIONS

### HEATING

Hot Water .....CHS-HW  
Steam .....CHS-ST

### FILTER

1" Cleanable



## AT A GLANCE

Single Incremental Widths

3' to 12'

Max Installation Height

11'

Heavy Duty Motors

½ HP

## KEY DESIGN FEATURES

- 18 gauge 304 stainless steel in a number three finish.
- Heavy duty ½ HP motors. 1075 rpm each. 50/60 cycle. Dual speed.
- Galvanized fans.
- Air intake screen is perforated stainless steel with mill grain finish.
- Top and bottom access panels
- High efficiency discharge plenum ensures that air being discharged fills the entire width and height of the opening. This also lowers the unit's operational sound level.
- Steam or hot water coil mounted to intake of air curtain. Coil consists of 5/8 in. O.D. copper tubes and aluminum fins. Coils certified to ARI standard 410.
- Control panel included

## RECOMMENDED CONTROLS

- ON / OFF switch
- Magnetic door switch for activation
- Built in time delay relay

