



EHD-HW



EHD-ST

Scan for complete
model information
and downloads

888-321-AIRE (2473)
PoweredAire.com



3.3.0

► EHD-HW/ST | PERFORMANCE

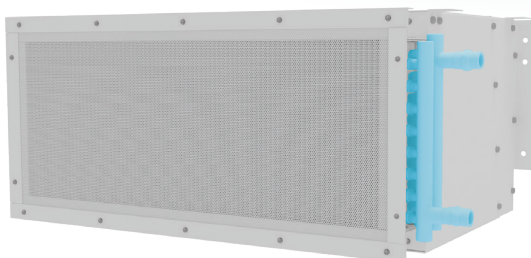
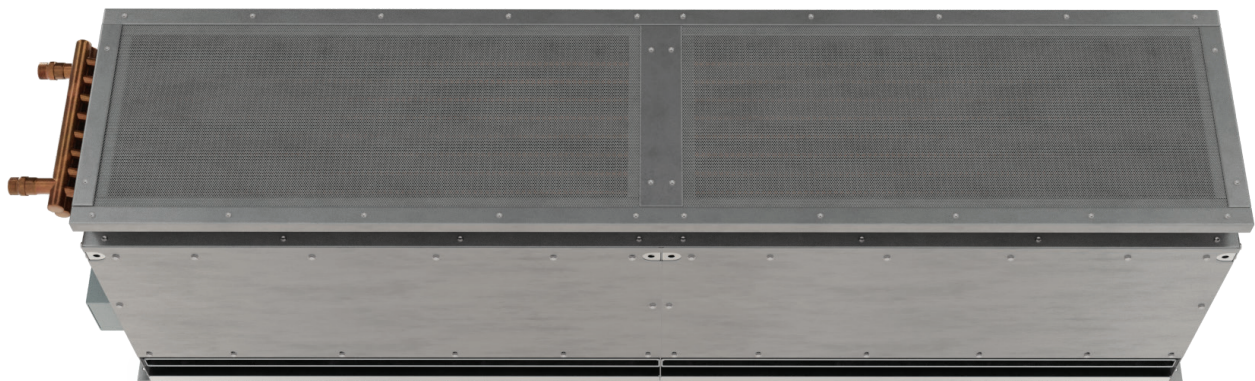
EHD-HW/ST | Heating Information Table

MODEL	Hot Water		Steam		Weight (lbs)
	mbtu / Hour	Temp. Rise (°F)	mbtu / Hour	Temp. Rise (°F)	
EHD-1-48HW/ST	234	34	302	44	463
EHD-1-60HW/ST	278	35	365	46	515
EHD-1-72HW/ST	333	33	434	43	560
EHD-2-96HW/ST	509	36	608	43	895
EHD-2-108HW/ST	555	37	645	43	955
EHD-2-120HW/ST	603	38	730	46	1008
EHD-2-132HW/ST	650	37	852	43	1030
EHD-2-144HW/ST	733	37	852	43	1065
EHD-3-156HW/ST	839	38	972	44	1335
EHD-3-168HW/ST	872	38	1032	45	1390
EHD-3-180HW/ST	881	37	1071	45	1450
EHD-3-192HW/ST	916	36	1094	43	1477



INFO

For additional EHD-HW/ST performance information, reference performance table on page 182.



Performance Highlight

Made-to-order steam or hot water coil mounted to intake of air curtain. Coil consists of 5/8 in. O.D. copper tubes and aluminum fins. Coils certified to ARI standard 410.