



ETA-HW



ETA-ST

3.3.0

ETA-HW/ST



When requesting a quote for a Hot Water/Steam heated air curtain, please provide:

- Specifics of water/steam entering and exiting the air curtain.
- Location for water/steam supplies and returns (both on one side or one each side)

OPTIONS

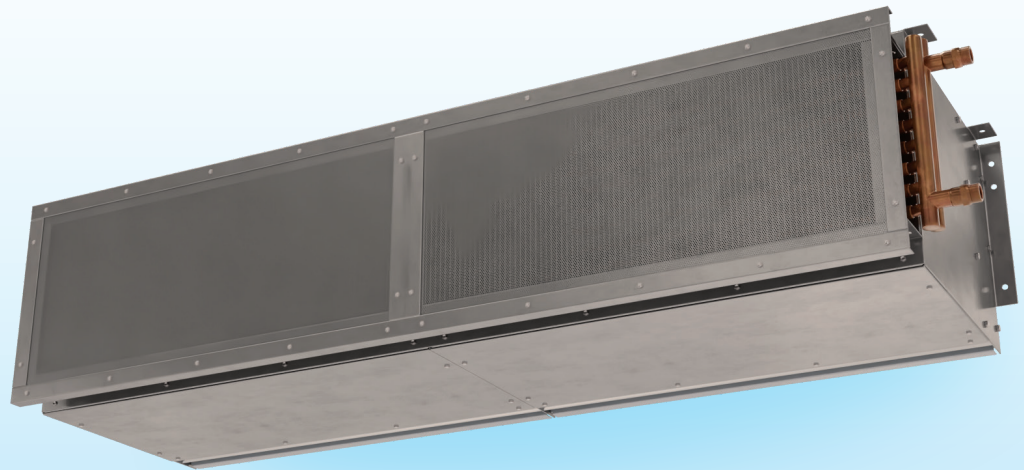
HEATING

Unheatedpg 97

Electric.....pg 99

FILTER

1" Cleanable



AT A GLANCE

Single Incremental Widths

3' to 14'

Max Installation Height

14'

Heavy Duty Motors

¾ HP

KEY DESIGN FEATURES

- Stainless steel case is 18 gauge 304 stainless steel in a number three finish.
- Heavy duty ¾ HP motors. 1630 rpm each.
- High efficiency discharge plenum ensures that air being discharged fills the entire width and height of the opening. This also lowers the operational sound level.
- Made-to-order steam or hot water coil mounted to intake of air curtain. Coil consists of 5/8 in. O.D. copper tubes and aluminum fins. Coils certified to ARI standard 410.
- Control panel included.

RECOMMENDED CONTROLS

- ON / OFF switch
- Magnetic door switch for activation
- Built-in time delay relay

